



Frontline Pierce Saber Mobile Command Unit
Hunterdon County
Job #91995

FEATURES & SPECIFICATIONS

- Pierce Saber 2-door Chassis with Flat Roof and Transverse Storage Compartment
- Cummins L9 450hp 2024 EPA compliant Engine with Allison EVS3000P transmission
- 40' bumper to bumper length
- Four (4) Slide-out modules
- 42' Will-Burt Night Scan mast
- Tech equip: Satellite and LTE connectivity, WiFi 6 access
- WTI HD PTZ camera and six(6) camera perimeter system.
- PowerTech 25kW Water-cooled Diesel Powered Generator
- Delivered in May 2025

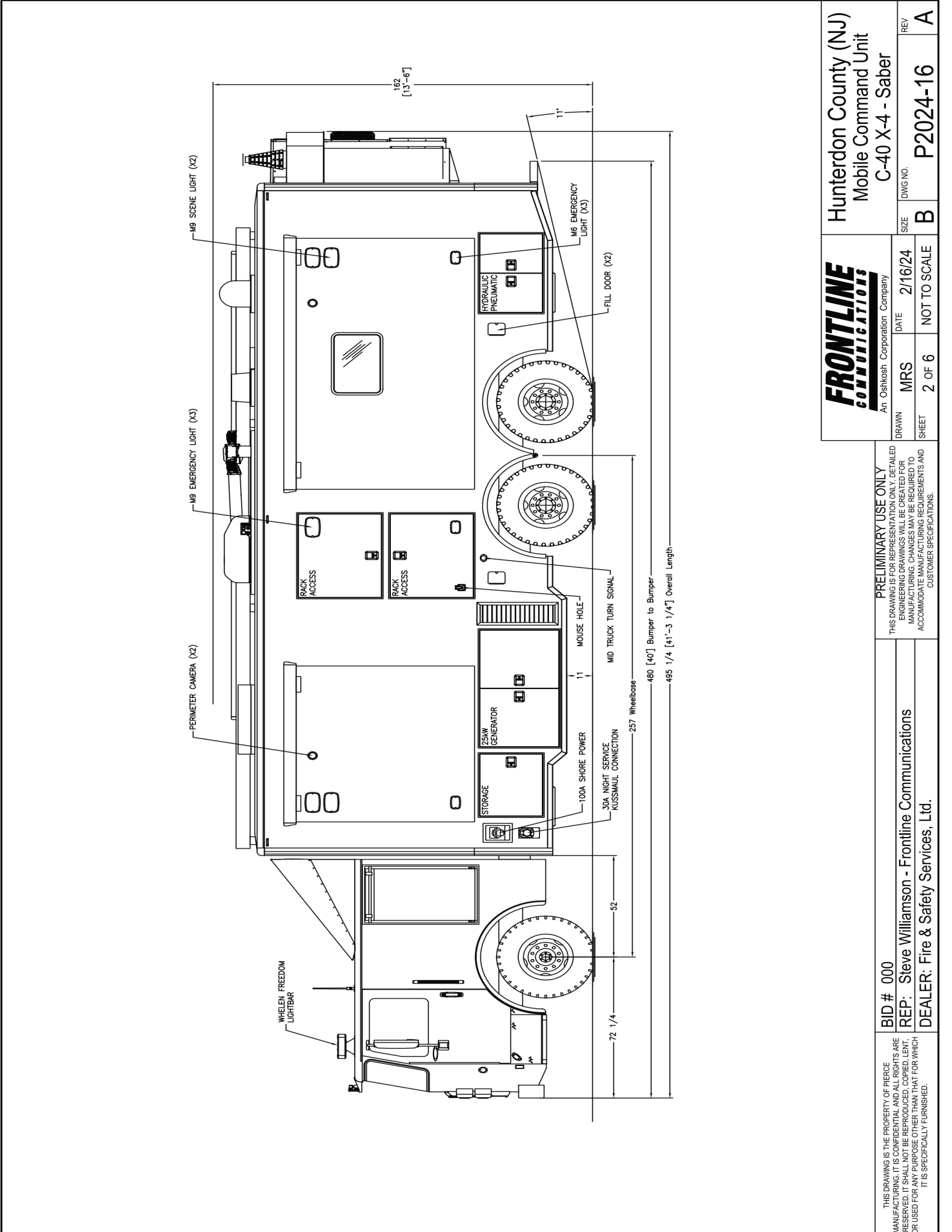
Sold by:
Chirs Vallat



**FIRE & SAFETY
SERVICES**

South Plainfield, NJ
www.f-ss.com • 800-400-8017





THIS DRAWING IS THE PROPERTY OF PIERCE MANUFACTURING. IT IS CONFIDENTIAL AND ALL RIGHTS ARE RESERVED. IT SHALL NOT BE REPRODUCED, COPIED, LENT, OR USED FOR ANY PURPOSE OTHER THAN THAT FOR WHICH IT IS SPECIFICALLY FURNISHED.

BID # 000
REP: Steve Williamson - Frontline Communications
DEALER: Fire & Safety Services, Ltd.

PRELIMINARY USE ONLY
THIS DRAWING IS FOR REPRESENTATION ONLY. DETAILED ENGINEERING DRAWINGS WILL BE CREATED FOR MANUFACTURING. CHANGES MAY BE REQUIRED TO ACCOMMODATE MANUFACTURING REQUIREMENTS AND CUSTOMER SPECIFICATIONS.

FRONTLINE <i>communications</i> An Oshkosh Corporation Company		Hunterdon County (NJ) Mobile Command Unit C-40 X-4 - Saber	
DRAWN	MRS	DATE	2/16/24
SHEET	2 OF 6	NOT TO SCALE	
SIZE	B	DWG NO.	P2024-16
REV			A