



Pierce Enforcer Pumper

East Brunswick Fire Dist. 3/Brookview Fire Co.

Job #37798

FEATURES & SPECIFICATIONS

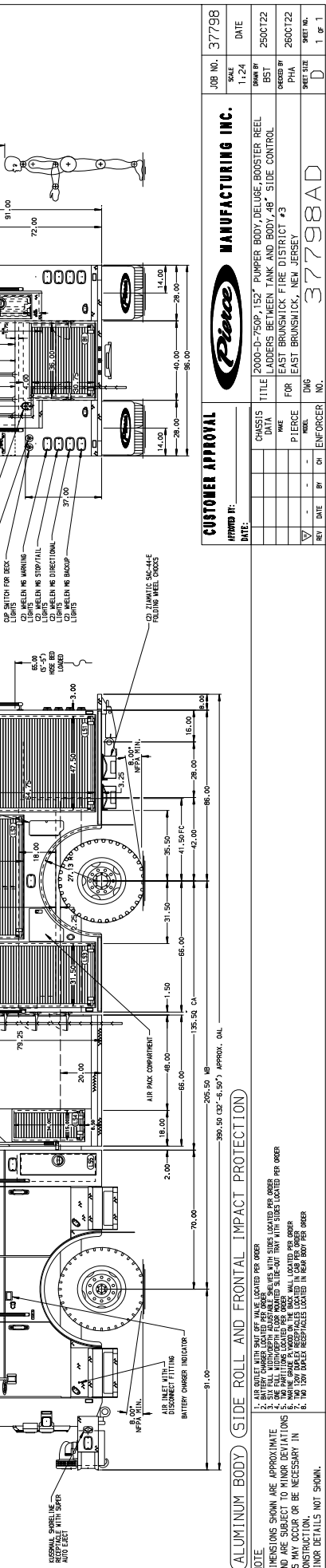
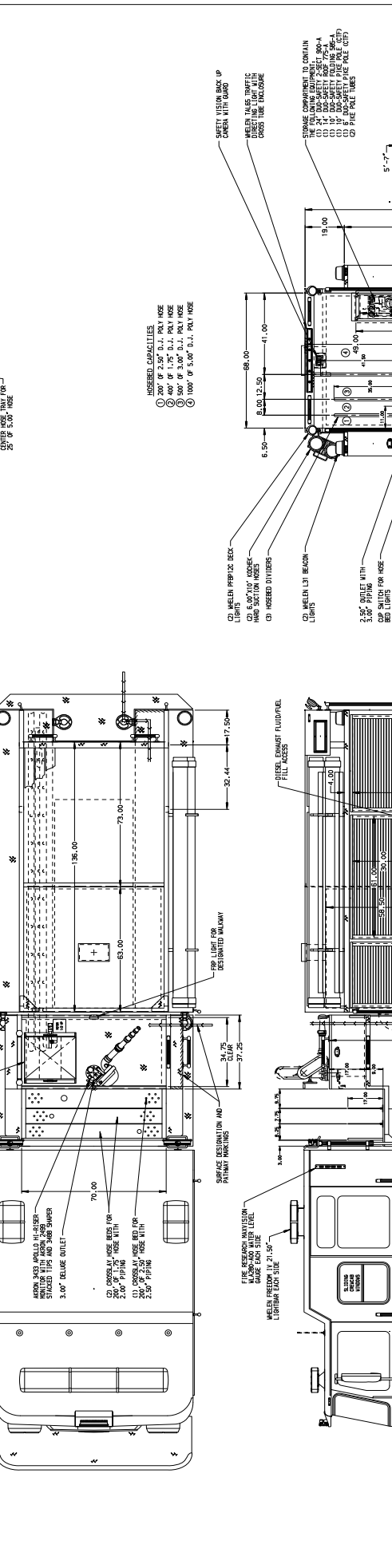
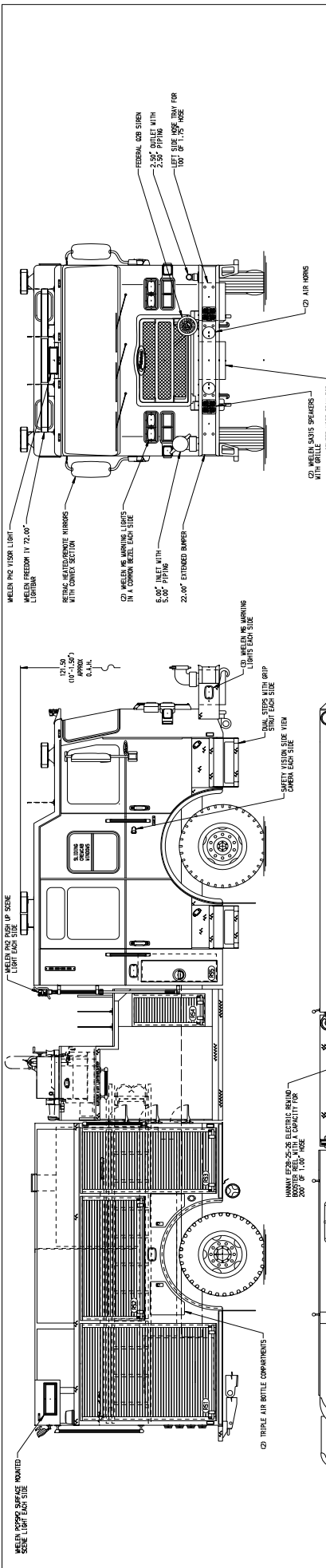
- Pierce Enforcer 70" Chassis with a 10" Raised Roof
- Cummins L9 450hp 2021 EPA compliant Engine
- Allison EVS3000P Automatic Transmission
- TAK-4 Independent Front Suspension
- Waterous CMU 2000 GPM Two Stage Pump
- 750 Gallon Poly Water Tank
- Delivered in September 2023



FIRE & SAFETY SERVICES, LTD.

South Plainfield, NJ

web: www.f-ss.com · phone: 800-400-8017



CUSTOMER APPROVAL		Pierce MANUFACTURING INC.		JOB NO. 37798
APPROVED BY: _____	DATE: _____	SHEET SIZE: D	SHEET NO.: 1	DATE: 11.24
CHASSIS DATA		TITLE		DATE
PIERCE		2000-D-750P-152' PUMPER BODY, DELUGE BOOSTER REEL		2506T22
ENFORCER NO. _____		LADDERS BETWEEN TANK AND BODY, 48" SIDE CONTROL		2606T22
_____		FOR EAST BRUNSWICK FIRE DISTRICT #3		_____
_____		EAST BRUNSWICK, NEW JERSEY		_____

ALUMINUM BODY SIDE ROLL AND FRONTAL IMPACT PROTECTION

NOTE:
 1. AIR BATTLE WITH SHIRT OFF ARE LOCATED PER ORDER
 2. AIR BATTLE WITH SHIRT ON ARE LOCATED PER ORDER
 3. ALL BALL MOUNTS AND HOOKS ARE 1.5" DIA. UNLESS NOTED OTHERWISE
 4. DIMENSIONS SHOWN ARE APPROXIMATE AND ARE SUBJECT TO MINOR DEVIATIONS AS MAY OCCUR OR BE NECESSARY IN CONSTRUCTION. MINOR DETAILS NOT SHOWN.
 5. 100 LB BAKED REPAIRABLE LOCATED IN REAR BODY PER ORDER
 6. 100 LB BAKED REPAIRABLES LOCATED IN REAR BODY PER ORDER