

PUMPER BODY

Long Aluminum 2nd Gen Pumper

CHASSIS

EnForcer Chassis

CHASSIS AXLE, FRONT, CUSTOM

23,000 Lb Dana Axle

AXLE, REAR

31,000 Lb Dana Axle

ENGINE

510 HP Paccar MX13 Engine

TRANSMISSION

Allison 6th Gen, 4000 EVS P

BUMPER

22" Extended Stainless Steel

CAB

7010 EnForcer Cab

BODY

WATER TANK

1000 Gallon New York Style Water Tank

COMPT, PUMPER, REAR

30.75" FF Rear Compt

COMPT, PUMPER, LEFT SIDE

171" RollUp Full Height Front & Rear

COMPT, PUMPER, RIGHT SIDE

171" RollUp Full Height & Depth Front & Rear

FIRE SUPPRESSION PUMPHOUSE

48" Control Zone Side Mount

PUMP

1500 GPM Waterous CXC20

CROSSLAYS, 1.50"

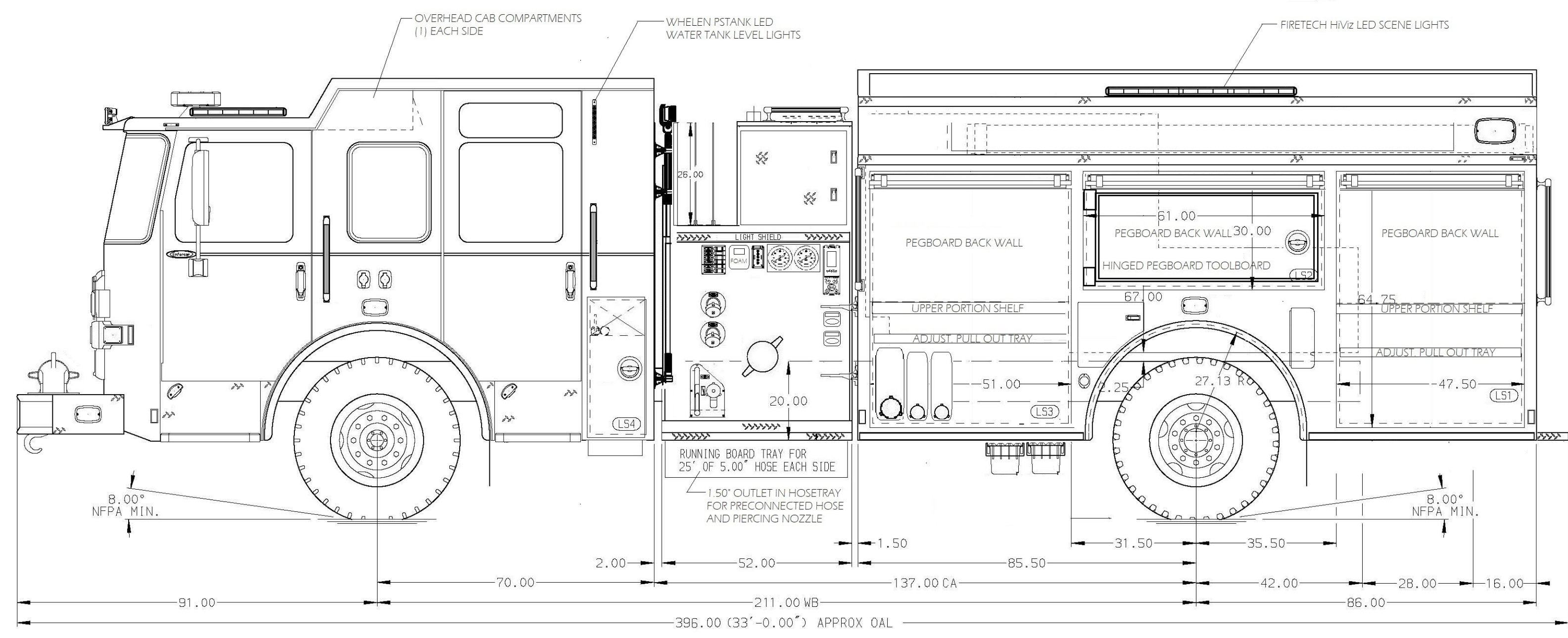
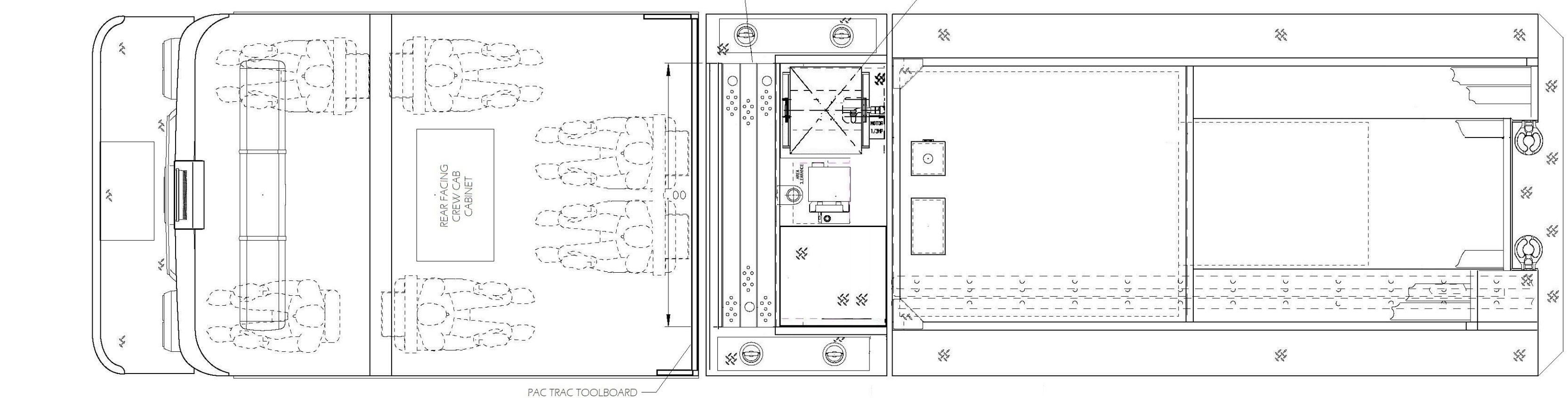
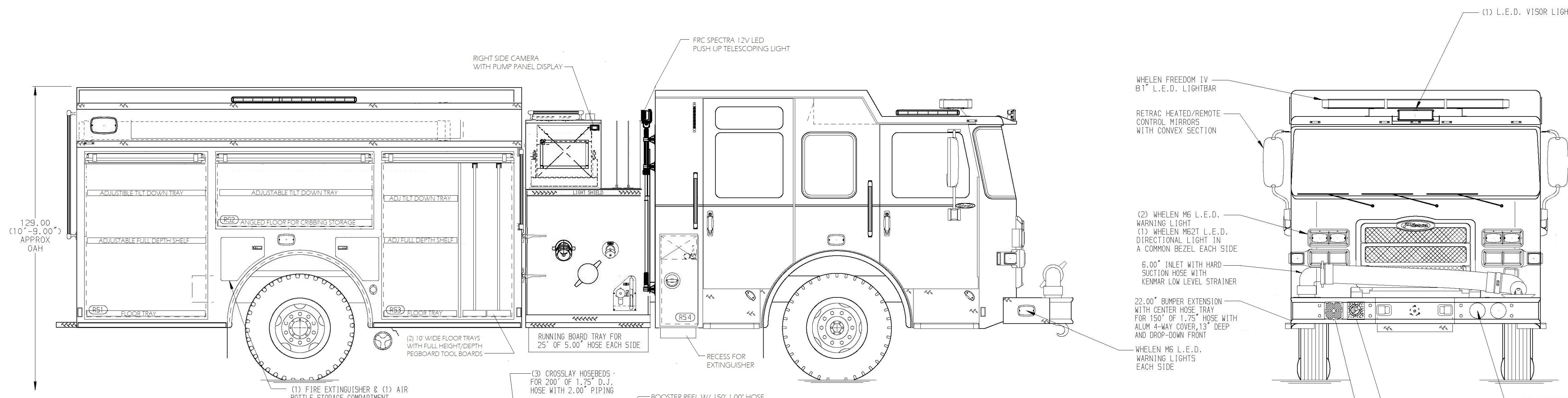
(3) 1.50" Standard Capacity

Foam System

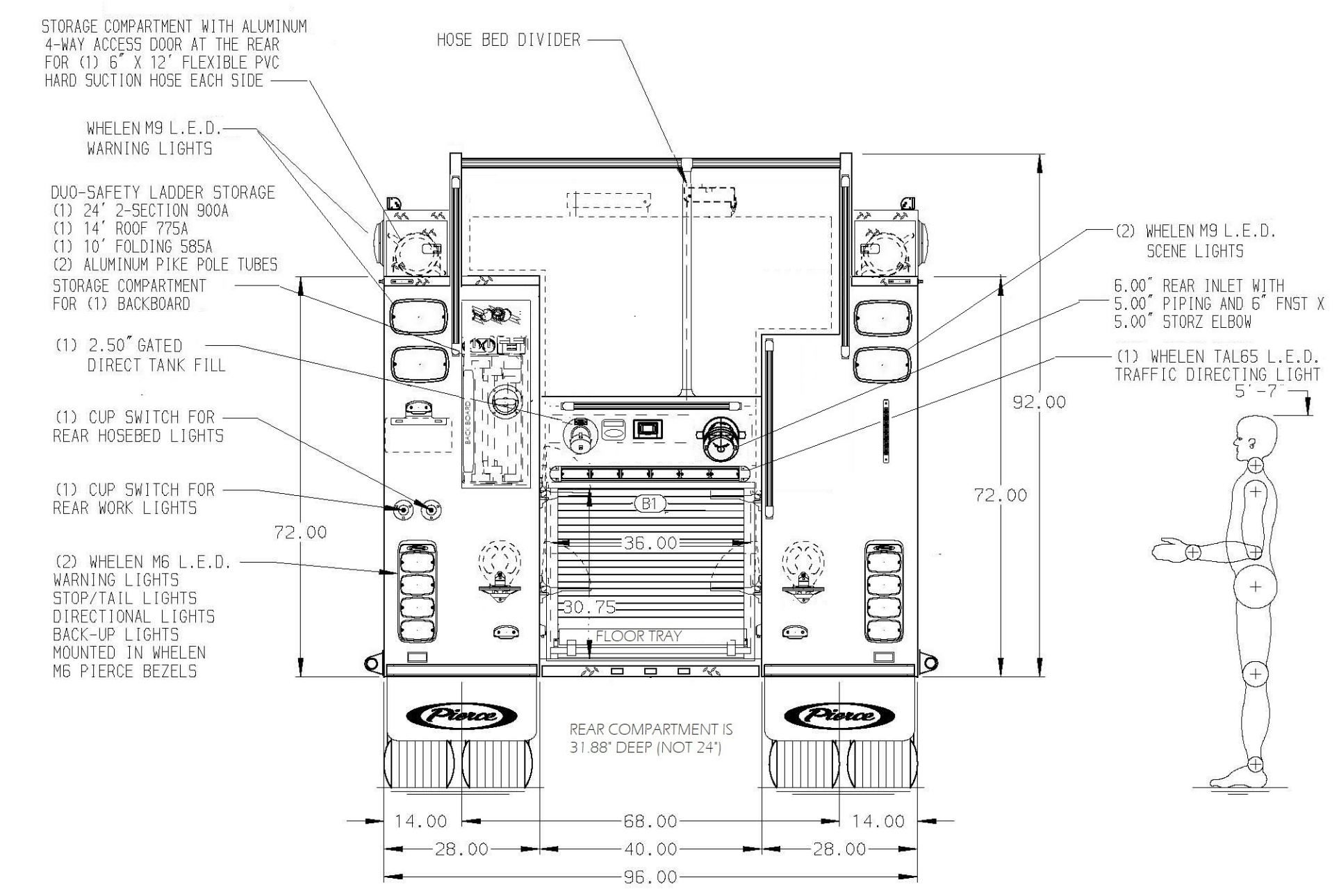
Husky 3 Single Agent Foam System

Foam Cell

20 Gallon Foam Cell



HOSEBED CAPACITY	
BED 1	1500' OF 5.00" D.J. POLY HOSE
BED 2	500' OF 3.00" D.J. POLY HOSE



NOTE
DIMENSIONS SHOWN ARE APPROXIMATE AND ARE SUBJECT TO MINOR DEVIATIONS AS MAY OCCUR OR BE NECESSARY IN CONSTRUCTION. MINOR DETAILS NOT SHOWN.

CUSTOMER APPROVAL					JOB NO.	—
APPROVED BY:					SCALE	1:24
DATE:				TITLE	ENFORCER RESCUE PUMPER - 1500 GPM PUMP, 1000 GAL WATER TANK WITH LOW HOSEBED, HUSKY 3 FOAM SYSTEM, LED SCENE LIGHTING	
			CHASSIS DATA	FOR	TOWNSHIP OF HARMONY PHILLIPSBURG, NEW JERSEY	
B	092023	EET	PIERCE	DWG NO.	PRELIMINARY DRAWING	
A	090923	EET	—		CHECKED BY	—
REV	DATE	BY	CH	EnForcer	SHEET SIZE	D
					SHEET NO.	1 OF 1