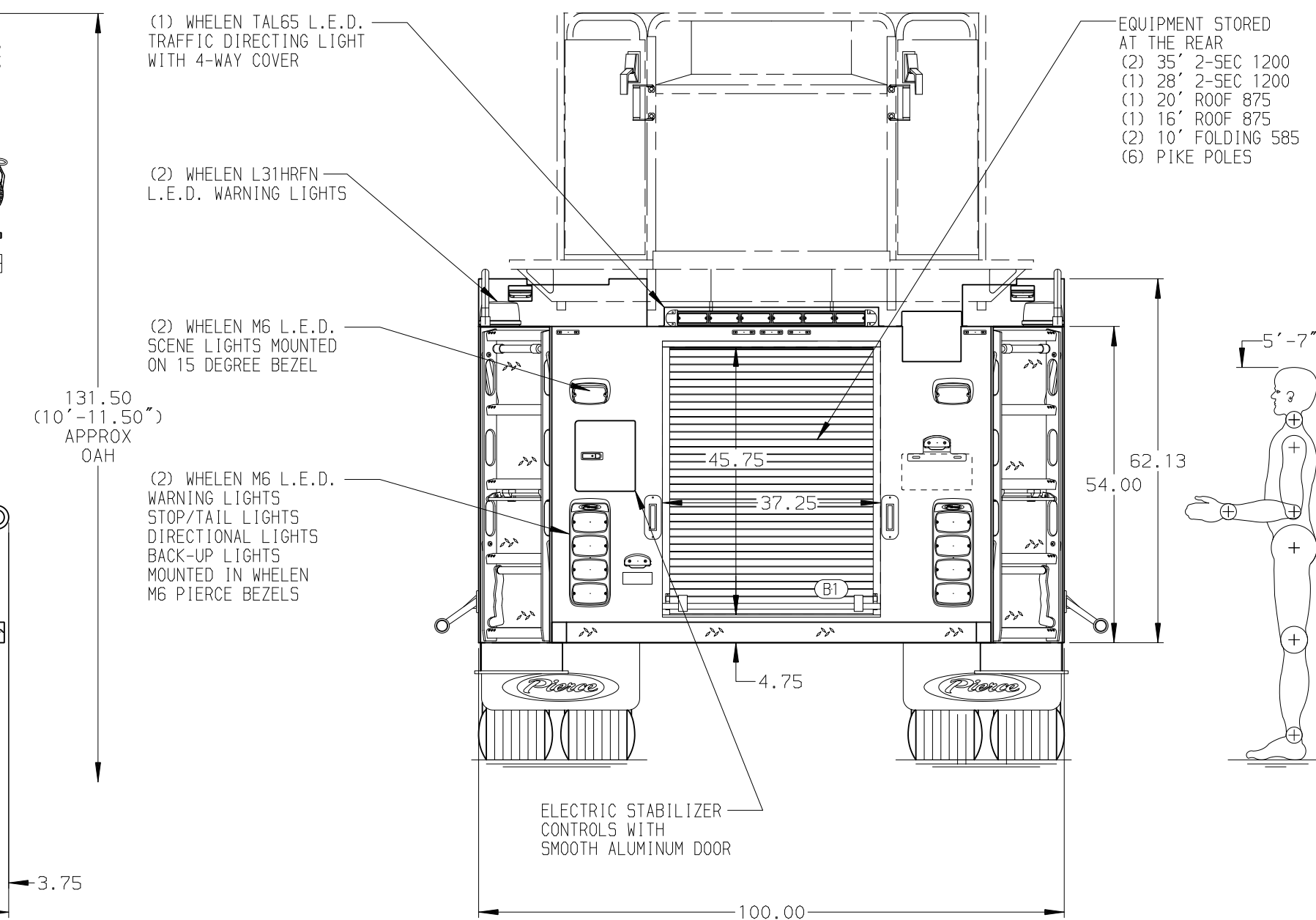
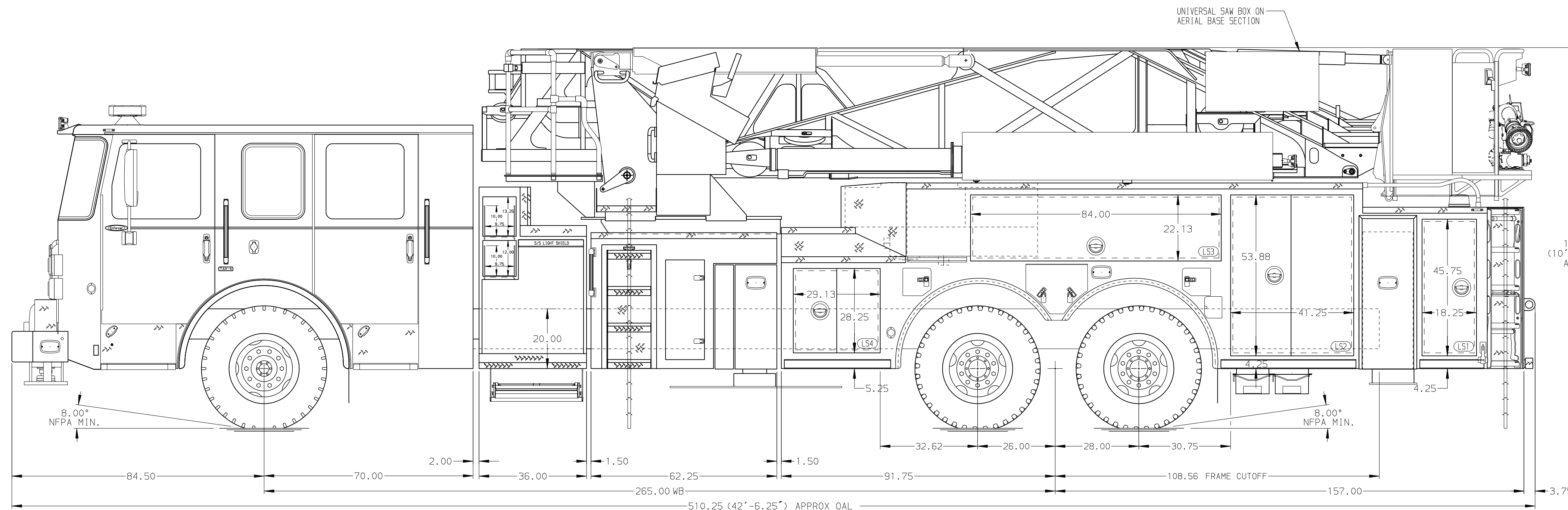
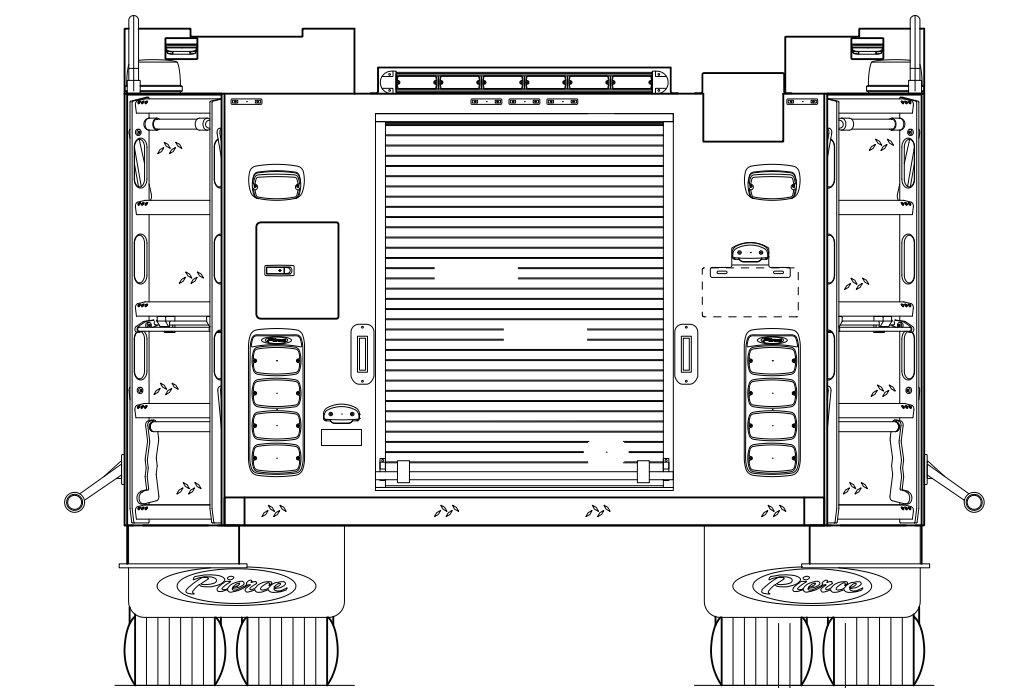
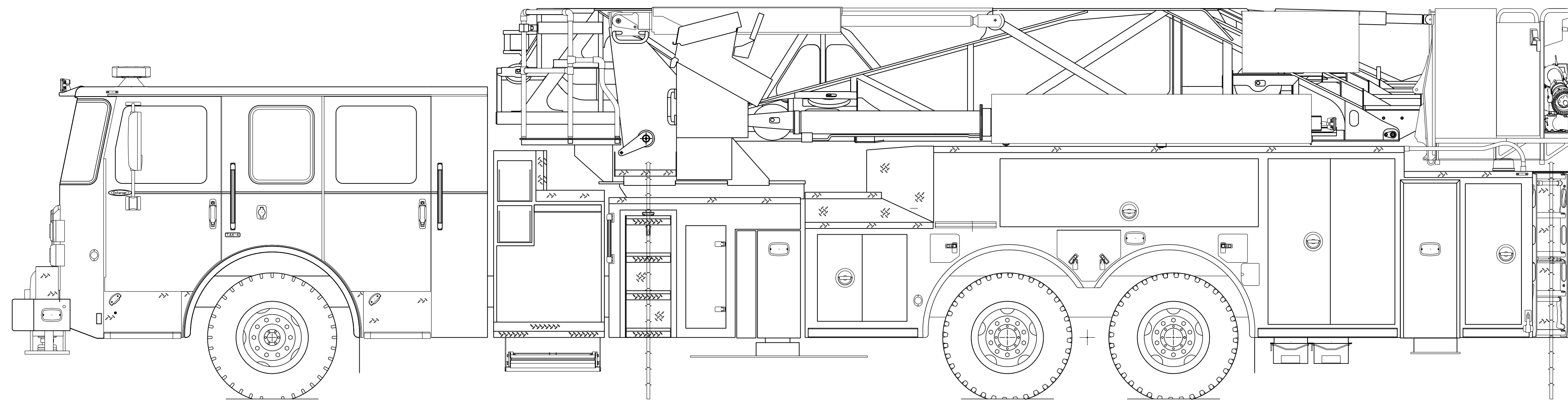
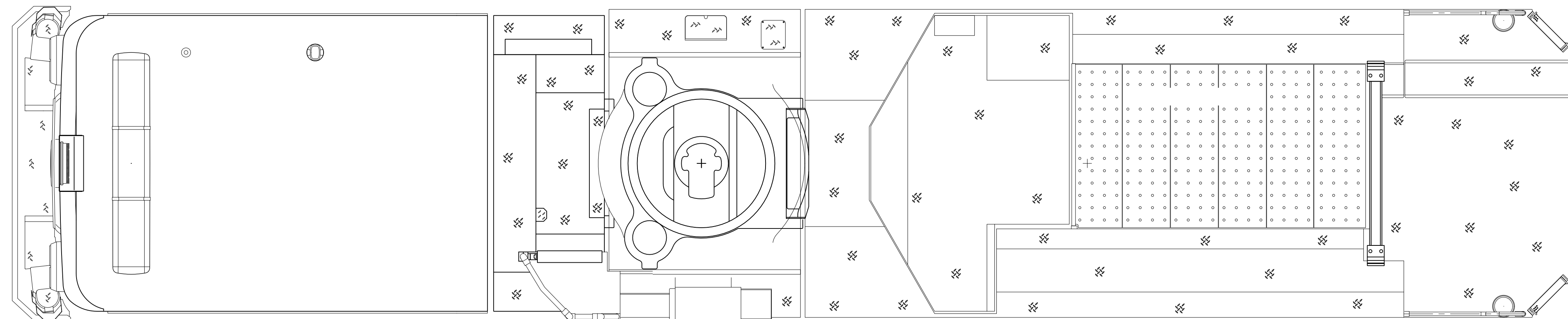
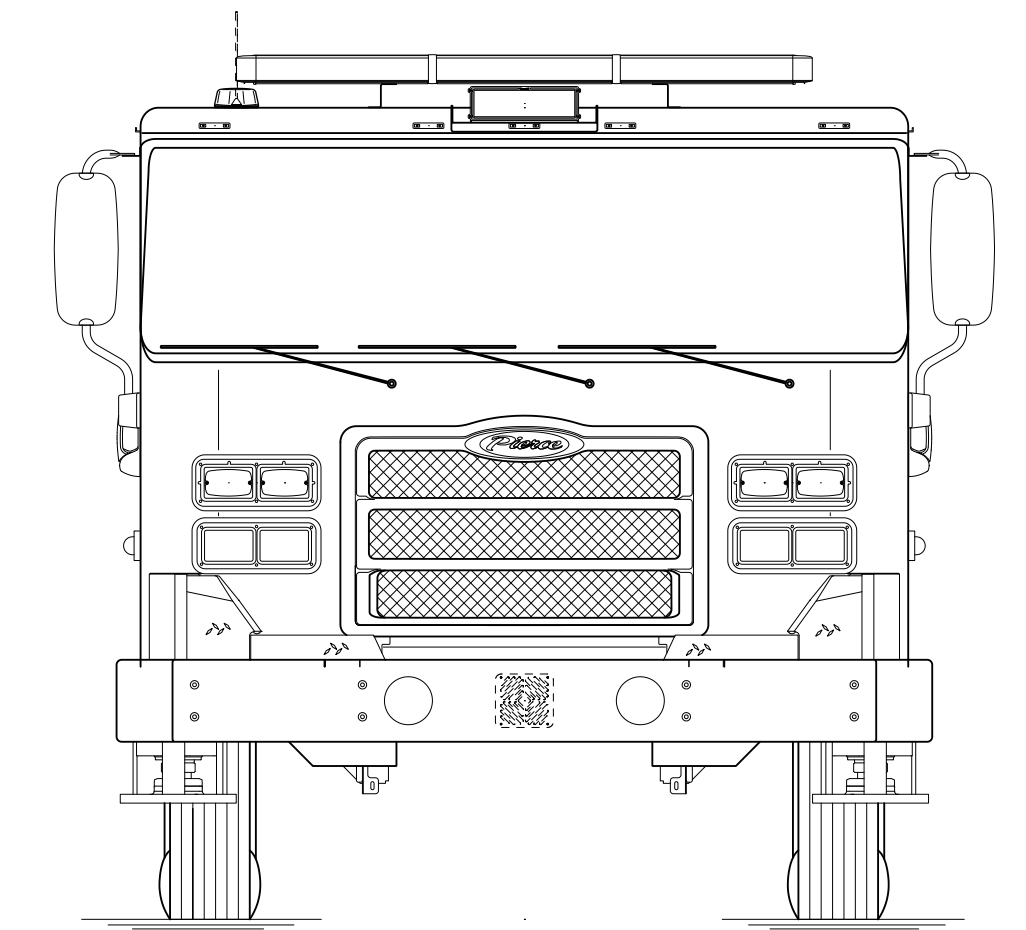
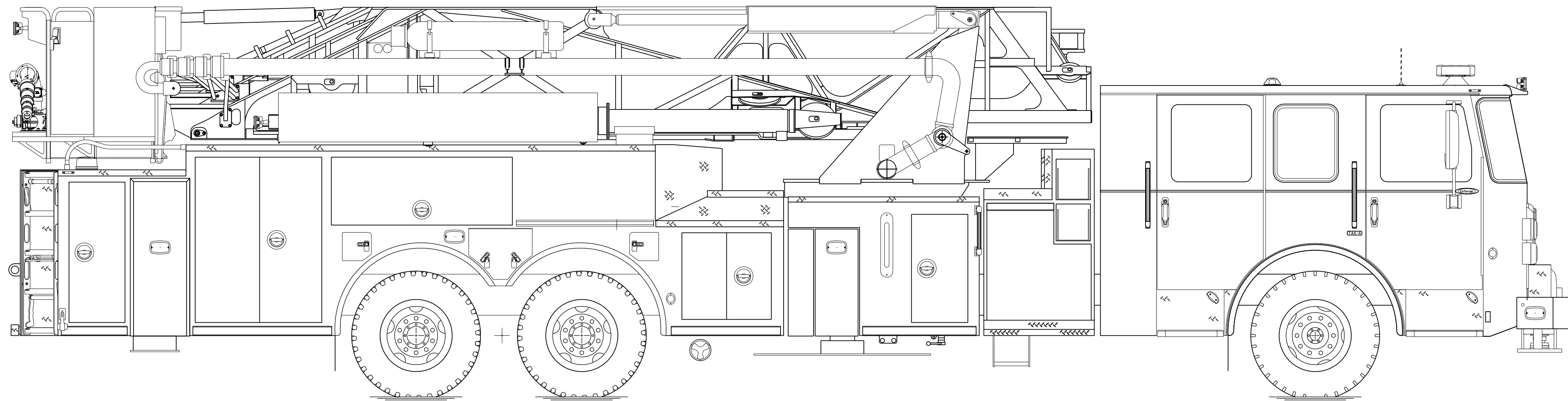


<b>BODY</b> 100' Ascendant Aerial Tower Alum Body <b>COMPT, LEFT SIDE</b> Full Height Lap Doors <b>COMPT, RIGHT SIDE</b> Full Height Lap Doors	<b>WATER TANK</b> 300 Gallon Poly Water Tank <b>Foam System</b> Foam System Not Required <b>Foam Cell</b> Foam Cell Not Required
---	---



<b>CHASSIS</b> Enforcer Chassis <b>ENGINE</b> 510 HP Paccar MX13 Engine	<b>CAB</b> 7000 Enforcer Cab <b>BUMPER</b> 15" Painted Aluminum	<b>AXLE, FRONT, CUSTOM</b> 24,000 Lb TAK-4 Axle <b>AXLE, REAR</b> 52,000 Lb Meritor Axle	<b>TRANSMISSION</b> Allison 6th Gen, 4000 EV5 P	<b>PUMPHOUSE</b> 36" Control Zone Side Mount <b>PUMP</b> 2000 GPM Waterous S100	<b>CROSSLAYS, 1.50"</b> (2) 1.50", With Trays, 200' <b>CROSSLAYS, 2.50"</b> 2.50" Crosslay Not Required	<b>SPEEDLAYS</b> Speedlays Not Required <b>GENERATOR</b> Generator Not Required	<b>SAFETY</b> Side Roll and Frontal Impact Protection	<b>CUSTOMER APPROVAL</b> APPROVED BY: _____ DATE: _____		JOB NO. - SCALE 1:24 DATE -
<b>NOTE</b> DIMENSIONS SHOWN ARE APPROXIMATE AND ARE SUBJECT TO MINOR DEVIATIONS AS MAY OCCUR OR BE NECESSARY IN CONSTRUCTION. MINOR DETAILS NOT SHOWN.	1. SHORELINE RECEPTACLE WITH KUSSMAUL SUPER AUTO-EJECT LOCATED ON DRIVER SIDE OF THE CAB 2. AIR INLET WITH DISCONNECT COUPLING IN THE DRIVER SIDE STEPWELL 3. BATTERY CHARGER LOCATED PER ORDER 4. BATTERY CHARGE INDICATOR LOCATED ON THE DRIVER SIDE SEAT RISER 5. ADJUSTABLE SHELVES LOCATED PER ORDER 6. NON-RAISED AERIAL PEDESTAL 7. 3-IN-1 LYFECOMBO BRACKETS AT AERIAL BASKET	CHASSIS DATA MAKE PIERCE MODEL - REV - DATE - BY - CH -	TITLE - FOR Wall Fire District 3 DWG NO. -	DRAWN BY - CHECKED BY - SHEET SIZE D SHEET NO. 1 OF 1						



NOTE  
LAYOUT AND SIZES PROVIDED BY CUSTOMERS  
MAY VARY DUE TO AVAILABLE WORKING SPACE.

COLOR LEGEND	
PINK	LETTERING (VINYL OR REFLECTIVE)
ORANGE	STRIPING (VINYL OR REFLECTIVE)
GREEN	GOLD LEAF
YELLOW	CUSTOMER FURNISHED PRODUCT

**CUSTOMER APPROVAL**

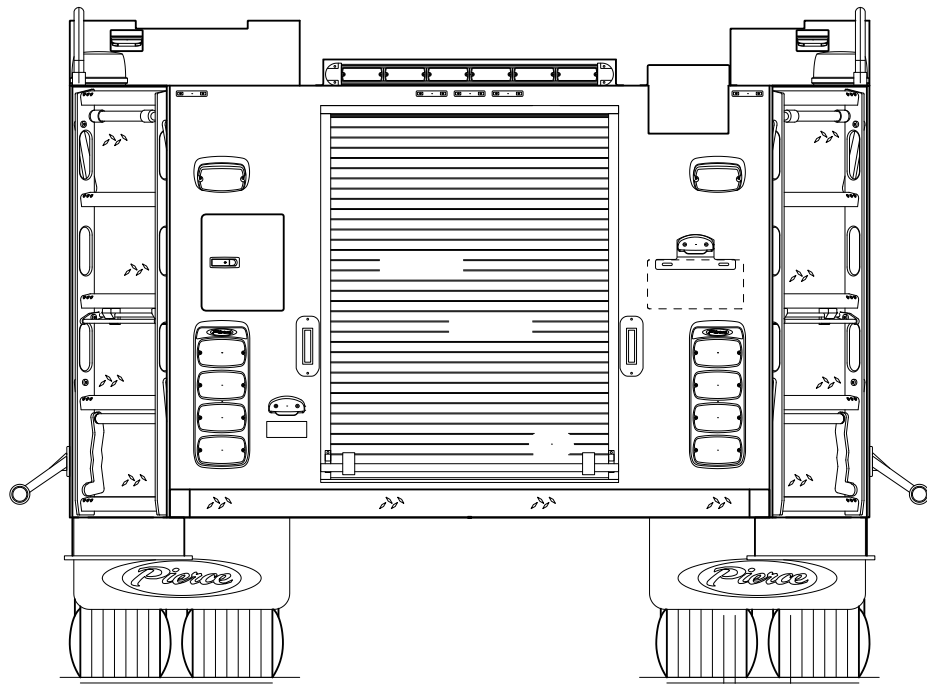
APPROVED BY: \_\_\_\_\_  
DATE: \_\_\_\_\_

REV	DATE	BY	CH



TITLE	LETTERING, STRIPING, AND PAINTING INSTRUCTIONS
FOR	Wall Fire District 3
DWG NO.	LSP-LP

JOB NO.	-
SCALE	1:24
DATE	-
DRAWN BY	-
CHECKED BY	-
SHEET SIZE	D
SHEET NO.	1 of 1



**CUSTOMER APPROVAL**

APPROVED BY: \_\_\_\_\_

DATE: \_\_\_\_\_

NOTE: PLEASE REVIEW CHEVRON COVERAGE AND DOOR MATERIAL PER PULSE OPTIONS. NON-RELATED OR NON-CRITICAL MINOR DEVIATIONS MAY EXIST.



**MANUFACTURING INC.**

JOB NO.

-

SCALE

1:24

DRAWN BY

-

DATE

14APR23

TITLE

CHEVRON DRAWING

-

FOR

Wall Fire District 3

-

DWG NO.

CHEVRON-CD

SHEET SIZE

A

SHEET NO.

1 OF 1