



Pierce Enforcer Pumper
Borough of Woodland Park
Job #37417

FEATURES & SPECIFICATIONS

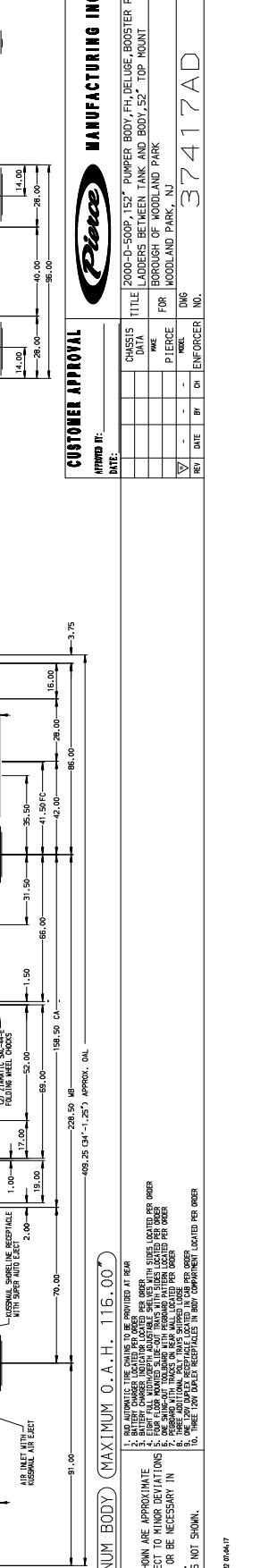
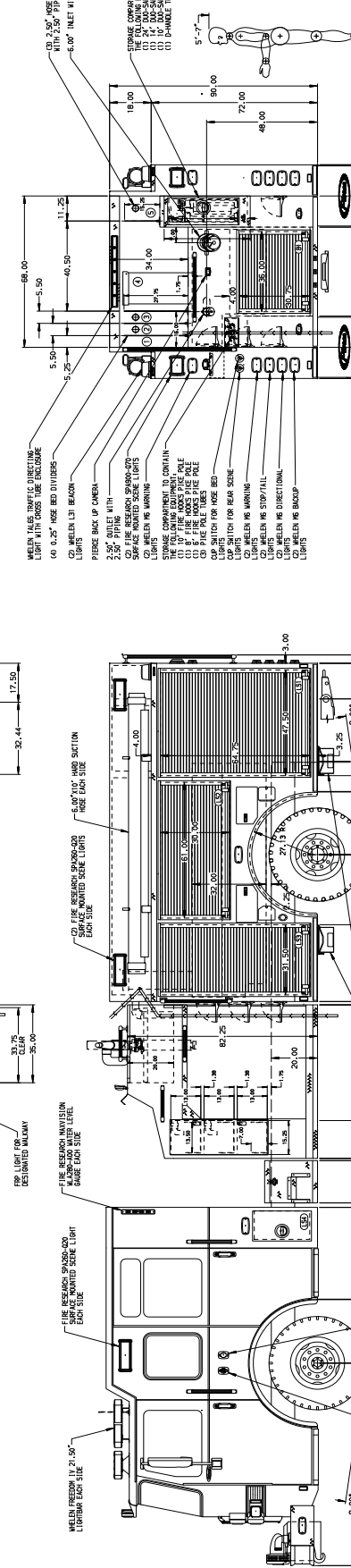
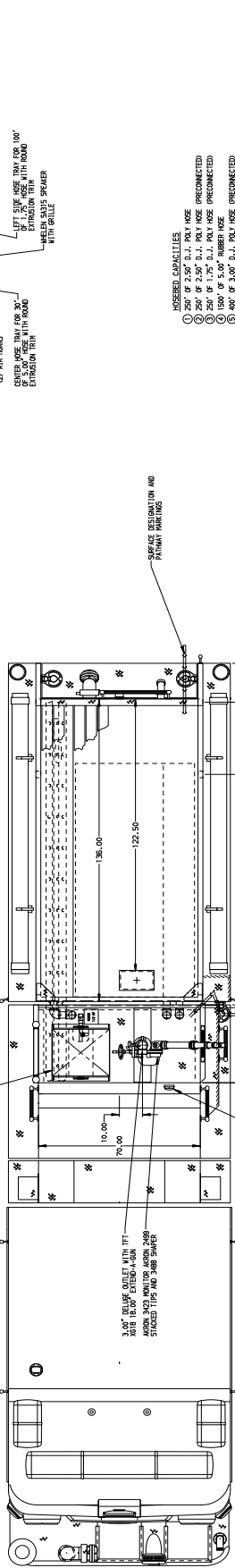
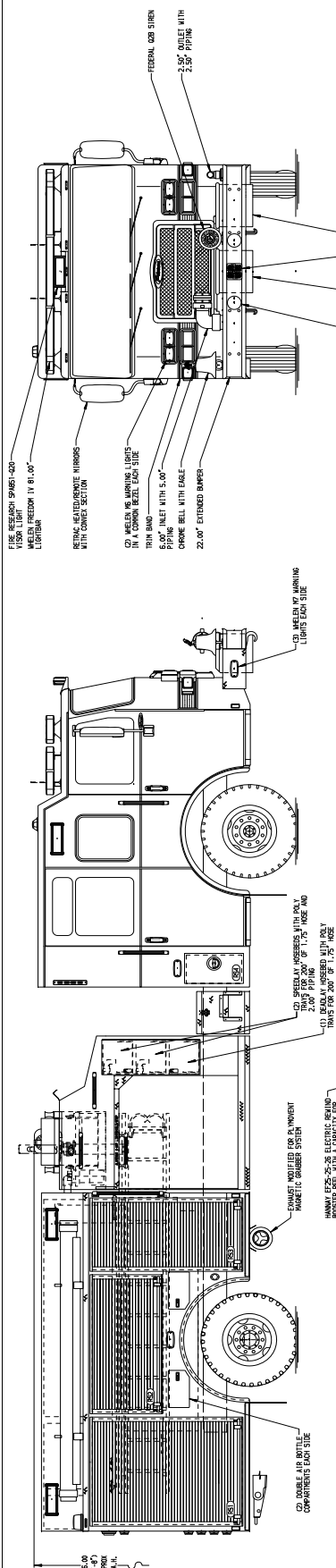
- Pierce Enforcer 70" Chassis with a 10" Raised Roof
- Cummins X15 500hp 2021 EPA compliant Engine
- Allison EVS4500PR Automatic Transmission
- Meritor Front and Rear Axles
- Waterous CSU 2000 GPM Single Stage Pump
- 500 Gallon Poly Water Tank
- Delivered in April 2023



FIRE & SAFETY SERVICES, LTD.

South Plainfield, NJ

web: www.f-ss.com · phone: 800-400-8017



- HOSED CAPACITIES**
- ① 250' OF 2.50" D.I. POLY HOSE
 - ② 250' OF 2.50" D.I. POLY HOSE PRECONNECTED
 - ③ 250' OF 1.75" D.I. POLY HOSE PRECONNECTED
 - ④ 250' OF 1.50" D.I. POLY HOSE PRECONNECTED
 - ⑤ 400' OF 3.00" D.I. POLY HOSE PRECONNECTED
- WHEEL INLET SPECIFICATIONS**
- (C) 6.00\"/>

CUSTOMER APPROVAL

DATE: _____

BY	DATE

MANUFACTURING INC.

2000-D-500P-152' PUMPER BODY, FH, DELUGE, BOOSTER REEL
LADDERS BETWEEN TANK AND BODY, 52' TOP MOUNT
FOR WOODLAND PARK, NJ

37417AD

ALUMINUM BODY (MAXIMUM O.A.H. - 116.00")

NOTE: 1. ALL AUTOMATIC DIMENSIONS TO BE PROVIDED AT REAR. 2. BATTERY COMPARTMENT LOCATED PER ORDER. 3. FLOOR MOUNTED SPARE-TIRE TRAYS WITH TUBS LOCATED PER ORDER. 4. FLOOR MOUNTED SPARE-TIRE TRAYS WITH TUBS LOCATED PER ORDER. 5. FLOOR MOUNTED SPARE-TIRE TRAYS WITH TUBS LOCATED PER ORDER. 6. FLOOR MOUNTED SPARE-TIRE TRAYS WITH TUBS LOCATED PER ORDER. 7. FLOOR MOUNTED SPARE-TIRE TRAYS WITH TUBS LOCATED PER ORDER. 8. FLOOR MOUNTED SPARE-TIRE TRAYS WITH TUBS LOCATED PER ORDER. 9. FLOOR MOUNTED SPARE-TIRE TRAYS WITH TUBS LOCATED PER ORDER. 10. THESE TUBS LOCATED PER ORDER.

JOB NO. 37417 SCALE 1:1 DATE 23MAY22
DRAWN BY BST ORDERED BY PHA
SHEET NO. 1 OF 1