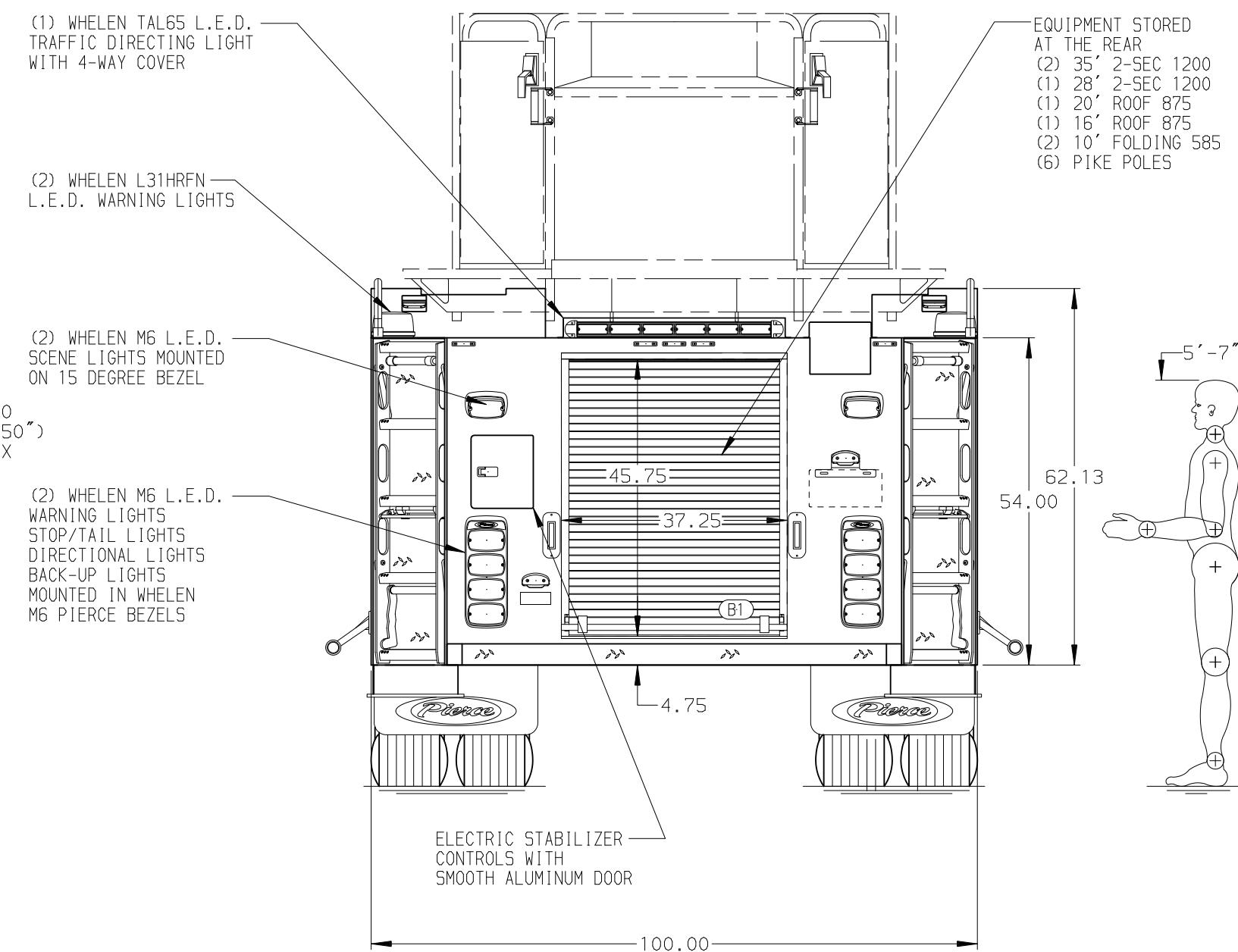
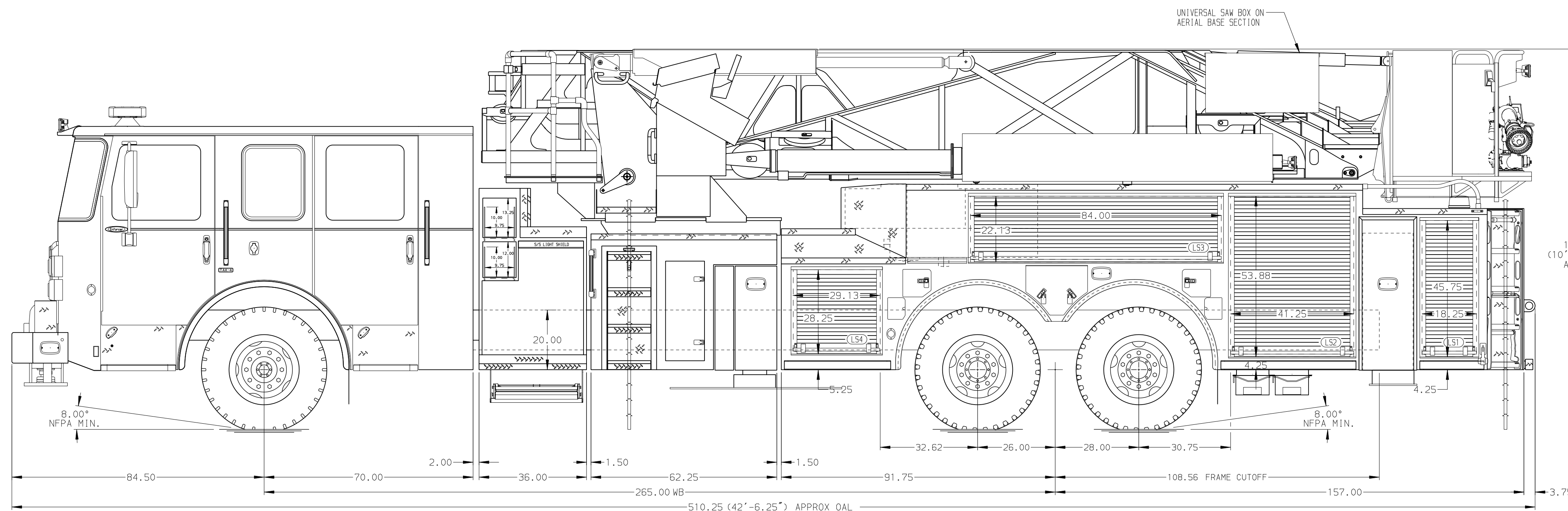
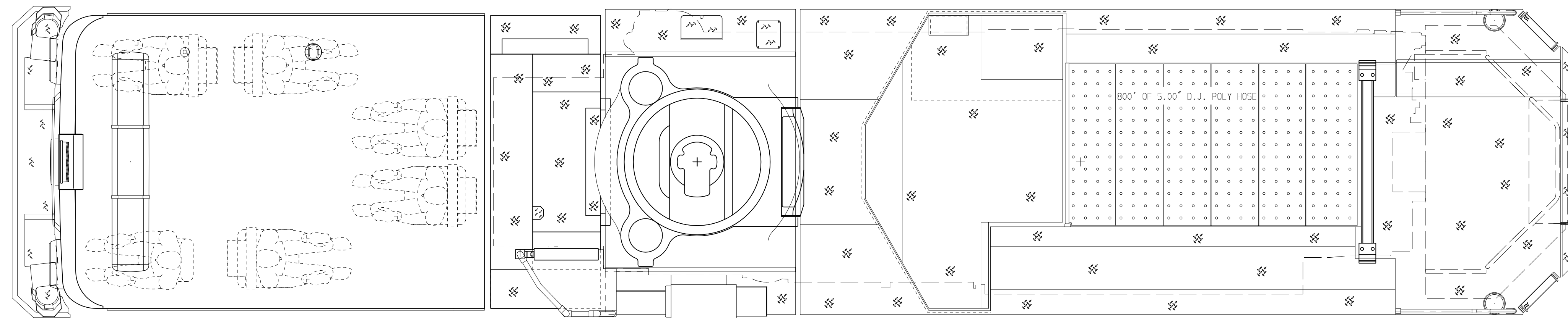
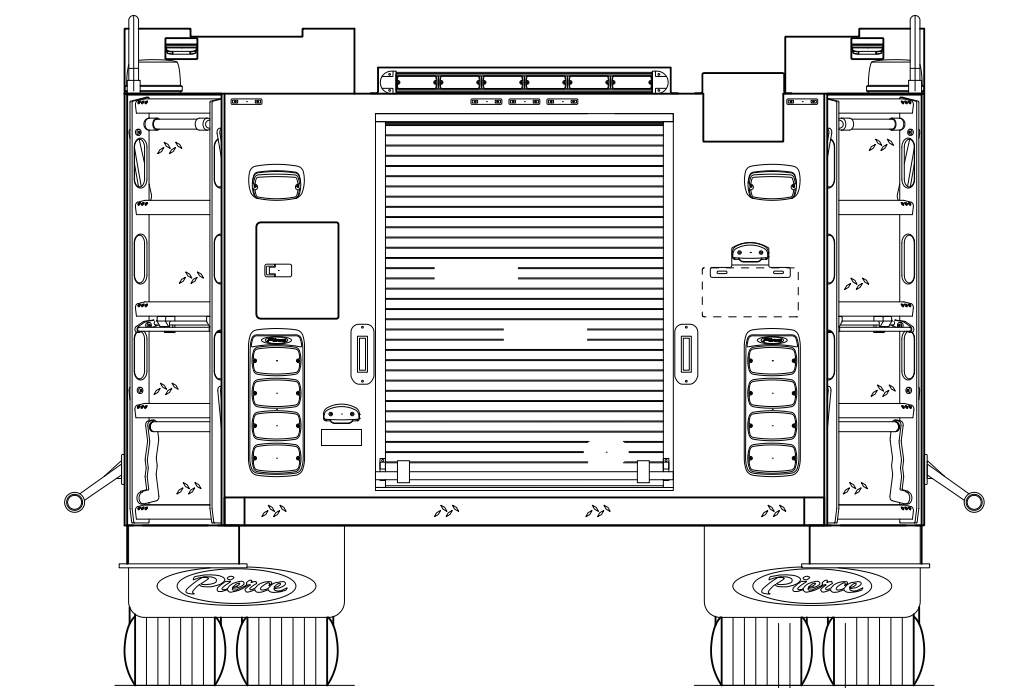
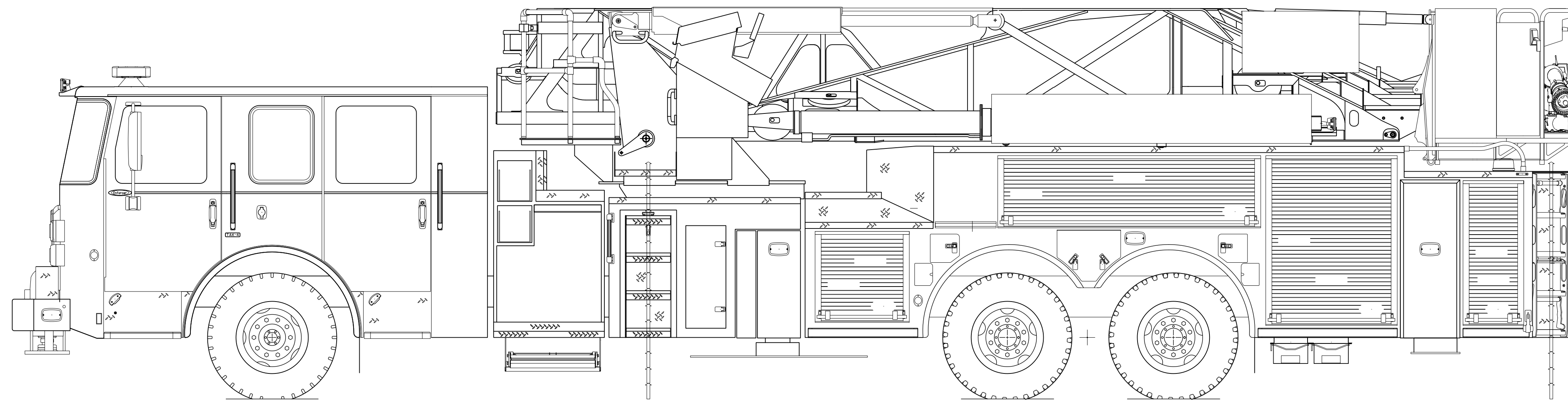
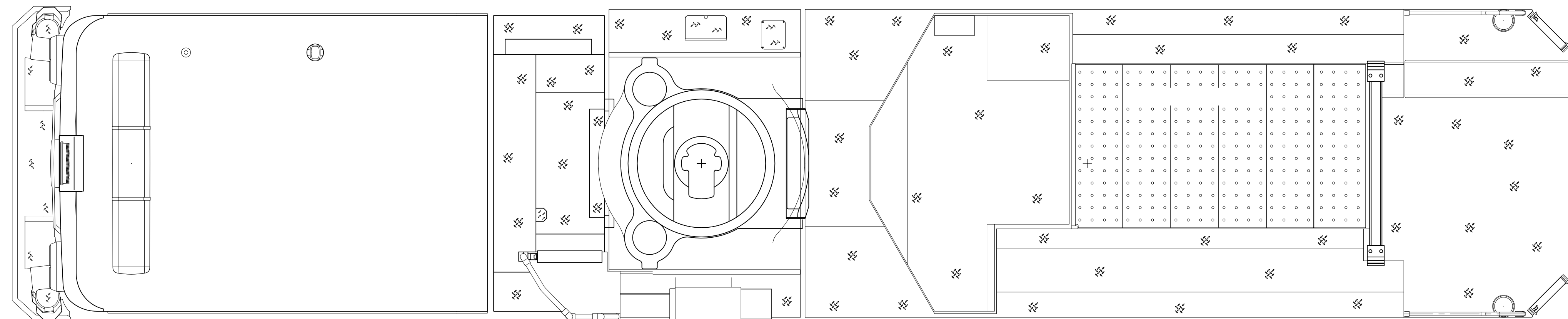
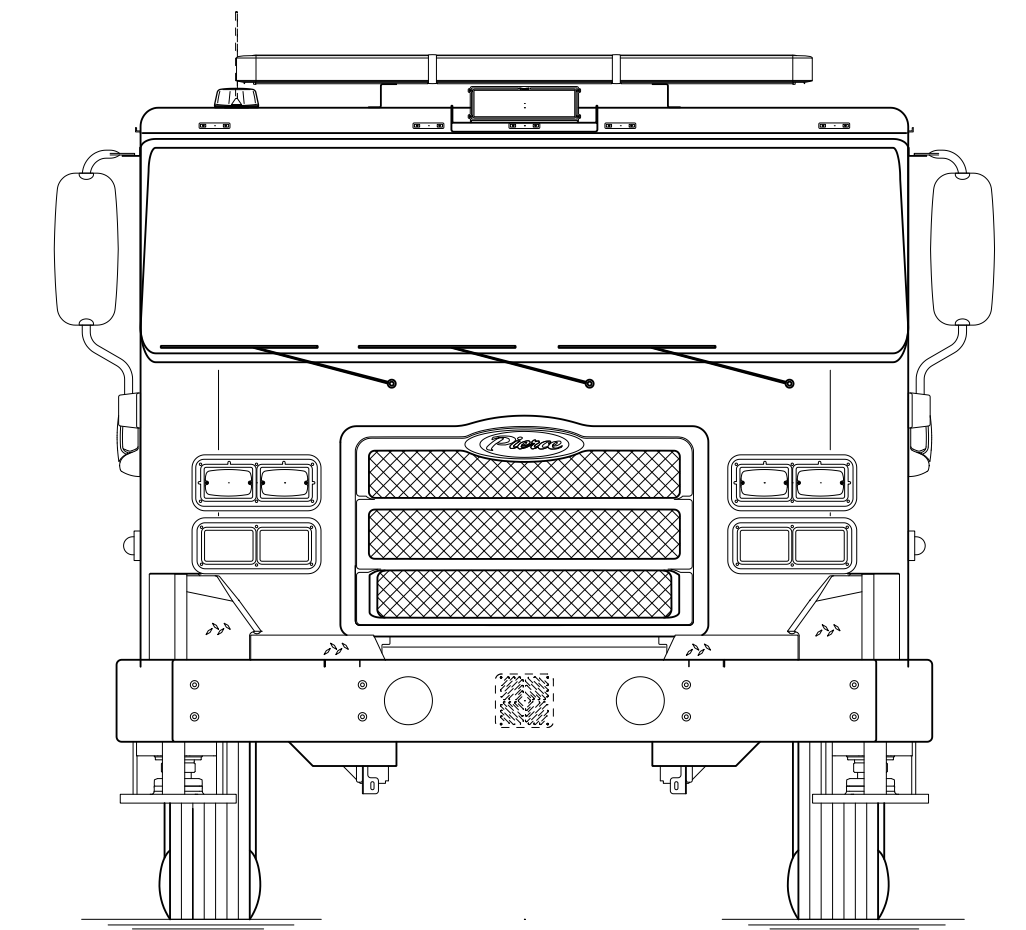
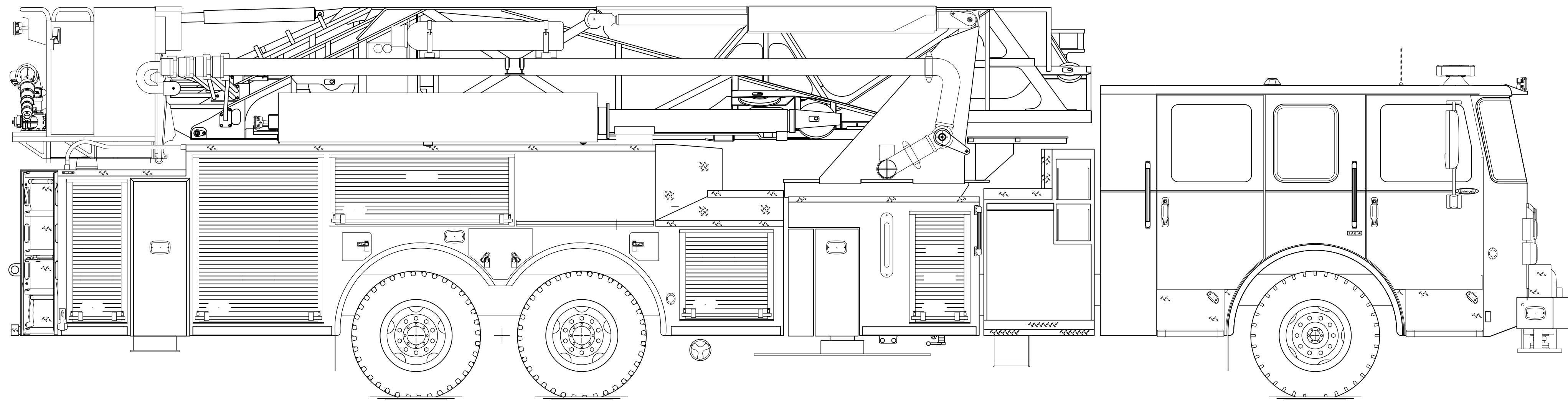


BODY 100' Ascendant Aerial Tower Alum Body COMPT, LEFT SIDE Full Height RollUp Doors COMPT, RIGHT SIDE Full Height RollUp Doors	WATER TANK 300 Gallon Poly Water Tank Foam System Foam System Not Required Foam Cell Foam Cell Not Required
---	---



CHASSIS Enforcer Chassis ENGINE 525 HP Cummins X12 Engine	CAB 7000 Enforcer Cab BUMPER 15\" Painted Aluminum	AXLE, FRONT, CUSTOM 23,000 Lb Dana Axle AXLE, REAR 52,000 Lb Meritor Axle	TRANSMISSION Allison 6th Gen, 4000 EV5 P	PUMPHOUSE 36\" Control Zone Side Mount PUMP 2000 GPM Waterous S100	CROSSLAYS, 1.50\" CROSSLAYS, 2.50\" 2.50\" Crosslay Not Required	SPEEDLAYS Speedlays Not Required GENERATOR Generator Not Required	SAFETY Side Roll and Frontal Impact Protection	CUSTOMER APPROVAL APPROVED BY: _____ DATE: _____		JOB NO. - SCALE 1:24 DATE -
NOTE DIMENSIONS SHOWN ARE APPROXIMATE AND ARE SUBJECT TO MINOR DEVIATIONS AS MAY OCCUR OR BE NECESSARY IN CONSTRUCTION. MINOR DETAILS NOT SHOWN.										
1. SHORELINE RECEPTACLE WITH KUSSMAUL SUPER AUTO-EJECT LOCATED ON DRIVER SIDE OF THE CAB 2. AIR INLET WITH DISCONNECT COUPLING IN THE DRIVER SIDE STEPWELL 3. BATTERY CHARGER LOCATED PER ORDER 4. BATTERY CHARGE INDICATOR LOCATED ON THE DRIVER SIDE SEAT RISER 5. ADJUSTABLE SHELVES LOCATED PER ORDER 6. NON-RAISED AERIAL PEDESTAL 7. 3-IN-1 LYFECOMBO BRACKETS AT AERIAL BASKET										
REV	DATE	BY	CH	CHASSIS DATA	TITLE	MAKE	FOR	DWG NO.	SHEET SIZE	SHEET NO.
				PIERCE	Linden FD 100 AAT Pump No Tank				D	1 OF 1



NOTE
LAYOUT AND SIZES PROVIDED BY CUSTOMERS
MAY VARY DUE TO AVAILABLE WORKING SPACE.

COLOR LEGEND	
PINK	LETTERING (VINYL OR REFLECTIVE)
ORANGE	STRIPING (VINYL OR REFLECTIVE)
GREEN	GOLD LEAF
YELLOW	CUSTOMER FURNISHED PRODUCT

CUSTOMER APPROVAL

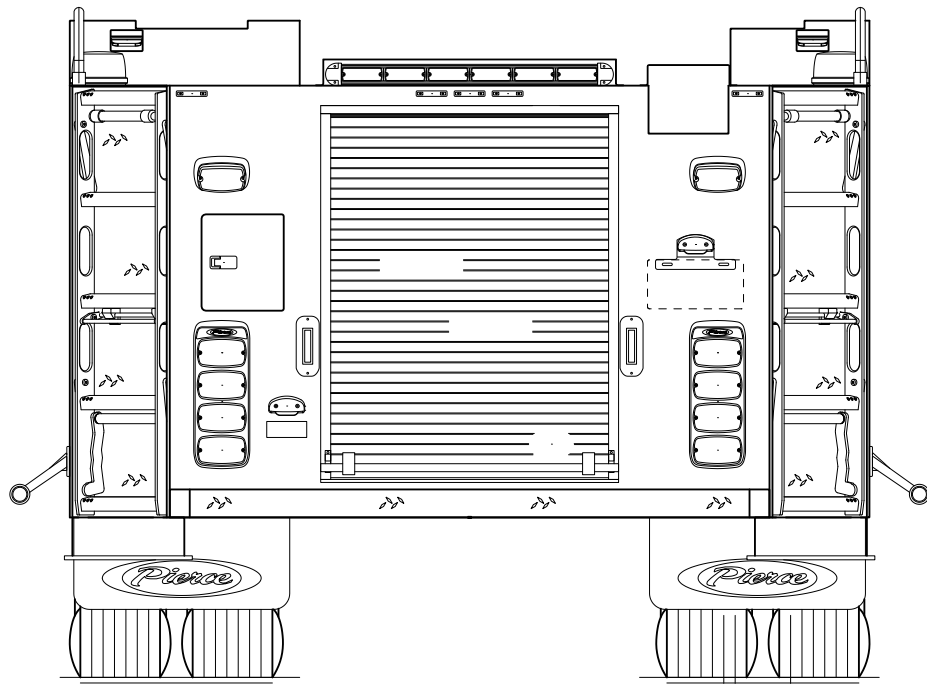
APPROVED BY: _____
DATE: _____

REV	DATE	BY	CH



TITLE	LETTERING, STRIPING, AND PAINTING INSTRUCTIONS
FOR	Linden FD 100 AAT Pump No Tank
DWG NO.	LSP-LP

JOB NO.	-
SCALE	1:24
DATE	-
DRAWN BY	-
CHECKED BY	-
SHEET SIZE	D
SHEET NO.	1 of 1



CUSTOMER APPROVAL

APPROVED BY: _____

DATE: _____

NOTE: PLEASE REVIEW CHEVRON COVERAGE AND DOOR MATERIAL PER PULSE OPTIONS. NON-RELATED OR NON-CRITICAL MINOR DEVIATIONS MAY EXIST.



MANUFACTURING INC.

JOB NO.

-

SCALE

1:24

DRAWN BY

-

DATE

20FEB23

TITLE

CHEVRON DRAWING

-

FOR

Linden FD 100 AAT Pump No Tank

-

DWG NO.

CHEVRON-CD

SHEET SIZE

A

SHEET NO.

1 OF 1