



Pierce Enforcer Heavy Duty Rescue
New Jersey Transit
Job #36808

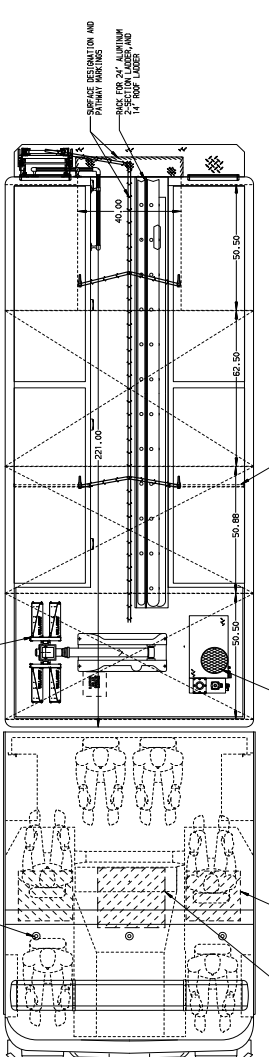
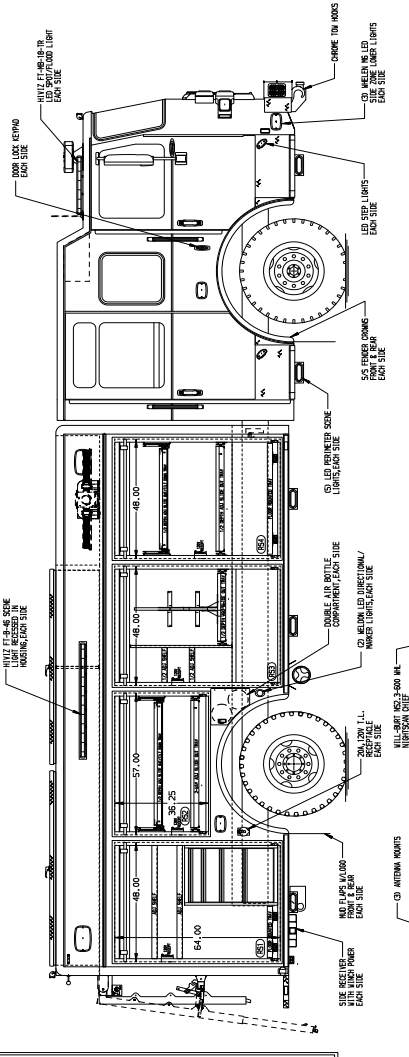
FEATURES & SPECIFICATIONS

- Pierce Enforcer 60" Chassis with a 10" Raised Roof
- Cummins L9 380HP 2021 EPA compliant Engine
- Allison EVS3000P Automatic Transmission
- Dana Front and Rear Axles
- 18.5' Non Walk-in Body
- Harrison MSV 6kW Hydraulic Generator
- Delivered in February 2023

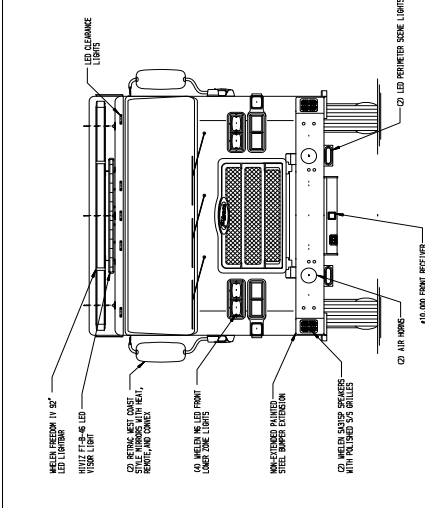
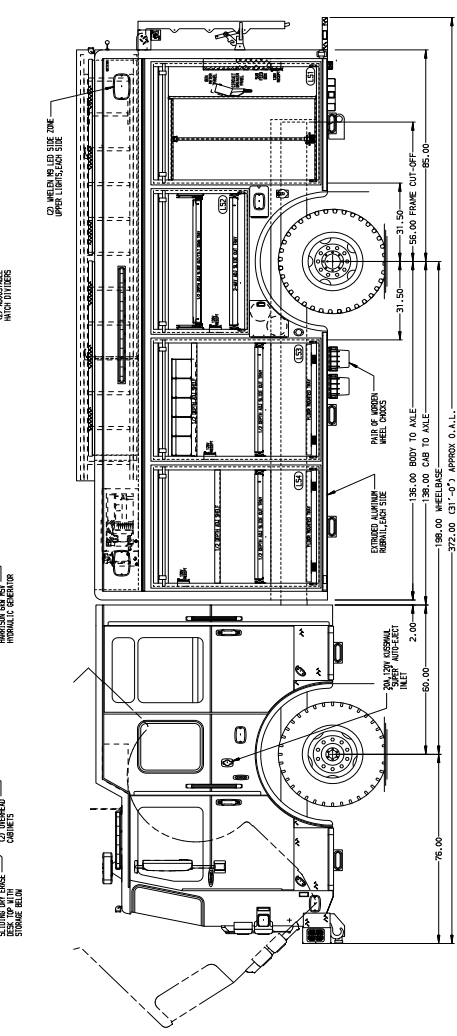


FIRE & SAFETY SERVICES, LTD.
South Plainfield, NJ
web: www.f-ss.com · phone: 800-400-8017

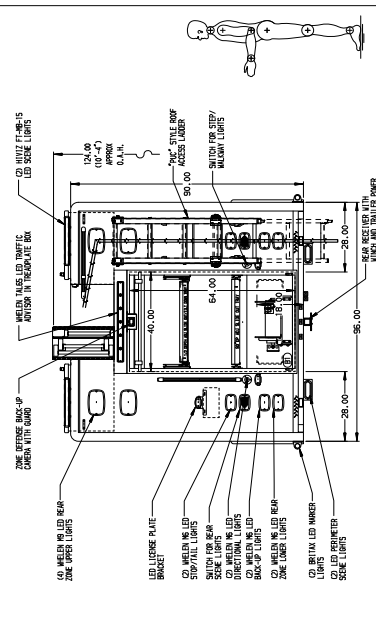
- RIGHT SIDE COMPARTMENTS CONTAIN THE FOLLOWING:**
- COMPARTMENT 1S CONTAINS:
 - (1) 24" WIDE 18" HIGH 1" THICK FLAT TRAY
 - (1) 12" DEPTH 18" WIDE 1" THICK FLAT TRAY
 - (1) 18" WIDE 24" DEEP 1" THICK FLAT TRAY
 - (1) 15A, 20W DUMPER RECEIVABLE
 - COMPARTMENT 2S CONTAINS:
 - (1) 24" WIDE 18" HIGH 1" THICK FLAT TRAY
 - (1) 12" DEPTH 18" WIDE 1" THICK FLAT TRAY
 - (1) 18" WIDE 24" DEEP 1" THICK FLAT TRAY
 - (1) 15A, 20W DUMPER RECEIVABLE
 - COMPARTMENT 3S CONTAINS:
 - (1) 24" WIDE 18" HIGH 1" THICK FLAT TRAY
 - (1) 12" DEPTH 18" WIDE 1" THICK FLAT TRAY
 - (1) 18" WIDE 24" DEEP 1" THICK FLAT TRAY
 - (1) 15A, 20W DUMPER RECEIVABLE
 - COMPARTMENT 4S CONTAINS:
 - (1) 24" WIDE 18" HIGH 1" THICK FLAT TRAY
 - (1) 12" DEPTH 18" WIDE 1" THICK FLAT TRAY
 - (1) 18" WIDE 24" DEEP 1" THICK FLAT TRAY
 - (1) 15A, 20W DUMPER RECEIVABLE



- LEFT SIDE COMPARTMENTS CONTAIN THE FOLLOWING:**
- COMPARTMENT 1L CONTAINS:
 - (1) 24" WIDE 18" HIGH 1" THICK FLAT TRAY
 - (1) 12" DEPTH 18" WIDE 1" THICK FLAT TRAY
 - (1) 18" WIDE 24" DEEP 1" THICK FLAT TRAY
 - (1) 15A, 20W DUMPER RECEIVABLE
 - COMPARTMENT 2L CONTAINS:
 - (1) 24" WIDE 18" HIGH 1" THICK FLAT TRAY
 - (1) 12" DEPTH 18" WIDE 1" THICK FLAT TRAY
 - (1) 18" WIDE 24" DEEP 1" THICK FLAT TRAY
 - (1) 15A, 20W DUMPER RECEIVABLE
 - COMPARTMENT 3L CONTAINS:
 - (1) 24" WIDE 18" HIGH 1" THICK FLAT TRAY
 - (1) 12" DEPTH 18" WIDE 1" THICK FLAT TRAY
 - (1) 18" WIDE 24" DEEP 1" THICK FLAT TRAY
 - (1) 15A, 20W DUMPER RECEIVABLE
 - COMPARTMENT 4L CONTAINS:
 - (1) 24" WIDE 18" HIGH 1" THICK FLAT TRAY
 - (1) 12" DEPTH 18" WIDE 1" THICK FLAT TRAY
 - (1) 18" WIDE 24" DEEP 1" THICK FLAT TRAY
 - (1) 15A, 20W DUMPER RECEIVABLE



- REAR COMPARTMENT CONTAINS THE FOLLOWING:**
- COMPARTMENT 5R CONTAINS:
 - (1) 30\"/>



CUSTOMER APPROVAL		JOB NO. 36808	
DATE:		DATE:	11/24
BY:		BY:	DHE
DATE:		DATE:	11/NOV/21
BY:		BY:	CDK
DATE:		DATE:	15/NOV/21
BY:		BY:	ERIC IREVENA
DATE:		DATE:	
BY:		DATE:	
DATE:		DATE:	
BY:		DATE:	

TITLE		JOB NO. 36808A	
DATE:		DATE:	11/24
BY:		BY:	DHE
DATE:		DATE:	11/NOV/21
BY:		BY:	CDK
DATE:		DATE:	15/NOV/21
BY:		BY:	ERIC IREVENA
DATE:		DATE:	
BY:		DATE:	
DATE:		DATE:	
BY:		DATE:	

CHASSIS DATA		JOB NO. 36808A	
DATE:		DATE:	11/24
BY:		BY:	DHE
DATE:		DATE:	11/NOV/21
BY:		BY:	CDK
DATE:		DATE:	15/NOV/21
BY:		BY:	ERIC IREVENA
DATE:		DATE:	
BY:		DATE:	
DATE:		DATE:	
BY:		DATE:	

CLEAR BULK W/OUT SET		JOB NO. 36808A	
DATE:		DATE:	11/24
BY:		BY:	DHE
DATE:		DATE:	11/NOV/21
BY:		BY:	CDK
DATE:		DATE:	15/NOV/21
BY:		BY:	ERIC IREVENA
DATE:		DATE:	
BY:		DATE:	
DATE:		DATE:	
BY:		DATE:	

NOTE:
DIMENSIONS SHOWN ARE APPROXIMATE AND ARE SUBJECT TO MINOR DEVIATIONS AS MAY OCCUR OR BE NECESSARY IN CONSTRUCTION.
MINOR DETAILS NOT SHOWN.

