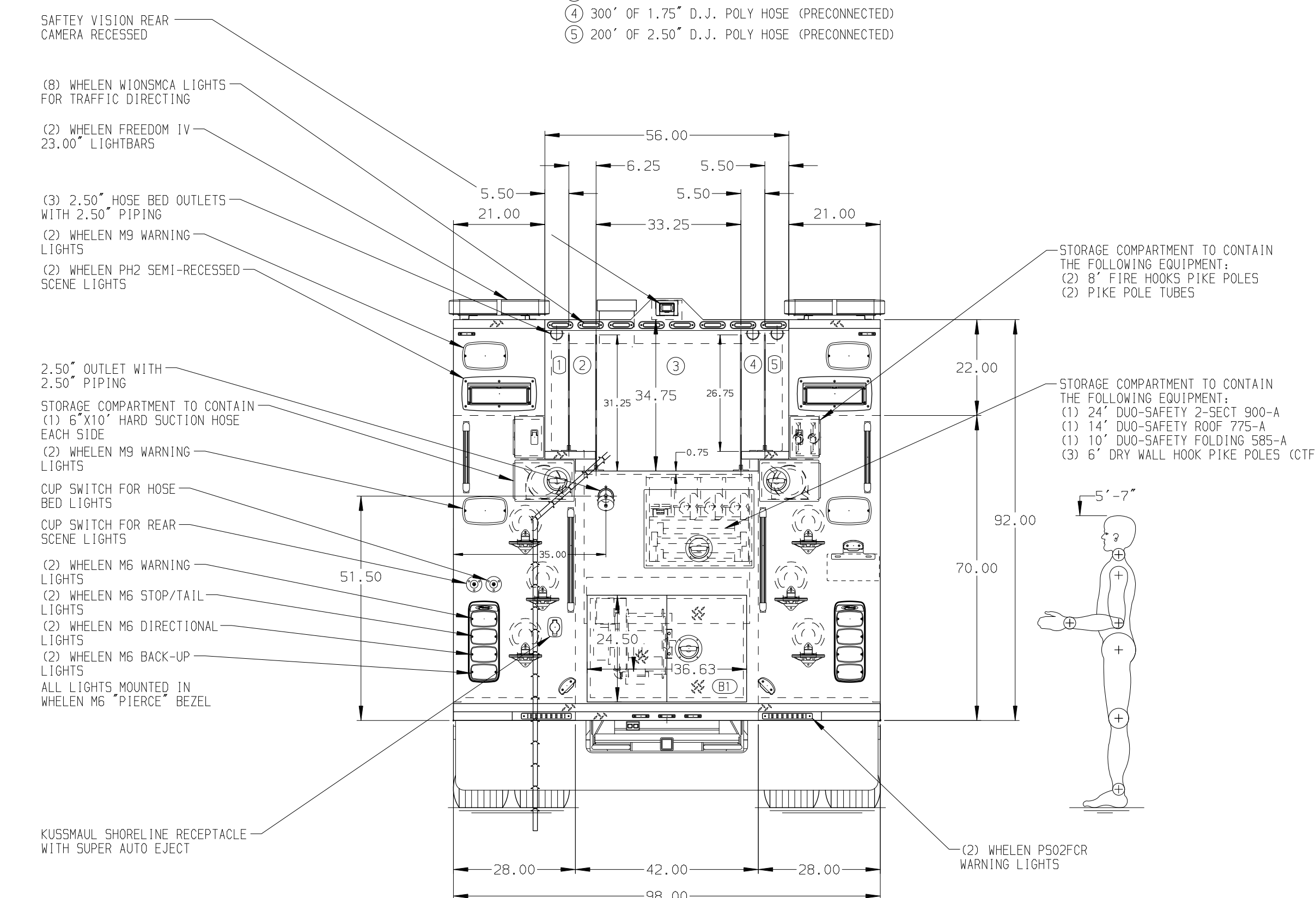


- HOSEBED CAPACITIES**
- ① 200' OF 2.50" D.J. POLY HOSE (PRECONNECTED)
  - ② 250' OF 3.00" D.J. POLY HOSE
  - ③ 1500' OF 5.00" RUBBER HOSE
  - ④ 300' OF 1.75" D.J. POLY HOSE (PRECONNECTED)
  - ⑤ 200' OF 2.50" D.J. POLY HOSE (PRECONNECTED)



**ALUMINUM BODY**

**NOTE**  
 DIMENSIONS SHOWN ARE APPROXIMATE AND ARE SUBJECT TO MINOR DEVIATIONS AS MAY OCCUR OR BE NECESSARY IN CONSTRUCTION. MINOR DETAILS NOT SHOWN.

- 1. AIR OUTLET WITH SHUT OFF VALVE LOCATED PER ORDER
- 2. BATTERY CHARGER LOCATED PER ORDER
- 3. BATTERY CHARGER INDICATOR LOCATED PER ORDER
- 4. ONE RECEPTACLE BOX WITH (4) RECEPTACLES IN CAB LOCATED PER ORDER
- 5. ONE 120V DUPLEX RECEPTACLE LOCATED IN CAB PER ORDER

		JOB NO.	37352
		SCALE	DATE
<b>CHASSIS DATA</b> TITLE 2000-D-750P, 177" HDRP 3G BODY, LADDERS THRU TANK 54" SIDE CONTROL, DELUGE, LIGHT TOWER MAKE PIERCE FOR BOROUGH OF OLD TAPPAN OLD TAPPAN, NJ MODEL DWG NO. 37352AD-SH1	DRAWN BY BST	13APR22	
	CHECKED BY MGE	14APR22	
SHEET SIZE D	SHEET NO. 1 OF 2		

REV	DATE	BY	CH	ARROW XT
1	12DEC22	BST	PHA	
2	08SEP22	BST	MGE	
3	28APR22	BST	MGE	