



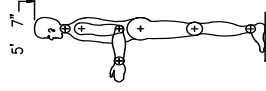
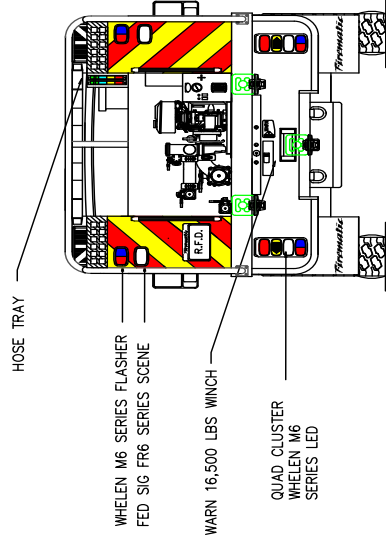
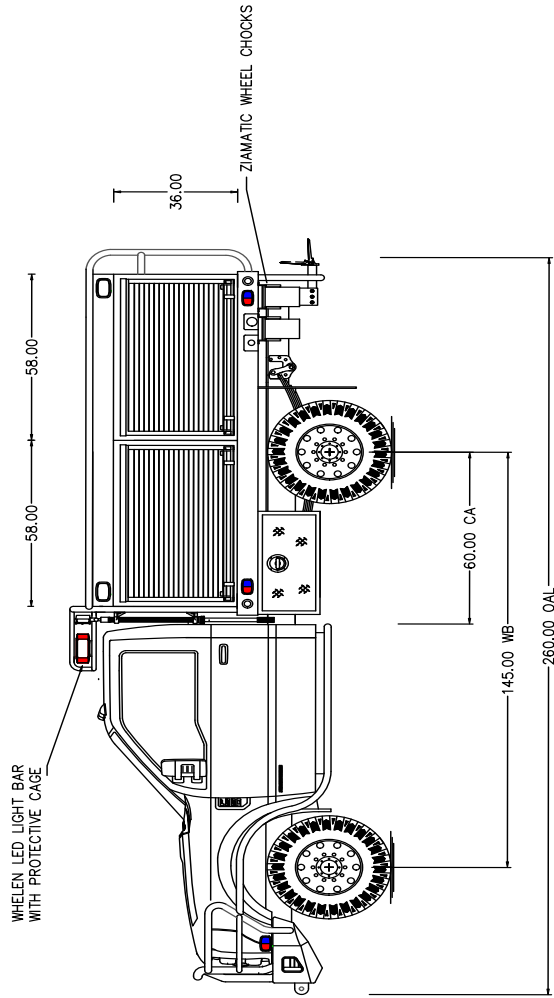
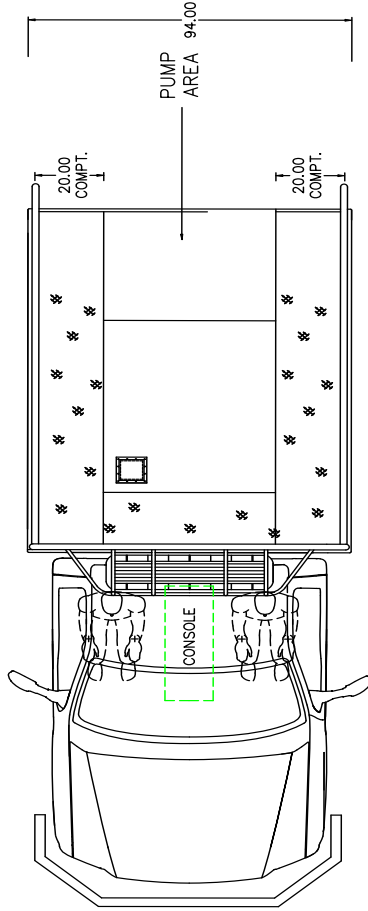
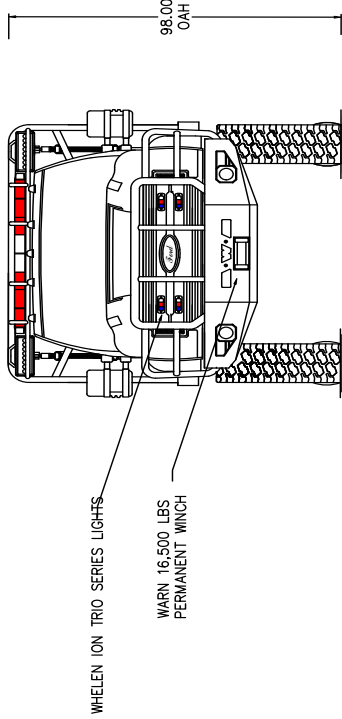
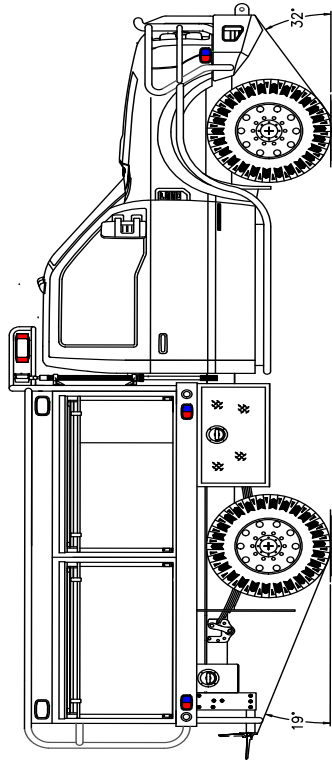
**Firematic Ford F-550 4x4 Rally BRAT 300**  
Randolph Township  
Job #B11192RAN

FEATURES & SPECIFICATIONS

- Ford F-550 4x4 4-Door Chassis
- Ford PowerStroke 6.7L 330hp Diesel Engine
- Firematic Alum. Deck Plate with Diamondplate Compt. & ROM doors
- Darley 2-1/2 AGE Honda Pump Package 375 GPM
- 300 Gallons ProPoly Water Tank
- Two(2) 1.5" Rear Discharge, Hose Reel
- Delivered December 2022



***FIRE & SAFETY SERVICES, LTD.***  
South Plainfield, NJ  
web: [www.f-ss.com](http://www.f-ss.com) · phone: 800-400-8017



NOTE:  
THIS DRAWING IS CONCEPTUAL AND IS NOT AN  
EXACT REPRESENTATION OF THE TRUCK. DRAWN  
DIMENSIONS SHOWN ARE APPROXIMATE  
AND ARE SUBJECT TO DEVIATION AS MAY  
OCCUR OR BE NECESSARY IN CONSTRUCTION.  
SOME DETAILS NOT SHOWN.

300 GALLON POLY-TANK  
HPX275-B35 GASOLINE PUMP  
SUPER SINGLE FOUNDERS TIRE PACKAGE

Firematic MANUFACTURING		JOB NO.	2205
		DATE	03/09/21
		DRAWN BY	D. HORTON
		APPROVED BY :	D. HORTON
		TITLE	RALLY BRAT 300
		CHASSIS DATA	
		CHASSIS	FORD
		MODEL	F-550
		FOR	RANDOLPH FD.
			RANDOLPH, NJ.