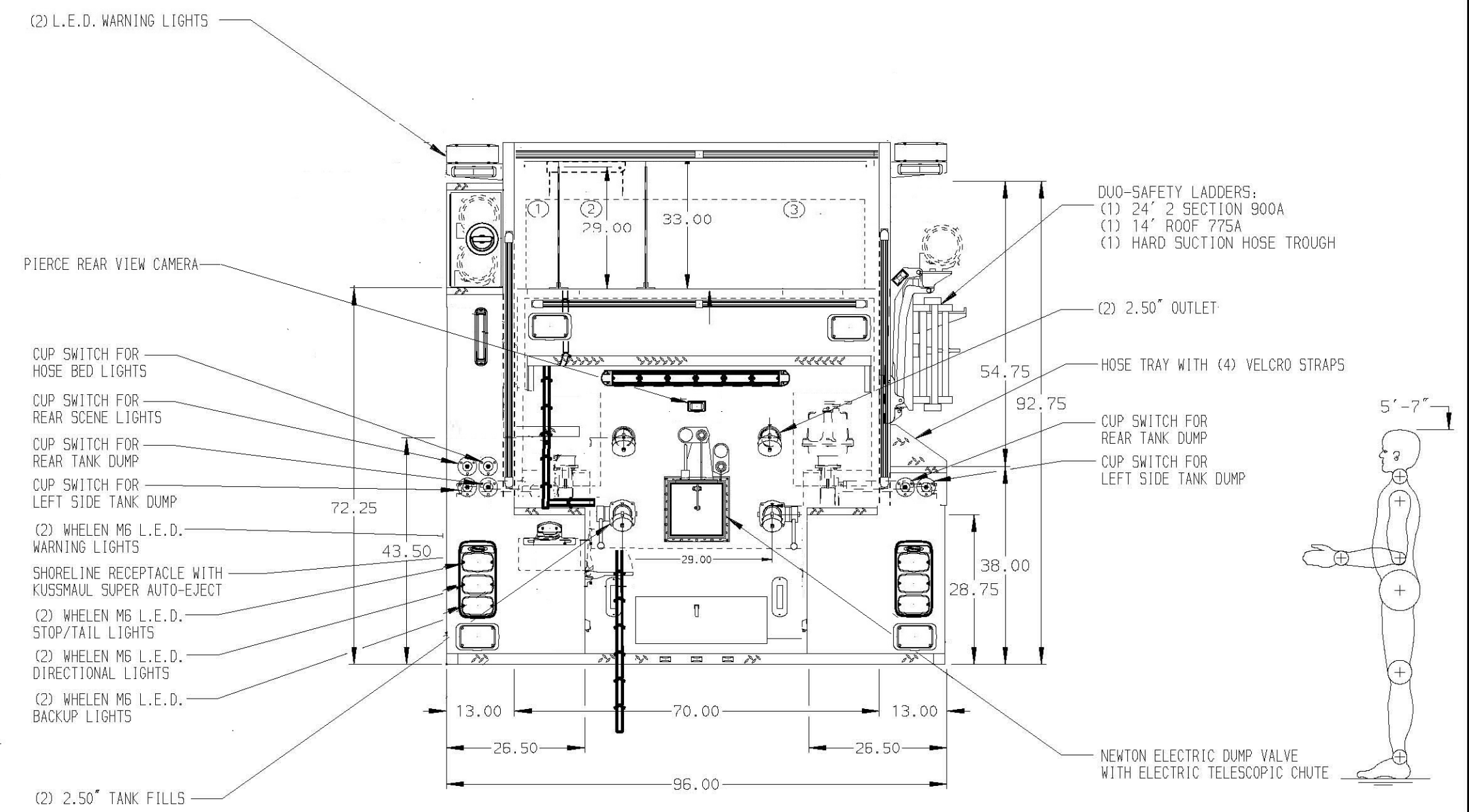
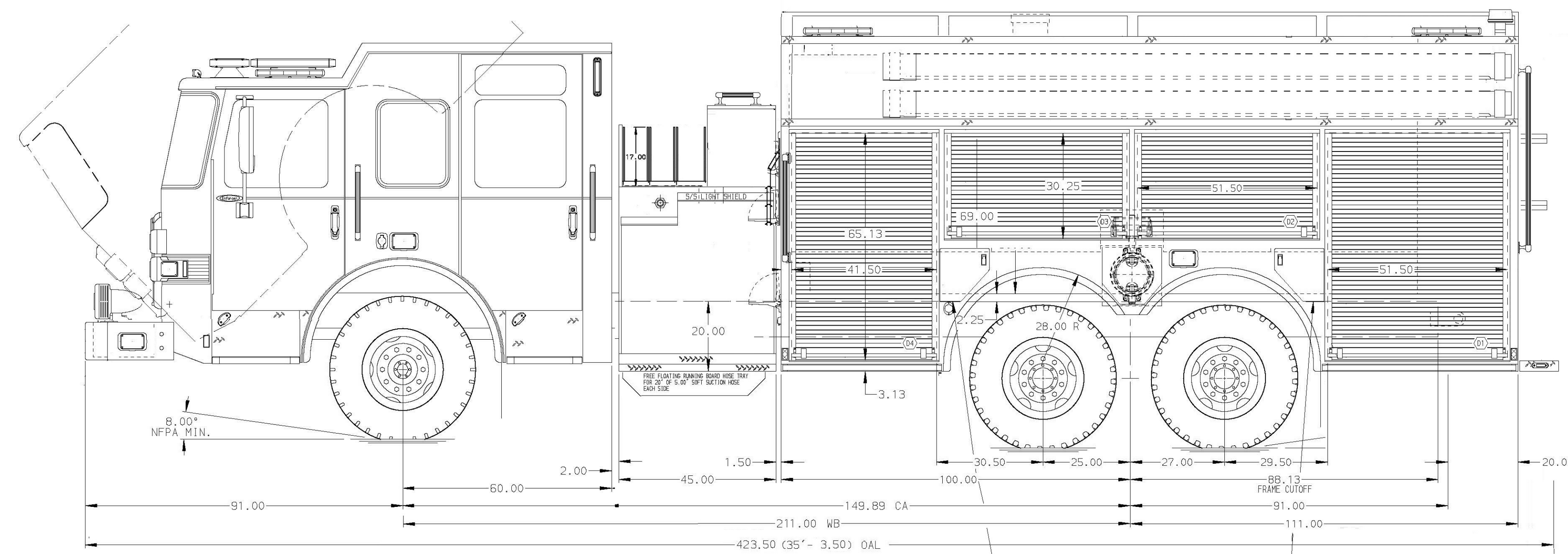


- HOSED CAPACITIES
- ① 300' OF 2.00" HOSE
 - ② 400' OF 3.00" HOSE
 - ③ 1000' OF 5.00" HOSE



ALUMINUM BODY

NOTE
DIMENSIONS SHOWN ARE APPROXIMATE AND ARE SUBJECT TO MINOR DEVIATIONS AS MAY OCCUR OR BE NECESSARY IN CONSTRUCTION. MINOR DETAILS NOT SHOWN.

(1) SINGLE AIR BOTTLE COMPARTMENT WITH D.E.F. FILL ACCESS IN COMMON TRIPLE DOOR
(1) SINGLE AIR BOTTLE COMPARTMENT WITH FUEL FILL ACCESS IN COMMON TRIPLE DOOR

		JOB NO.	
		SCALE 1:24	DATE
TITLE	1500-D-2500P W/ 20 GAL FOAM CELL, 211" TANKER BODY ZICO LADDER RACK, (3) CROSSLAYS, HUSKY 3		DRAWN BY EET
FOR	TOWNSHIP OF CHESTER CHESTER, NEW JERSEY		CHECKED BY EET
DWG NO.	PRELIMINARY DRAWING		SHEET SIZE D
REV	DATE	BY	CH
ENFORCER			

