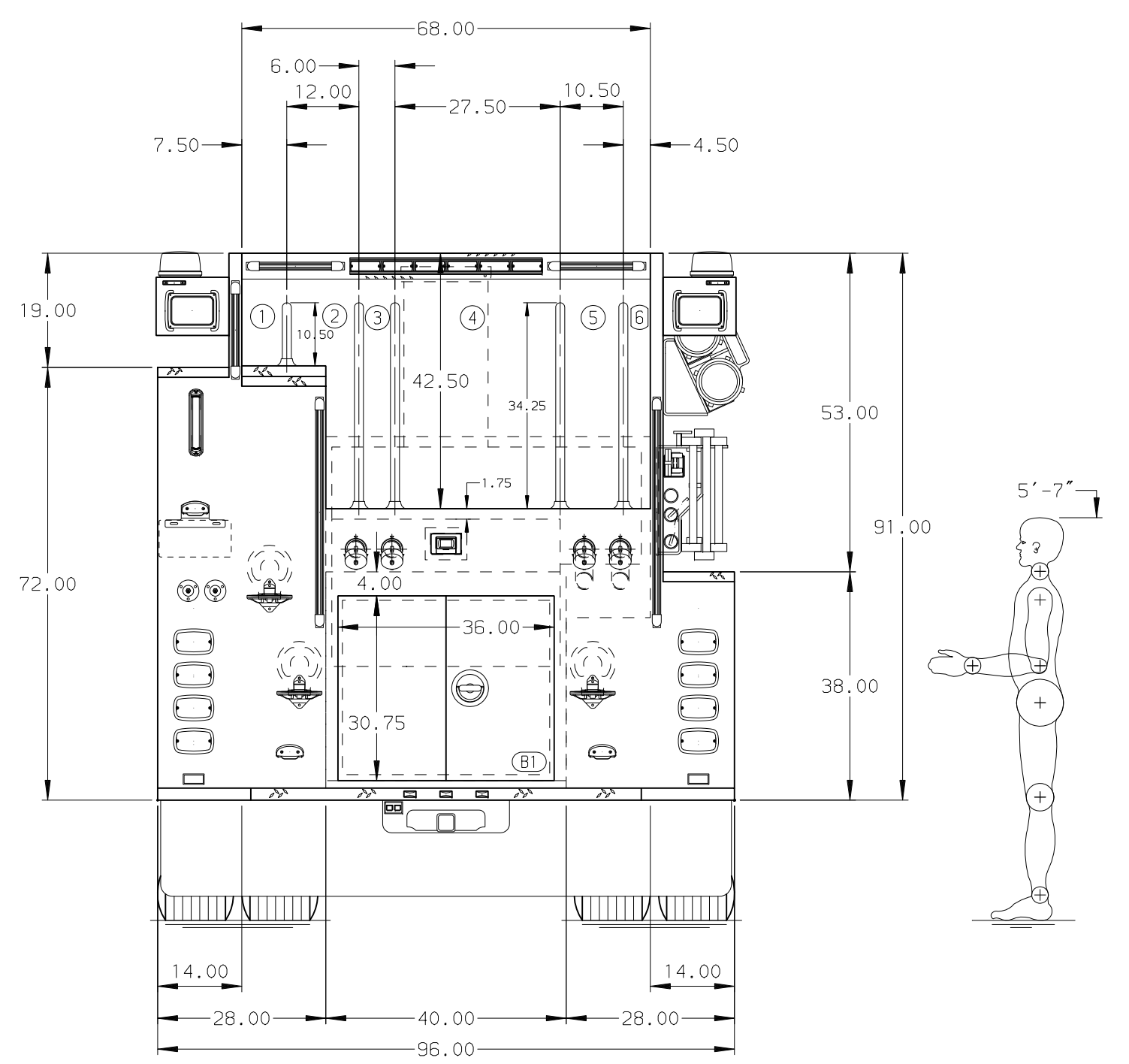
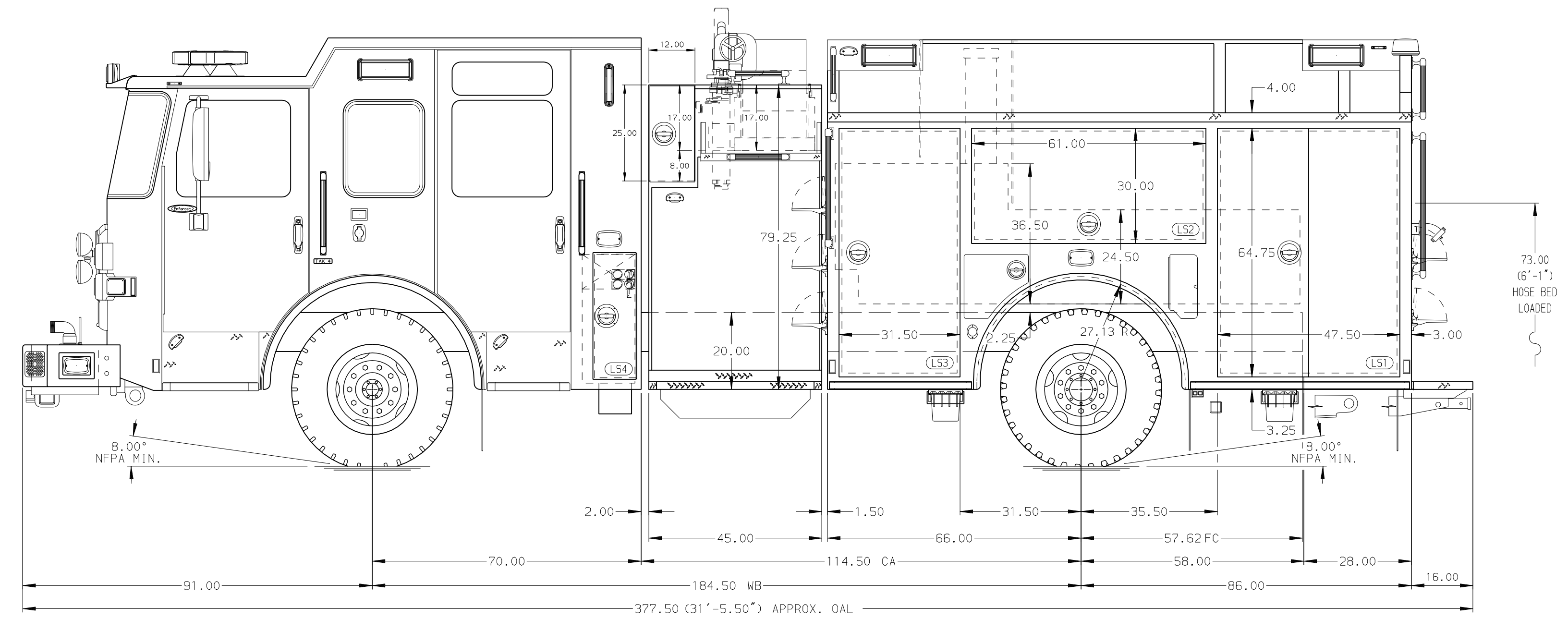


- HOSEBED CAPACITIES**
- ① 200' OF 1.75" D.J. POLY HOSE
 - ② 300' OF 1.75" D.J. POLY HOSE
 - ③ 400' OF 1.75" D.J. POLY HOSE
 - ④ 1200' OF 4.00" D.J. POLY HOSE
 - ⑤ 400' OF 2.50" D.J. POLY HOSE
 - ⑥ 200' OF 1.75" D.J. POLY HOSE



ALUMINUM BODY

NOTE
DIMENSIONS SHOWN ARE APPROXIMATE AND ARE SUBJECT TO MINOR DEVIATIONS AS MAY OCCUR OR BE NECESSARY IN CONSTRUCTION. MINOR DETAILS NOT SHOWN.

CUSTOMER APPROVAL			
APPROVED BY:			
DATE:			
REV	DATE	BY	CH

Pierce MANUFACTURING INC.

TITLE: 2000-D-500P, 152" PUMPER BODY, DELUGE, BOOSTER REEL
RIGHT SIDE LADDER BRACKETS, 45" SIDE CONTROL
FOR: GLASSBORO FIRE DEPARTMENT
FIRE & SAFETY SERVICES, LTD
DWC NO.: 05-0786

JOB NO.	PRELIM
SCALE	1:24
DATE	
DRAWN BY	BST
CHECKED BY	NPA
SHEET SIZE	D
SHEET NO.	1 OF 1