



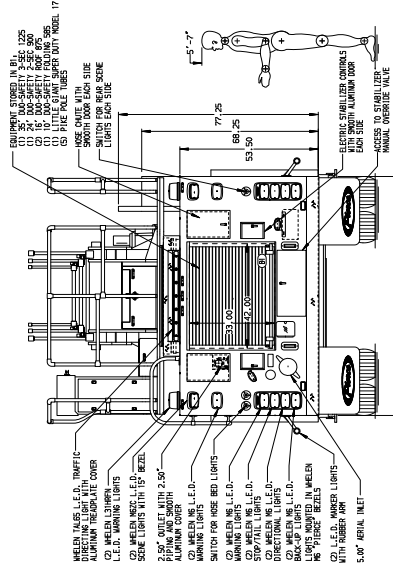
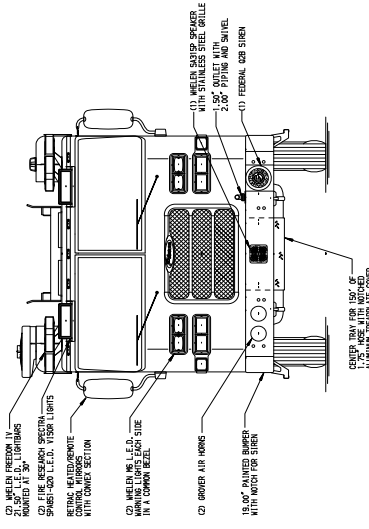
Pierce Arrow XT 75' Steel Ladder
City of Bridgeton
Job #36537

FEATURES & SPECIFICATIONS

- Pierce Arrow XT 67" Chassis with a 10" Raised Roof
- Cummins L9 450hp 2021 EPA Compliant Engine
- Allison EVS30000P Automatic Transmission
- TAK-4 Independent Front Suspension
- Waterous CSU 2000 GPM Single Stage Pump
- 500 Gallon Poly Water Tank
- Harrison MCR 10kW Hydraulic Generator
- Delivered in September 2022



FIRE & SAFETY SERVICES, LTD.
South Plainfield, NJ
web: www.f-ss.com · phone: 800-400-8017



ALUMINUM BODY

NOTE
 DIMENSIONS SHOWN ARE APPROXIMATE
 AND ARE SUBJECT TO MINOR VARIATIONS
 AS MAY OCCUR OR BE NECESSARY IN
 CONSTRUCTION.
 MINOR DETAILS NOT SHOWN.

1. SKID PLATE ACCEPTABLE WITH KERNAL SLOPE AND EXACT LOCATED AT DRIVER'S STEP WELL.
2. BATTERY COVER LOCATED WITHIN 10" OF DRIVER'S STEP WELL.
3. BATTERY COVER LOCATED WITHIN 10" OF DRIVER'S STEP WELL.
4. BATTERY COVER LOCATED WITHIN 10" OF DRIVER'S STEP WELL.
5. BATTERY COVER LOCATED WITHIN 10" OF DRIVER'S STEP WELL.
6. BATTERY COVER LOCATED WITHIN 10" OF DRIVER'S STEP WELL.
7. BATTERY COVER LOCATED WITHIN 10" OF DRIVER'S STEP WELL.
8. BATTERY COVER LOCATED WITHIN 10" OF DRIVER'S STEP WELL.
9. BATTERY COVER LOCATED WITHIN 10" OF DRIVER'S STEP WELL.
10. BATTERY COVER LOCATED WITHIN 10" OF DRIVER'S STEP WELL.
11. CIGARETTE RECEPTACLE LOCATED IN COMPARTMENT PER ORDER.
12. CIGARETTE RECEPTACLE LOCATED IN COMPARTMENT PER ORDER.
13. CIGARETTE RECEPTACLE LOCATED IN COMPARTMENT PER ORDER.
14. CIGARETTE RECEPTACLE LOCATED IN COMPARTMENT PER ORDER.
15. CIGARETTE RECEPTACLE LOCATED IN COMPARTMENT PER ORDER.
16. CIGARETTE RECEPTACLE LOCATED IN COMPARTMENT PER ORDER.
17. CIGARETTE RECEPTACLE LOCATED IN COMPARTMENT PER ORDER.
18. CIGARETTE RECEPTACLE LOCATED IN COMPARTMENT PER ORDER.
19. CIGARETTE RECEPTACLE LOCATED IN COMPARTMENT PER ORDER.
20. NO LIMITED RETRACTION OF AIRSIAL DEVICE.
21. AIRSIAL DEVICE LOCATED IN COMPARTMENT PER ORDER.
22. AIRSIAL DEVICE LOCATED IN COMPARTMENT PER ORDER.
23. AIRSIAL DEVICE LOCATED IN COMPARTMENT PER ORDER.
24. AIRSIAL DEVICE LOCATED IN COMPARTMENT PER ORDER.
25. AIRSIAL DEVICE LOCATED IN COMPARTMENT PER ORDER.
26. AIRSIAL DEVICE LOCATED IN COMPARTMENT PER ORDER.
27. AIRSIAL DEVICE LOCATED IN COMPARTMENT PER ORDER.
28. AIRSIAL DEVICE LOCATED IN COMPARTMENT PER ORDER.
29. AIRSIAL DEVICE LOCATED IN COMPARTMENT PER ORDER.
30. AIRSIAL DEVICE LOCATED IN COMPARTMENT PER ORDER.
31. AIRSIAL DEVICE LOCATED IN COMPARTMENT PER ORDER.
32. AIRSIAL DEVICE LOCATED IN COMPARTMENT PER ORDER.
33. AIRSIAL DEVICE LOCATED IN COMPARTMENT PER ORDER.
34. AIRSIAL DEVICE LOCATED IN COMPARTMENT PER ORDER.
35. AIRSIAL DEVICE LOCATED IN COMPARTMENT PER ORDER.
36. AIRSIAL DEVICE LOCATED IN COMPARTMENT PER ORDER.
37. AIRSIAL DEVICE LOCATED IN COMPARTMENT PER ORDER.
38. AIRSIAL DEVICE LOCATED IN COMPARTMENT PER ORDER.
39. AIRSIAL DEVICE LOCATED IN COMPARTMENT PER ORDER.
40. AIRSIAL DEVICE LOCATED IN COMPARTMENT PER ORDER.
41. AIRSIAL DEVICE LOCATED IN COMPARTMENT PER ORDER.
42. AIRSIAL DEVICE LOCATED IN COMPARTMENT PER ORDER.
43. AIRSIAL DEVICE LOCATED IN COMPARTMENT PER ORDER.
44. AIRSIAL DEVICE LOCATED IN COMPARTMENT PER ORDER.
45. AIRSIAL DEVICE LOCATED IN COMPARTMENT PER ORDER.
46. AIRSIAL DEVICE LOCATED IN COMPARTMENT PER ORDER.
47. AIRSIAL DEVICE LOCATED IN COMPARTMENT PER ORDER.
48. AIRSIAL DEVICE LOCATED IN COMPARTMENT PER ORDER.
49. AIRSIAL DEVICE LOCATED IN COMPARTMENT PER ORDER.
50. AIRSIAL DEVICE LOCATED IN COMPARTMENT PER ORDER.
51. AIRSIAL DEVICE LOCATED IN COMPARTMENT PER ORDER.
52. AIRSIAL DEVICE LOCATED IN COMPARTMENT PER ORDER.
53. AIRSIAL DEVICE LOCATED IN COMPARTMENT PER ORDER.
54. AIRSIAL DEVICE LOCATED IN COMPARTMENT PER ORDER.
55. AIRSIAL DEVICE LOCATED IN COMPARTMENT PER ORDER.
56. AIRSIAL DEVICE LOCATED IN COMPARTMENT PER ORDER.
57. AIRSIAL DEVICE LOCATED IN COMPARTMENT PER ORDER.
58. AIRSIAL DEVICE LOCATED IN COMPARTMENT PER ORDER.
59. AIRSIAL DEVICE LOCATED IN COMPARTMENT PER ORDER.
60. AIRSIAL DEVICE LOCATED IN COMPARTMENT PER ORDER.
61. AIRSIAL DEVICE LOCATED IN COMPARTMENT PER ORDER.
62. AIRSIAL DEVICE LOCATED IN COMPARTMENT PER ORDER.
63. AIRSIAL DEVICE LOCATED IN COMPARTMENT PER ORDER.
64. AIRSIAL DEVICE LOCATED IN COMPARTMENT PER ORDER.
65. AIRSIAL DEVICE LOCATED IN COMPARTMENT PER ORDER.
66. AIRSIAL DEVICE LOCATED IN COMPARTMENT PER ORDER.
67. AIRSIAL DEVICE LOCATED IN COMPARTMENT PER ORDER.
68. AIRSIAL DEVICE LOCATED IN COMPARTMENT PER ORDER.
69. AIRSIAL DEVICE LOCATED IN COMPARTMENT PER ORDER.
70. AIRSIAL DEVICE LOCATED IN COMPARTMENT PER ORDER.
71. AIRSIAL DEVICE LOCATED IN COMPARTMENT PER ORDER.
72. AIRSIAL DEVICE LOCATED IN COMPARTMENT PER ORDER.
73. AIRSIAL DEVICE LOCATED IN COMPARTMENT PER ORDER.
74. AIRSIAL DEVICE LOCATED IN COMPARTMENT PER ORDER.
75. AIRSIAL DEVICE LOCATED IN COMPARTMENT PER ORDER.
76. AIRSIAL DEVICE LOCATED IN COMPARTMENT PER ORDER.
77. AIRSIAL DEVICE LOCATED IN COMPARTMENT PER ORDER.
78. AIRSIAL DEVICE LOCATED IN COMPARTMENT PER ORDER.
79. AIRSIAL DEVICE LOCATED IN COMPARTMENT PER ORDER.
80. AIRSIAL DEVICE LOCATED IN COMPARTMENT PER ORDER.
81. AIRSIAL DEVICE LOCATED IN COMPARTMENT PER ORDER.
82. AIRSIAL DEVICE LOCATED IN COMPARTMENT PER ORDER.
83. AIRSIAL DEVICE LOCATED IN COMPARTMENT PER ORDER.
84. AIRSIAL DEVICE LOCATED IN COMPARTMENT PER ORDER.
85. AIRSIAL DEVICE LOCATED IN COMPARTMENT PER ORDER.
86. AIRSIAL DEVICE LOCATED IN COMPARTMENT PER ORDER.
87. AIRSIAL DEVICE LOCATED IN COMPARTMENT PER ORDER.
88. AIRSIAL DEVICE LOCATED IN COMPARTMENT PER ORDER.
89. AIRSIAL DEVICE LOCATED IN COMPARTMENT PER ORDER.
90. AIRSIAL DEVICE LOCATED IN COMPARTMENT PER ORDER.
91. AIRSIAL DEVICE LOCATED IN COMPARTMENT PER ORDER.
92. AIRSIAL DEVICE LOCATED IN COMPARTMENT PER ORDER.
93. AIRSIAL DEVICE LOCATED IN COMPARTMENT PER ORDER.
94. AIRSIAL DEVICE LOCATED IN COMPARTMENT PER ORDER.
95. AIRSIAL DEVICE LOCATED IN COMPARTMENT PER ORDER.
96. AIRSIAL DEVICE LOCATED IN COMPARTMENT PER ORDER.
97. AIRSIAL DEVICE LOCATED IN COMPARTMENT PER ORDER.
98. AIRSIAL DEVICE LOCATED IN COMPARTMENT PER ORDER.
99. AIRSIAL DEVICE LOCATED IN COMPARTMENT PER ORDER.
100. AIRSIAL DEVICE LOCATED IN COMPARTMENT PER ORDER.

5.00"
106.00"
54.00"
104.00"
53.00"
67.00"
88.25"
426.75 LBS ± 4.75 TYPICAL, GAL

MANUFACTURING INC.

75" HSL ALUMINUM LADDER AND BODY ASSEMBLY
500 GALLON WATER TANK
CITY OF BRIDGE TON
FOR BRIDGE TON, NEW JERSEY
DWG. NO. 36537AD
SHEET NO. 1 OF 1

JOB NO. 36537
DATE 10/22/21
SCALE 1/4" = 1'
DRAWN BY SHU
CHECKED BY ZCH
SHEET NO. 1 OF 1

View File Created 18-JUN-2022 09:42:13