

B.R.A.T.[®]
BRUSH RAPID ATTACK TRUCK



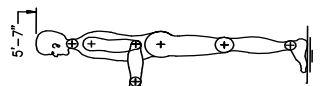
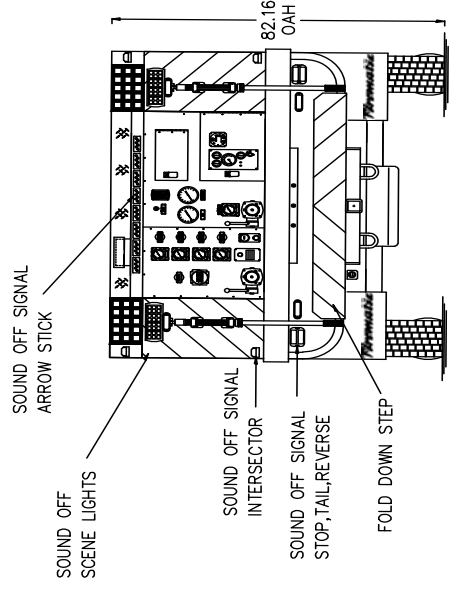
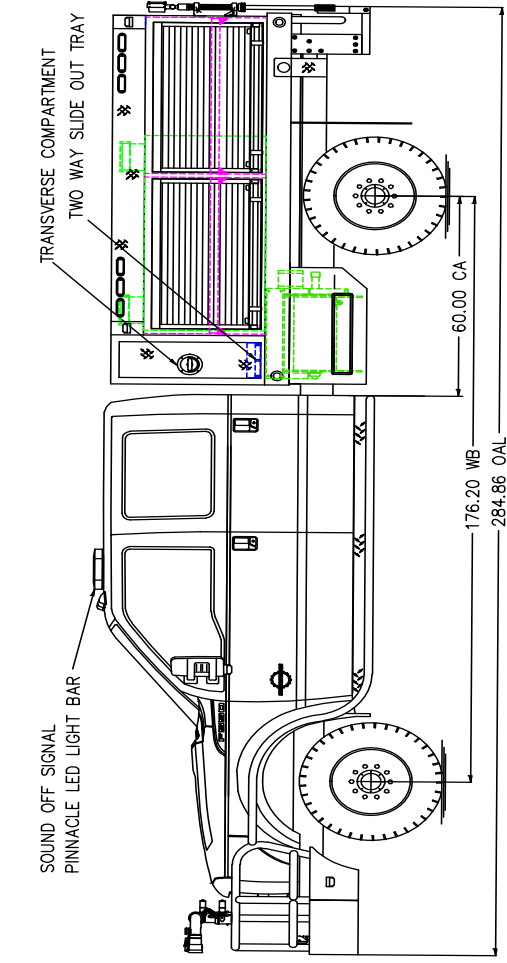
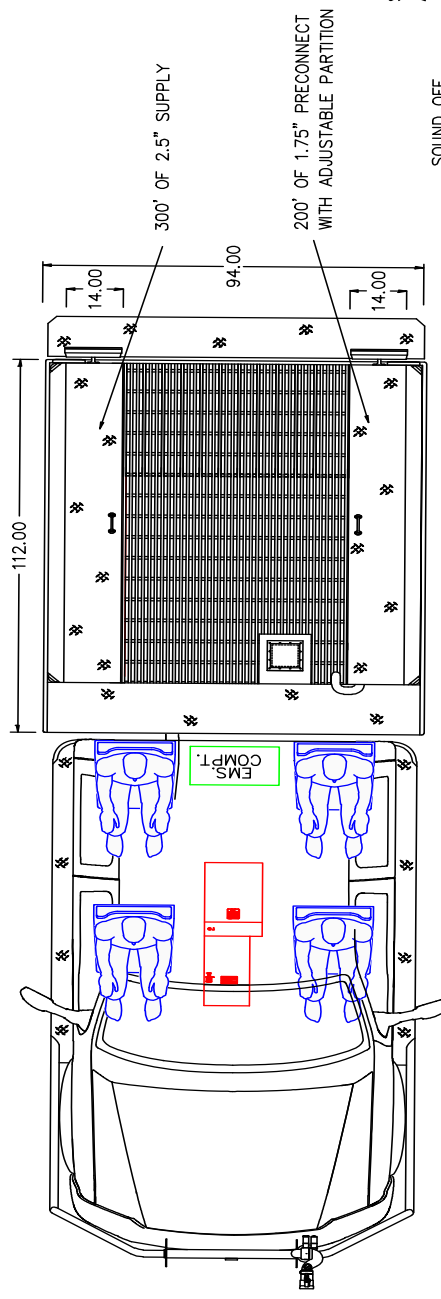
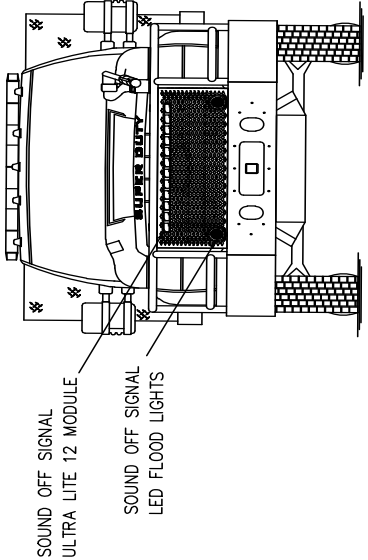
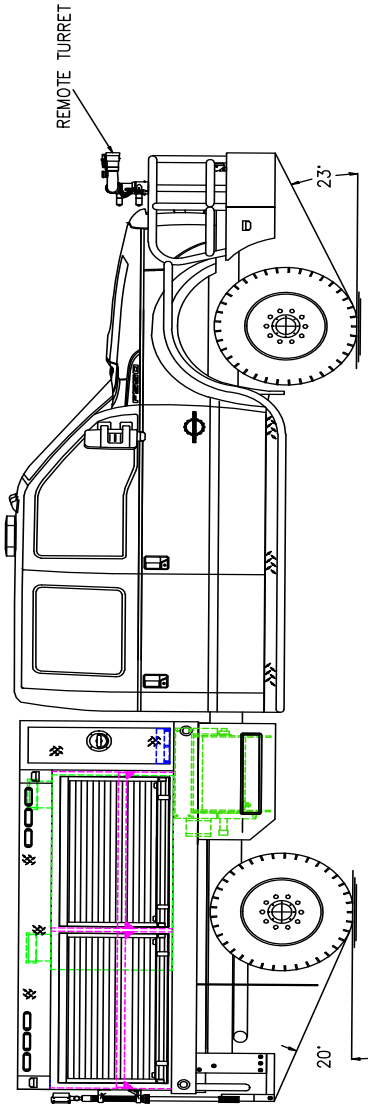
Firematic Ford F-550 4x4 Rally BRAT
Wayne Township/Community Fire Co. 1
Job #B11100WAY

FEATURES & SPECIFICATIONS

- Ford F-550 4x4 4-Door Chassis
- Ford PowerStroke Diesel Engine
- Firematic Alum. Deck Plate with Diamondplate Compt. with ROM doors
- Hale 30FS 500 GPM PTO Pump
- 300 Gallons Poly Water Tank
- Rear 2.5" discharge, One (1) preconnect & Two (2) Hose Reels
- Front Mounted Elkhart Sidewinder Remote Controlled Gun
- Delivered February 2014



FIRE & SAFETY SERVICES, LTD.
South Plainfield, NJ
web: www.f-ss.com · phone: 800-400-8017



Firematic MANUFACTURING		JOB NO. 2180
RALLY 550 WILDLAND PUMPER		DATE APR 23, 2013
WAYNE FIRE CO. #1		CHASSIS DATA FORD F-550 CREW CAB
WAYNE N.J.		DRAWN BY K. ZIMMERLY
		APPROVED BY D. HORTON
		SHEET NO. 1 / 1

300 POLY TANK
75 HP 350 GPM. HALE PUMP
TOYO TIRE PACKAGE PACKAGE

NOTE
THIS DRAWING IS CONCEPTUAL AND IS NOT AN EXACT REPRESENTATION OF THE TRUCK DRAWN DIMENSIONS SHOWN ARE APPROXIMATE AND ARE SUBJECT TO VARIATION AS MAY OCCUR OR BE NECESSARY IN CONSTRUCTION. SOME DETAILS NOT SHOWN.