



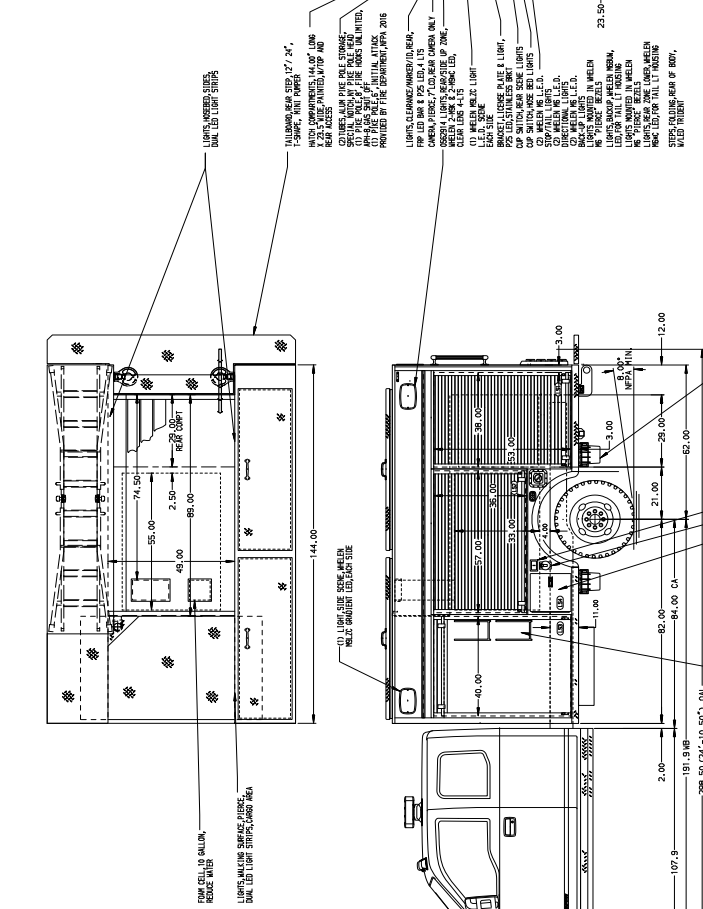
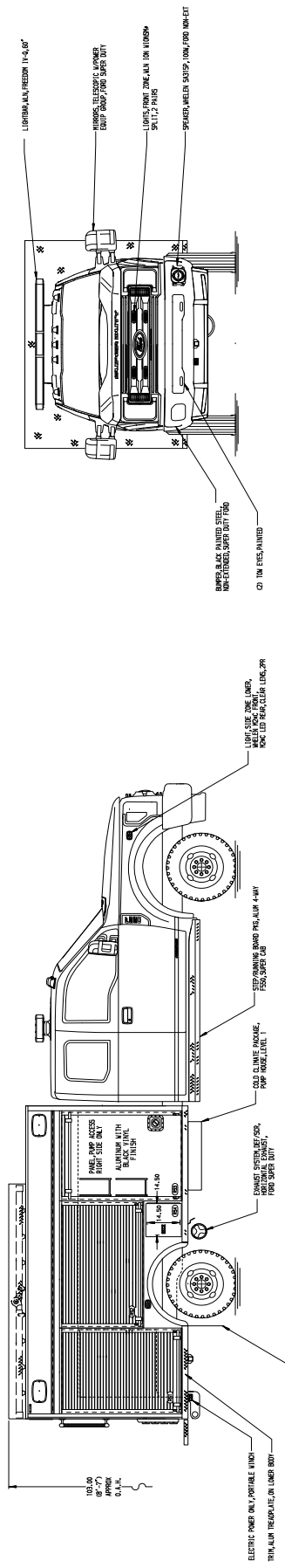
Pierce Ford Mini-Pumper
Hillsborough Fire District
Job #35390

FEATURES & SPECIFICATIONS

- Ford F-550 Super Duty with Extended Cab
- Ford V8 Diesel 6.7L Powerstroke 330hp Engine
- Ford TorqShift 10 Speed Automatic Transmission
- Ford 4x4 suspension
- Waterous CXC20 1500 GPM Single Stage Pump
- 250 Gallon Poly Water Tank
- 10 Gallon Foam Cell for External Foam System
- Delivered in October 2021



FIRE & SAFETY SERVICES, LTD.
South Plainfield, NJ
web: www.f-ss.com · phone: 800-400-8017



JOB NO.	DATE	SCALE
35390	10/24	1:24
DRAWN BY		
R.H.U.		
CHECKED BY		
R.M.I.		
SHEET NO.		
1 OF 1		
SHEET SIZE		
D		

CHG.	DATE	BY	CHK'D	DESCRIPTION
1		R.H.U.		ISSUED
2		R.H.U.		REVISED

TITLE	DATE	BY	CHK'D	DESCRIPTION
1500-D-2406 WATER, 106 FOAM, 84\"/>				

MANUFACTURING INC.
BRANDTOWN, FLORIDA

Pumps

1500-D-2406 WATER, 106 FOAM, 84\"/>

ALUMINUM BODY

NOTE: DIMENSIONS SHOWN ARE APPROXIMATE AND ARE SUBJECT TO MINOR DEVIATIONS AS MAY OCCUR OR BE NECESSARY IN CONSTRUCTION. MINOR DETAILS NOT SHOWN.

FILE NO. 11-12-87