



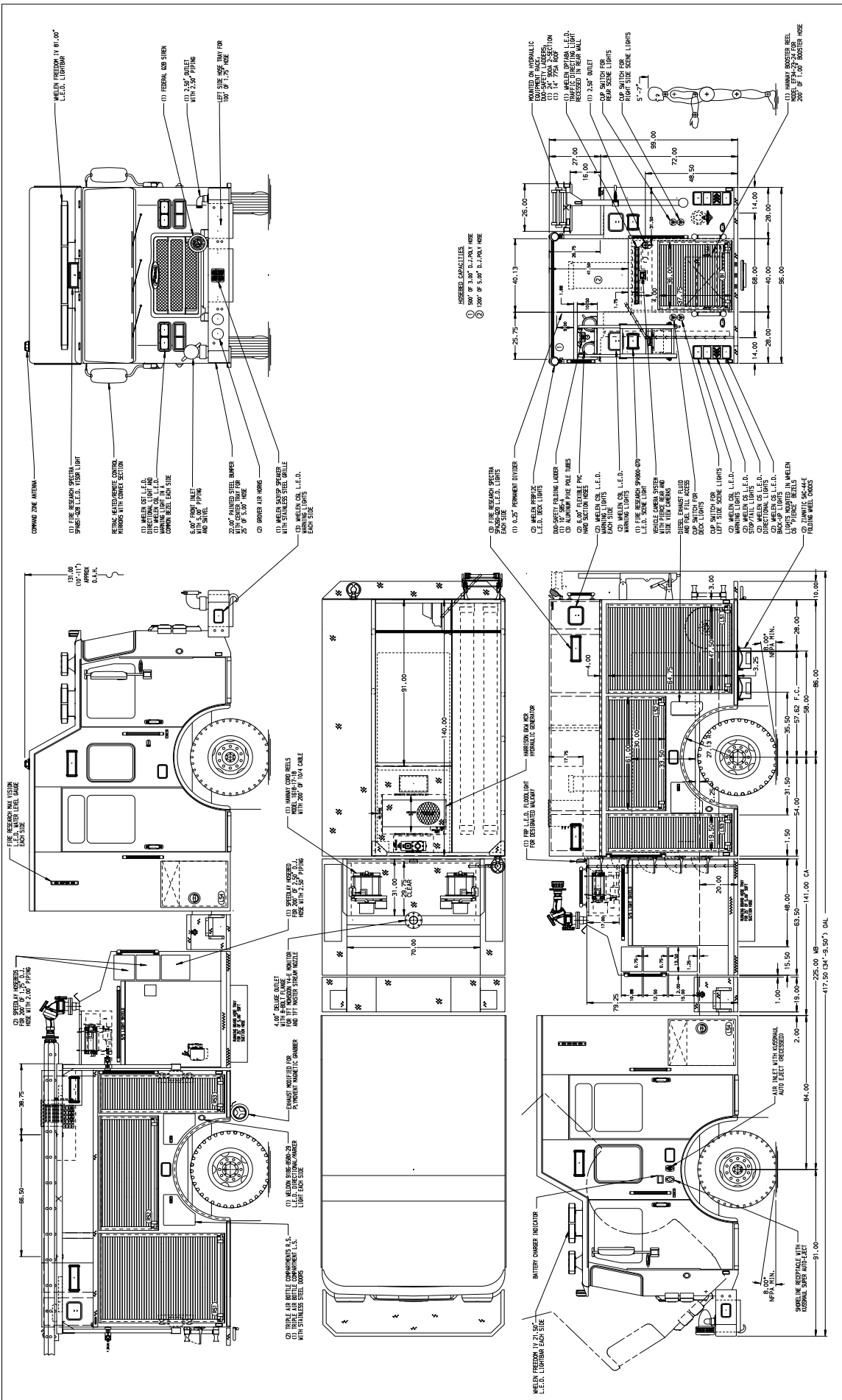
Pierce Enforcer Pumper
Aberdeen Fire Dist. 2/Cliffwood Fire Co.
Job #35202

FEATURES & SPECIFICATIONS

- Pierce Enforcer 84" Chassis with a 24" Raised Roof
- Cummins L9 450hp 2017 EPA compliant Engine
- Allison EVS3000PR Automatic Transmission
- TAK-4 Independent Front Suspension
- Hale QMAX 2000 GPM Single Stage Pump
- 500 Gallon Poly Water Tank
- Harrison MCR 6kw Hydraulic Generator
- Delivered in May 2021



FIRE & SAFETY SERVICES, LTD.
South Plainfield, NJ
web: www.f-ss.com · phone: 800-400-8017



JOB NO. 35202		DATE	
SCALE	11/24	DATE	21/AUG/20
DRAWN BY	DUU	CHECKED BY	DUU
TITLE: 2000-D-500, 140" BODY, TOP MOUNT, SPEEDLAYS DELUGE, HYDRAULIC LADDER RACK, GENERATOR			
FOR: ABERDEEN FIRE DISTRICT #2			
MODEL: PIERCE			
DWG NO. 35202AD			
SHEET NO. 1 OF 1			

ALUMINUM BODY

MAXIMUM O.A.H. 417.50"

MAXIMUM O.A.H. 132.00"

NOTE:

1. DIMENSIONS SHOWN ARE APPROXIMATE AND ARE SUBJECT TO MINOR VARIATIONS AS MAY OCCUR OR BE NECESSARY IN CONSTRUCTION. MINOR DETAILS NOT SHOWN.
2. BODY PANELS TO BE SUPPLIED BY CUSTOMER.
3. THE FULL INTERIOR SURFACE SHALL BE FINISHED IN ALL COMPARTMENTS PER ORDER.
4. ONE (1) DOOR IN EACH COMPARTMENT IS TO BE LOCATED IN COMPARTMENT PER ORDER.
5. ONE (1) DOOR IN EACH COMPARTMENT IS TO BE LOCATED IN COMPARTMENT PER ORDER.
6. ONE (1) DOOR IN EACH COMPARTMENT IS TO BE LOCATED IN COMPARTMENT PER ORDER.
7. ONE (1) DOOR IN EACH COMPARTMENT IS TO BE LOCATED IN COMPARTMENT PER ORDER.
8. CIRCUIT BREAKER PANEL IN COMPARTMENT 13.