



Pierce Ford F-550 Emergency Services Unit  
New Jersey Transit/New Jersey Transit Police Department  
Job #34703-02

FEATURES & SPECIFICATIONS

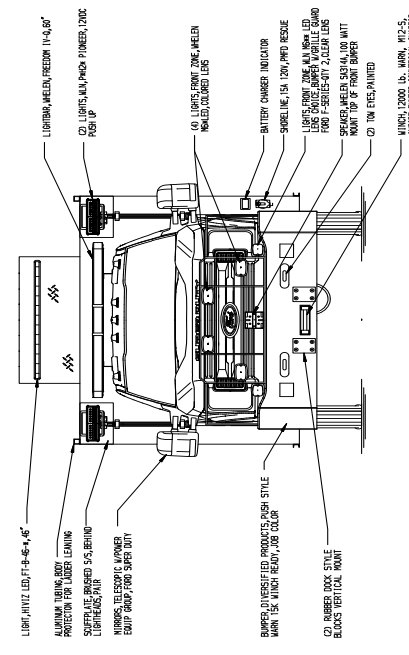
- Ford F-550 4x4 Super Duty Extended Cab
- Ford V8 6.7L PowerStroke Diesel Engine
- Ford Super Duty TorqShift 10-Speed Automatic Transmission
- Diversified Products Push Style bumper w/Warn Winch
- 10' Rescue Body with Lap Style Doors
- Delivered: April 2021



**FIRE & SAFETY SERVICES, LTD.**

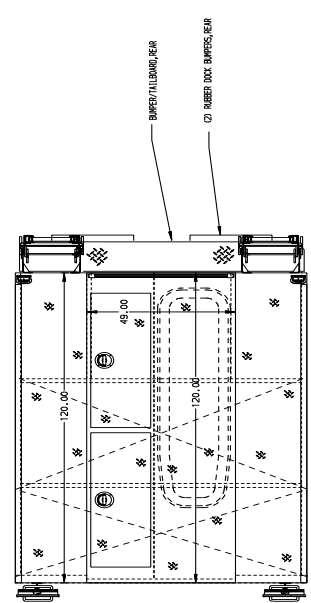
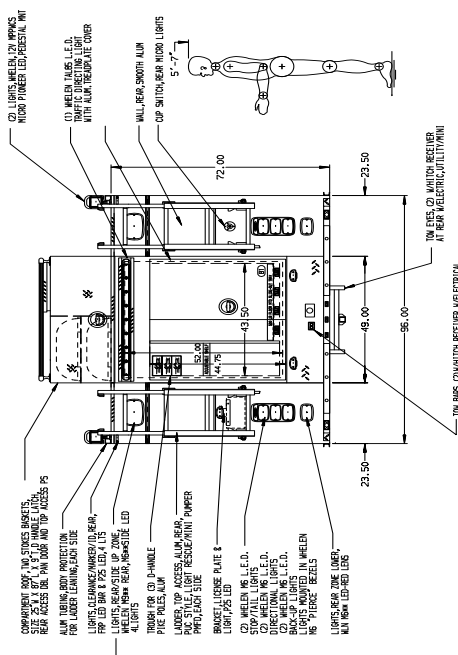
South Plainfield, NJ

web: [www.f-ss.com](http://www.f-ss.com) · phone: 800-400-8017



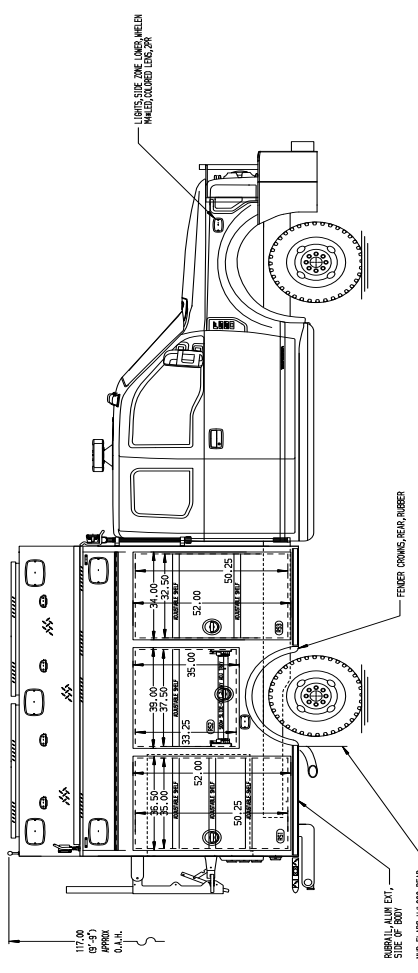
**REAR COMPARTMENT B1 CONTAINS THE FOLLOWING:**

- COMPARTMENT B1 CONTAINS:
  - (1) SHELF, ADJUSTABLE, SOLID CAP, STD. DEPTH COMP.
  - (1) SHELF, ADJUSTABLE, SOLID CAP, TRANSVERSE COMP.
  - (1) COMPARTMENT DIVIDER, VERTICAL.



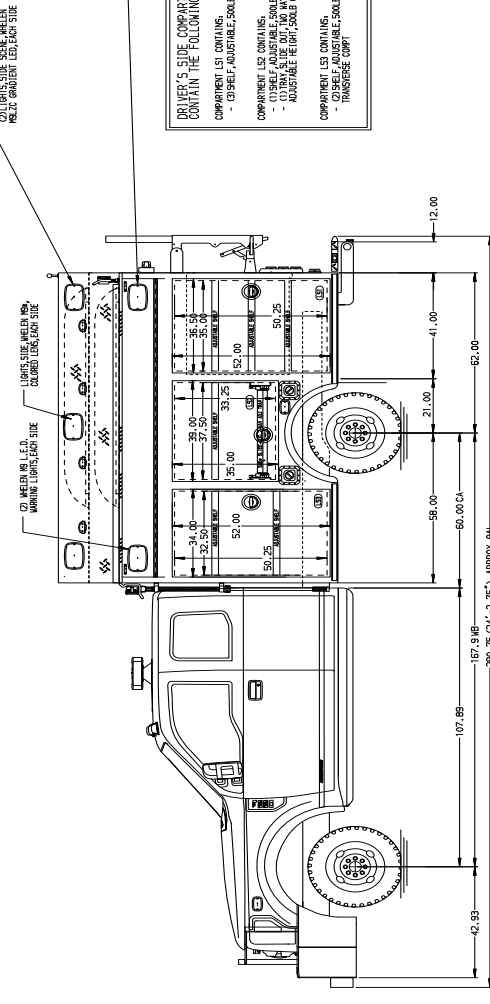
**DRIVER'S SIDE COMPARTMENTS CONTAIN THE FOLLOWING:**

- COMPARTMENT L18 CONTAINS:
  - (1) SHELF, ADJUSTABLE, SOLID CAP, STD. DEPTH COMP.
- COMPARTMENT L19 CONTAINS:
  - (1) SHELF, ADJUSTABLE, SOLID CAP, TRANSVERSE COMP.
  - (1) TRANSVERSE COMP.
- COMPARTMENT L20 CONTAINS:
  - (1) SHELF, ADJUSTABLE, SOLID CAP, TRANSVERSE COMP.
  - (1) TRANSVERSE COMP.



**PASSENGER'S SIDE COMPARTMENTS CONTAIN THE FOLLOWING:**

- COMPARTMENT R11 CONTAINS:
  - (1) SHELF, ADJUSTABLE, SOLID CAP, STD. DEPTH COMP.
- COMPARTMENT R12 CONTAINS:
  - (1) SHELF, ADJUSTABLE, SOLID CAP, TRANSVERSE COMP.
  - (1) TRANSVERSE COMP.
- COMPARTMENT R13 CONTAINS:
  - (1) SHELF, ADJUSTABLE, SOLID CAP, 1/2\"/>



**Pierce** MANUFACTURING INC.

BRUNTON, FLORIDA

JOB NO. 34703

SCALE 1:1.24

DATE 22JUL20

DRAWN BY JLA

CHECKED BY RMT

CHECKED BY RMT

CHECKED BY RMT

CHECKED BY RMT

SHEET NO. 1 OF 1

D

TITLE: PMD RESCUE, 60 CA NON-MALIKIN

FOR: NEW JERSEY TRANSIT

MODEL: 130A020 JLA RMT

REV. DATE 15AUG20 1550 4X/4

NOTE:  
 DIMENSIONS SHOWN ARE APPROXIMATE AND ARE SUBJECT TO MINOR DEVIATIONS AS MAY OCCUR OR BE NECESSARY IN CONSTRUCTION.  
 MINOR DETAILS NOT SHOWN.