



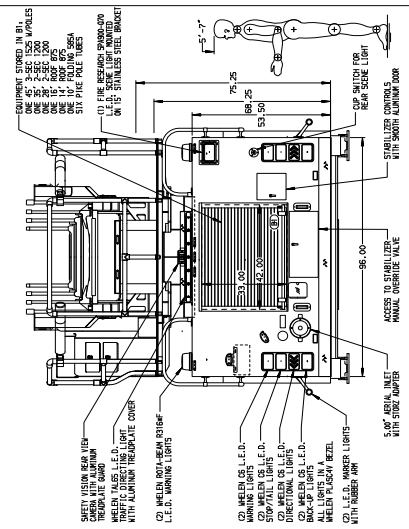
Pierce Enforcer 107' Ascendant Tandem Axle Steel Ladder
City of Vineland
Job #35058

FEATURES & SPECIFICATIONS

- Pierce Enforcer 70" Chassis with a Flat Roof
- Cummins L9 450hp 2017 EPA compliant Engine
- Allison EVS30000P Automatic Transmission
- Dana Front and Meritor Rear Axles
- Hale QMAX 2000 GPM Single Stage Pump
- 300 Gallon Poly Water Tank
- Delivered in March 2021



FIRE & SAFETY SERVICES, LTD.
South Plainfield, NJ
web: www.f-ss.com · phone: 800-400-8017



(MAXIMUM O.A.H. 140.00")

ALUMINUM BODY

MAXIMUM O. A. H. 140.00"

Pierce

MANUFACTURING INC.

JOB NO.	SCALE	DATE	DRAWN BY	CHECKED BY	SHEET NO.	SHEET TOTAL
35058	1:24		SHU		1	1

CHASSIS DATA	P/N	REV	DATE	BY	ENFORCER	NO.
TITLE 107" ASCENDANT AERIAL LADDER AND BODY ASSEMBLY	300 GALLON WATER TANK					
CITY OF VINELAND	PIERCE					
FOR VINELAND, NEW JERSEY						
MODEL	DWG					
REV	DATE	BY				
05JAN00						

35058AD

NOTE

DIMENSIONS SHOWN ARE APPROXIMATE

AND ARE SUBJECT TO MINOR VARIATIONS

AS MAY OCCUR OR BE NECESSARY IN

CONSTRUCTION.

MINOR DETAILS NOT SHOWN.

View File Created 21-JUL-2020 13:00:47