



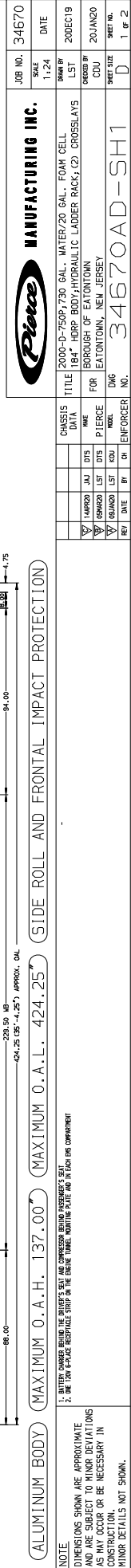
Pierce Enforcer Heavy Duty Rescue Pumper
Borough of Eatontown
Job #34670

FEATURES & SPECIFICATIONS

- Pierce Enforcer 84" Chassis with a 10" Raised Roof
- Cummins L9 450hp 2017 EPA compliant Engine
- Allison EVS3000P Automatic Transmission
- TAK-4 Independent Front Suspension
- Waterous CSU 2000 GPM Single Stage Pump
- 750 Gallon "New York Style" Poly Water Tank
- Husky 3 Single Agent Foam System
- Harrison MPC 10kw Hydraulic Generator
- Delivered in October 2020



FIRE & SAFETY SERVICES, LTD.
South Plainfield, NJ
web: www.f-ss.com · phone: 800-400-8017



DIMENSIONS SHOWN ARE APPROXIMATE AND ARE SUBJECT TO MINOR DEVIATIONS AS MAY OCCUR OR BE NECESSARY IN CONSTRUCTION. MINOR DETAILS NOT SHOWN.

View File Created 16-APR-2020 10:55:56