



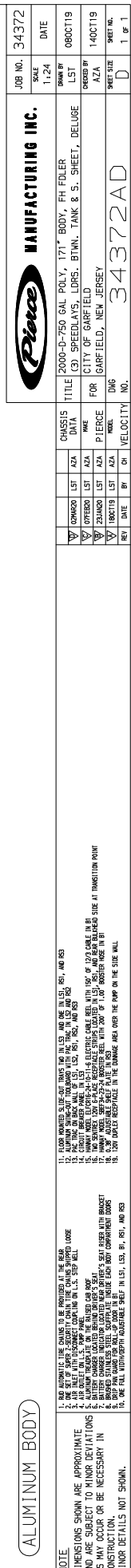
Pierce Velocity Top Mount Pumper
City of Garfield
Job #34372

FEATURES & SPECIFICATIONS

- Pierce Velocity 84" Chassis with a 10" Raised Roof
- Detroit Diesel DD13 525hp 2016 EPA compliant Engine
- Allison EVS4000P Automatic Transmission
- Pierce TAK-4 Independent Front Suspension
- Hale QTWO 2000 GPM Two Stage Pump
- 7500 Gallon Poly Water Tank
- Harrison MCR 10kw Hydraulic Generator
- Delivered in September 2020



FIRE & SAFETY SERVICES, LTD.
South Plainfield, NJ
web: www.f-ss.com · phone: 800-400-8017

[illegible]