



Pierce Enforcer Tanker

Hillsborough Township/Hillsborough Vol. Fire Co. #2

Job #34117

FEATURES & SPECIFICATIONS

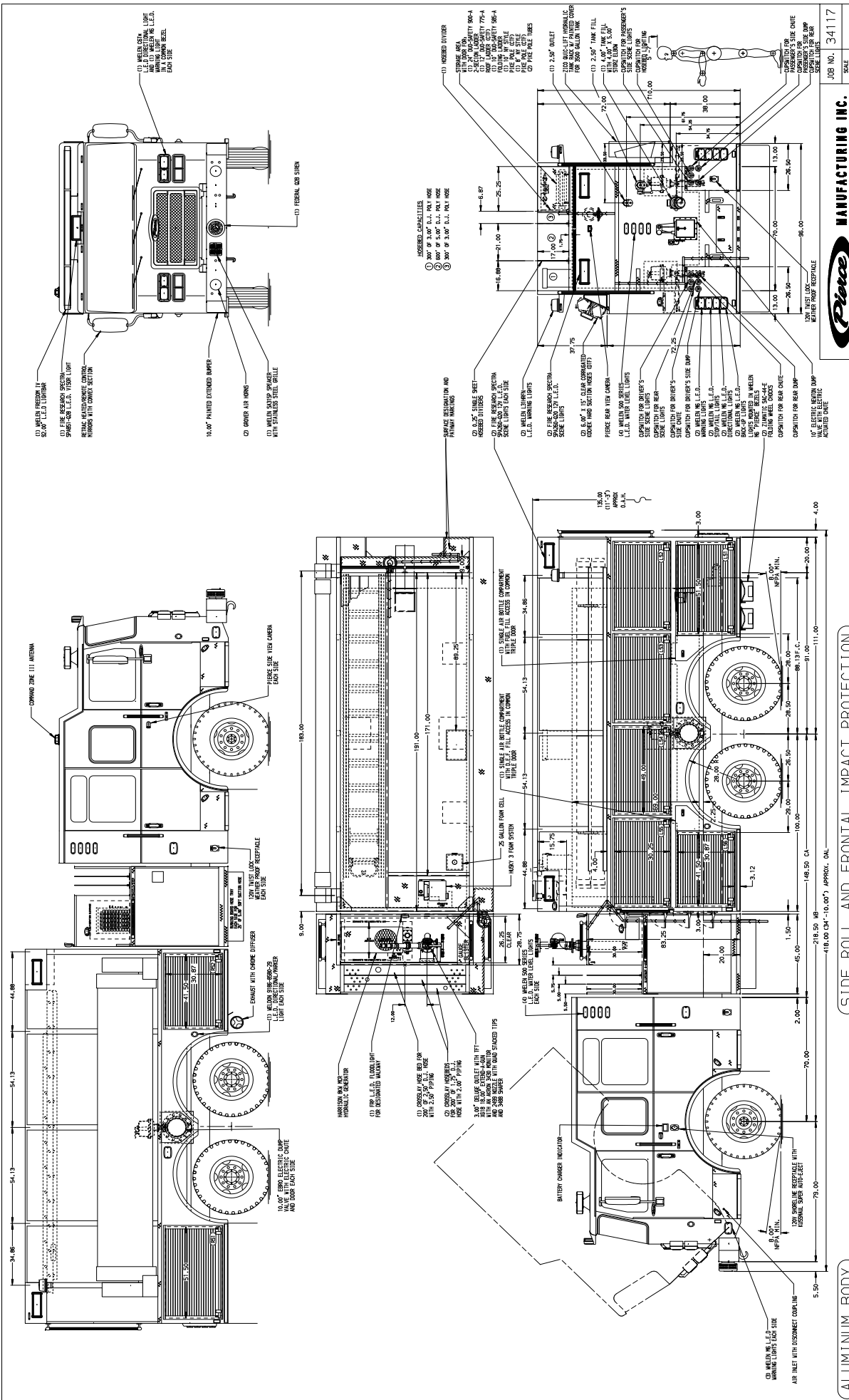
- Pierce Enforcer 70" Chassis with a 10" Raised Roof
- Detroit Diesel DD13 505hp 2016 EPA compliant Engine
- Allison EVS4000P Automatic Transmission
- Pierce TAK-4 Independent Front Suspension
- Waterous CSU 2000 GPM Single Stage Pump
- 2900 Gallon Poly Water Tank
- Husky 3 Single Agent Foam System
- Delivered in April 2020



FIRE & SAFETY SERVICES, LTD.

South Plainfield, NJ

web: www.f-ss.com · phone: 800-400-8017



MANUFACTURING INC.

2000-D-2925P, 2900 WATER/25 GAL. FOAM CELL, GENERATOR 211" TANKER BODY, LADDERS IN HOSE BED, HUSKY 3 FOR HILLSBOROUGH FIRE DISTRICT # 1

34117AD

JOB NO. 34117

SCALE	DATE	DRWN BY	DATE
1:1	11.24	LSJ	25.0UN19
		LSJ	01.JUL19
		AZA	

CHASSIS DATA

REV	DATE	BY	CHK	ENFORCE	NO.
1					
2					
3					
4					
5					
6					
7					
8					
9					
10					

NOTE:

- BATTERY COMPARTMENT BEHIND THE DRIVER'S SEAT.
- THE ADJUSTABLE BRASS LUMINA BEZEL IS IN USE.
- THE FLOOR MATS ARE IN USE.
- THE 200 GAL HOSE BED IS IN USE.
- THE 25 GAL HOSE BED IS IN USE.
- THE 25 GAL HOSE BED IS IN USE.
- THE 25 GAL HOSE BED IS IN USE.
- THE 25 GAL HOSE BED IS IN USE.
- THE 25 GAL HOSE BED IS IN USE.
- THE 25 GAL HOSE BED IS IN USE.

ALUMINUM BODY

SIDE ROLL AND FRONTAL IMPACT PROTECTION

183.00 (Overall length)

171.00 (Wheelbase)

188.00 (Front overhang)

111.00 (Rear overhang)

218.50 (Total length with protection)

118.00 (Total length with protection - approx. OAL)

148.50 (Total length with protection - approx. OAL)

20.00 (Wheel offset)

15.75 (Wheel offset)

10.00 (Wheel offset)

8.00 (Wheel offset)

7.00 (Wheel offset)

5.50 (Wheel offset)