



Pierce Enforcer PUC Pumper  
Borough of Stratford  
Job #31797

FEATURES & SPECIFICATIONS

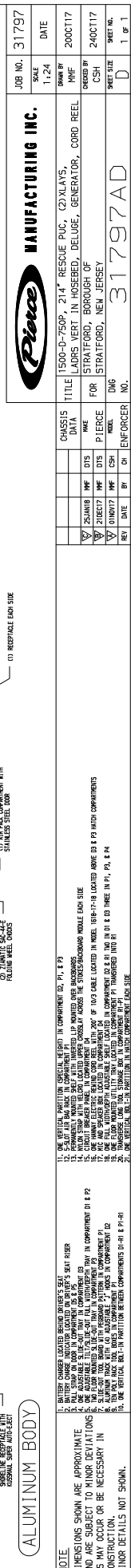
- Pierce Enforcer 70" Chassis with a 10" Raised Roof
- Cummins L9 450hp 2017 EPA compliant Engine
- Allison EVS3000P Automatic Transmission
- TAK-4 Independent Front Suspension
- Pierce PUC 1500 GPM Single Stage Pump
- 750 Gallon Poly Tank
- Harrison MCR 10kw Hydraulic Generator
- Delivered in June 2018



***FIRE & SAFETY SERVICES, LTD.***

South Plainfield, NJ

web: [www.f-ss.com](http://www.f-ss.com) · phone: 800-400-8017



NOTE	<p>1. DIMENSIONS SHOWN ARE APPROXIMATE</p> <p>2. ALL ARE SUBJECT TO MINOR DEVIATIONS</p> <p>3. IF ANY COROR OR BE NECESSARY IN CONSTRUCTION.</p> <p>4. IF ANY DETAILS IS NOT SHOWN.</p>
------	---