



Pierce Ford F550 4x4 Mini-Pumper  
Port Authority of NY & NJ  
Job #31522

FEATURES & SPECIFICATIONS

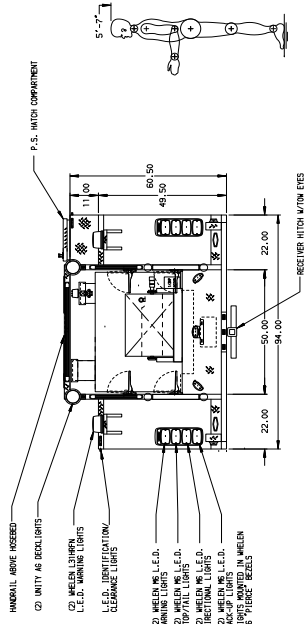
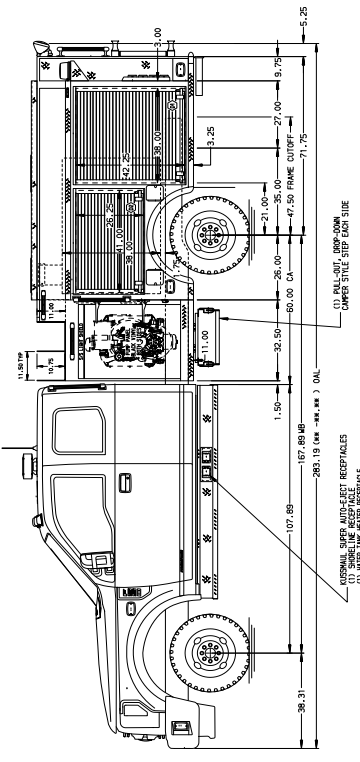
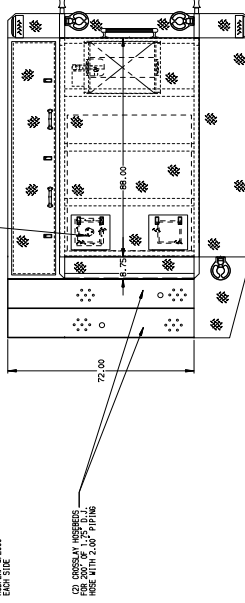
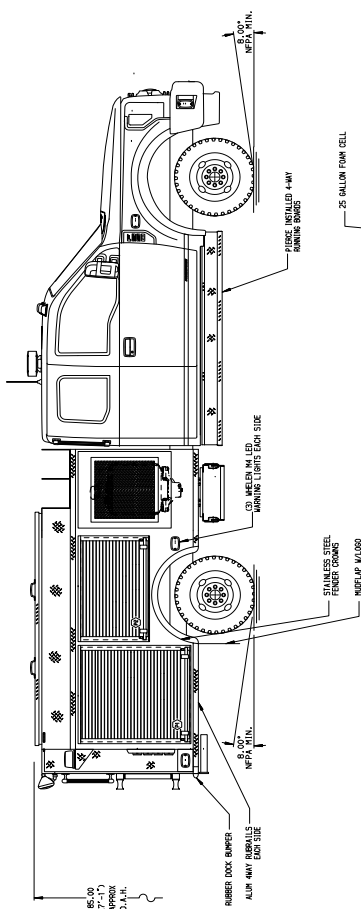
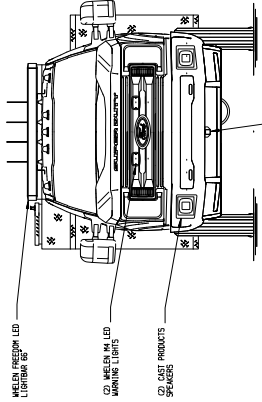
- Ford F550 Super Cab 4x4 Chassis
- Ford PowerStrok V8 6.7L Diesel 330 hp 2017 EPA compliant Engine
- Allison EVS3000P Automatic Transmission
- Odin Crossmount Rebel Power 200 GPM PTO Pump
- 300 Gallon Poly Tank
- FoamProb2002 Foam System
- Odin 70CFM CAFS system
- Delivered in April 2018



***FIRE & SAFETY SERVICES, LTD.***

South Plainfield, NJ

web: [www.f-ss.com](http://www.f-ss.com) · phone: 800-400-8017



**CUSTOMER APPROVAL**

APPROVED BY: \_\_\_\_\_ DATE: \_\_\_\_\_

CHASSIS DATA:

REV	DATE	BY	CH	F-550	NO.
1		DA			
2		DA			
3		DA			
4		DA			
5		DA			
6		DA			

CHASSIS TITLE: 60" MINI

DATE: 29 JUN 17

DESIGNED BY: JDB

DRAWN BY: DDA

CHECKED BY: DDA

MANUFACTURED BY: DDA

DATE: 29 JUN 17

**MANUFACTURING INC.**

31522AD

100 IN CROSSCOUNTRY PUMP, 300 GAL WATER W/25 GAL FOAM

PORT AUTHORITY OF NEW YORK AND NEW JERSEY

FORD

31522AD

ALUMINUM BODY

MAXIMUM O. A. H. 85.00"

NOTE: DIMENSIONS SHOWN ARE APPROXIMATE AND ARE SUBJECT TO MINOR DEVIATIONS AS MAY OCCUR OR BE NECESSARY IN CONSTRUCTION. DIMENSIONS NOT SHOWN. DIMENSIONS NOT SHOWN.