



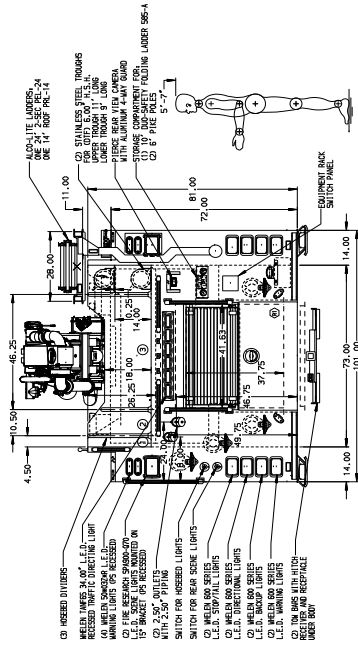
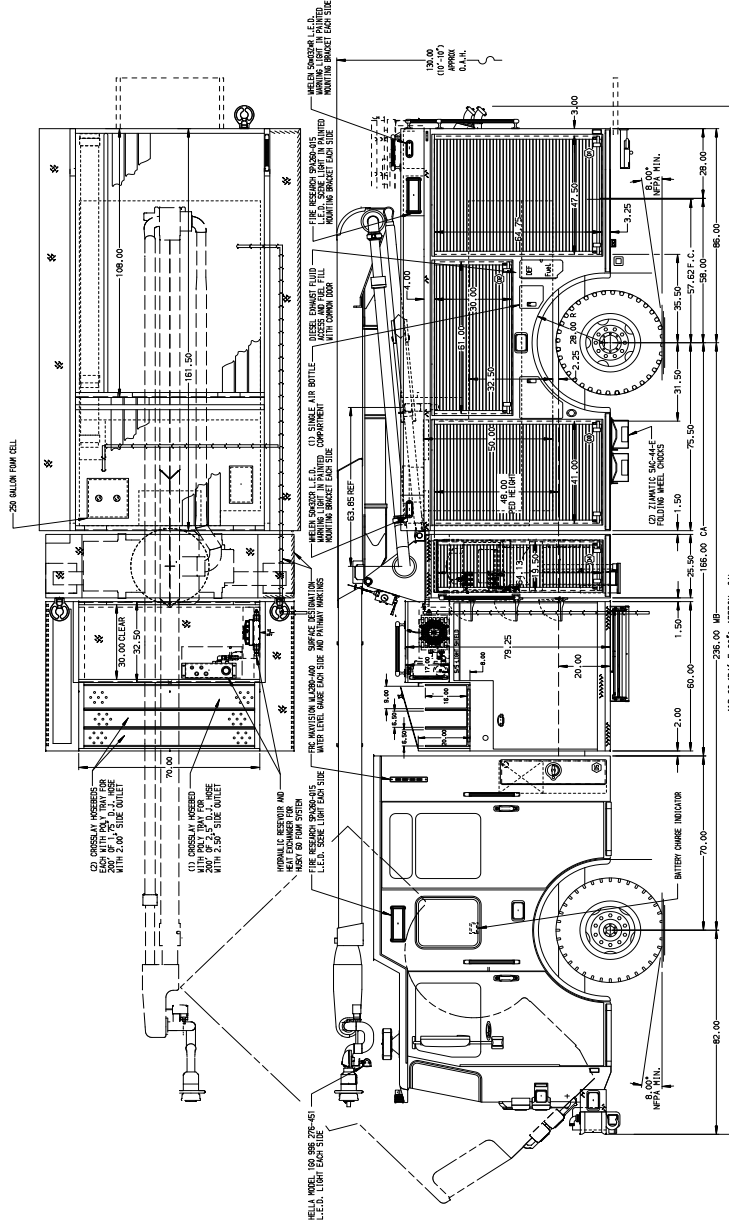
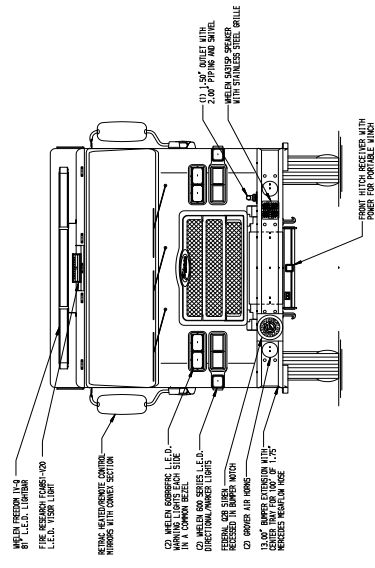
Pierce Enforcer Pumper with 50' Snozzle Device
Town of Phillipsburg
Job #32071

FEATURES & SPECIFICATIONS

- Pierce Enforcer 70" Chassis with a 10" Raised Roof
- Detroit Diesel DD13 470hp 2016 EPA compliant Engine
- Allison EVS4500P Automatic Transmission
- Dana Front and Rear Axles
- Waterous CSU 2000 GPM Single Stage Pump
- 750 Gallon Poly Water Tank and 250 Foam Tank
- Husky 60 Single Agent Industrial Foam System
- Hercules 250cfm CAFS System
- Delivered in February 2019



FIRE & SAFETY SERVICES, LTD.
South Plainfield, NJ
web: www.f-ss.com · phone: 800-400-8017



HOSEBED CAPACITIES

①	200' OF 1.75" D.J. HOSE
②	300' OF 2.50" D.J. HOSE
③	1500' OF 5.00" MERCEDES

[illegible]