



Pierce Velocity Top Mount Pumper  
Bridgewater Fire Dist. 1/Martinsville Fire Co.  
Job #31588

FEATURES & SPECIFICATIONS

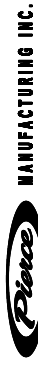
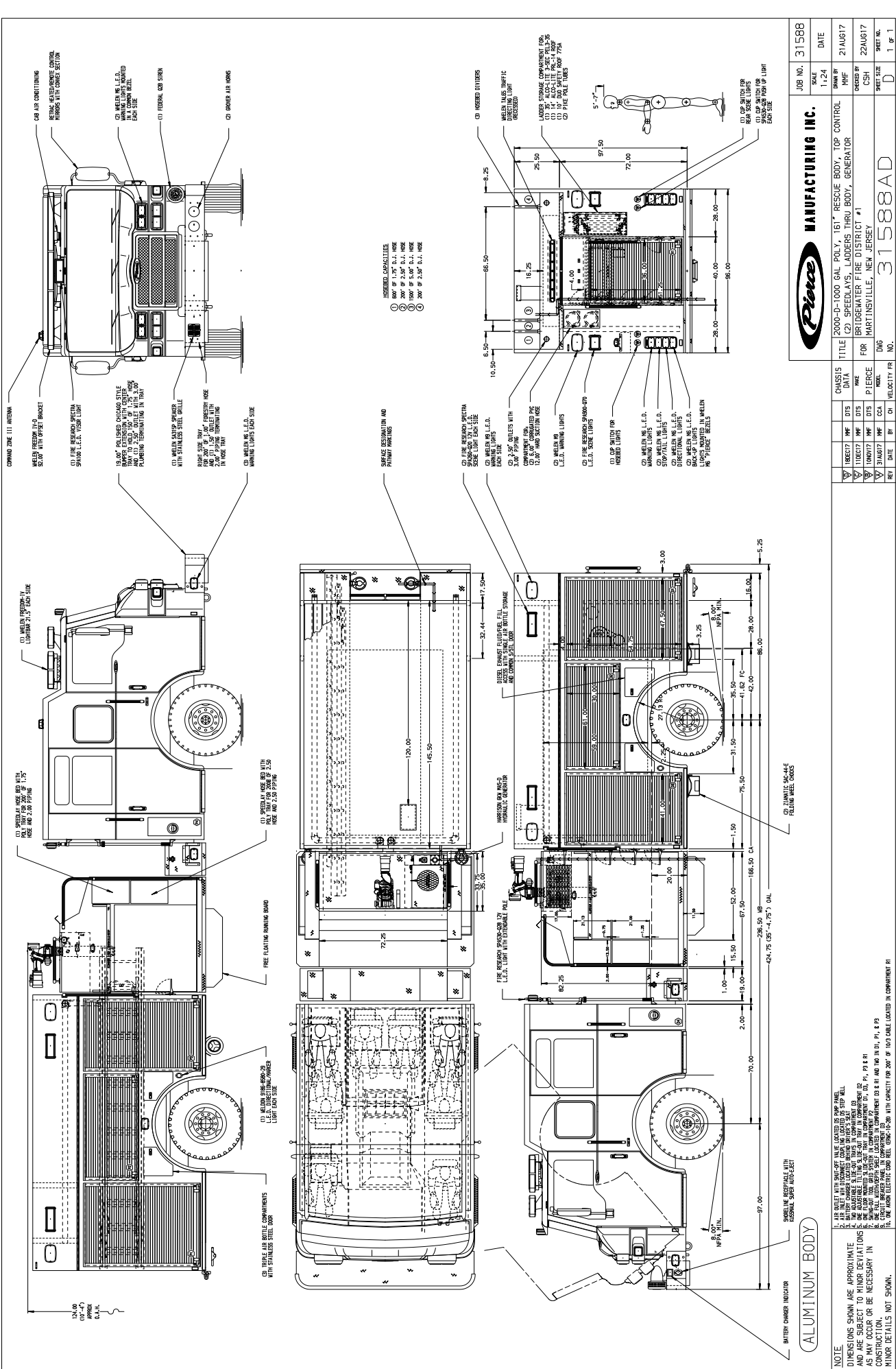
- Pierce Velocity 70" Chassis with a 10" Raised Roof
- Detroit Diesel DD13 525hp 2016 EPA compliant Engine
- Allison EVS4500P Automatic Transmission
- TAK-4 Independent Front Suspension
- Waterous CMU 2000 GPM Two Stage Pump
- 1000 Gallon Poly Tank
- Harrison MAS 6kw Hydraulic Generator
- Delivered in May 2018



***FIRE & SAFETY SERVICES, LTD.***

South Plainfield, NJ

web: [www.f-ss.com](http://www.f-ss.com) · phone: 800-400-8017



JOB NO. 31588  
 SCALE 1:24  
 DATE 21 AUG 17  
 DRAWN BY CSH  
 CHECKED BY CSH  
 SHEET NO. 1 OF 1

MANUFACTURING INC.  
 TITLE 2000-D-1000 GAL POLY, 161' RESCUE BODY, TOP CONTROL  
 DATA (2) SPEEDLAYS, LADDERS THRU BODY, GENERATOR  
 FOR BRIDGEMATER FIRE DISTRICT #1  
 DRAWN BY MARTINSVILLE, NEW JERSEY  
 31588AD

REV	DATE	BY	CHK	VELOCITY FR	NO.
1	21AUG17	WF	CSH		
2	21AUG17	WF	CSH		
3	21AUG17	WF	CSH		

CHASSIS DATA				
WHEELS	16.00"	DTS	WF	CSH
AXLES	16.00"	DTS	WF	CSH
SPINDLES	16.00"	DTS	WF	CSH
WHEELS	16.00"	DTS	WF	CSH
AXLES	16.00"	DTS	WF	CSH
SPINDLES	16.00"	DTS	WF	CSH
WHEELS	16.00"	DTS	WF	CSH
AXLES	16.00"	DTS	WF	CSH
SPINDLES	16.00"	DTS	WF	CSH

**NOTE:**  
 DIMENSIONS SHOWN ARE APPROXIMATE AND ARE SUBJECT TO MINOR DEVIATIONS AS THEY OCCUR OR BE NECESSARY IN CONSTRUCTION.  
 MINOR DETAILS NOT SHOWN.  
 ALL DIMENSIONS ARE IN INCHES UNLESS OTHERWISE SPECIFIED.  
 DIMENSIONS IN PARENTHESIS ARE IN MILLIMETERS UNLESS OTHERWISE SPECIFIED.  
 DIMENSIONS IN PARENTHESIS ARE IN METERS UNLESS OTHERWISE SPECIFIED.  
 DIMENSIONS IN PARENTHESIS ARE IN FEET UNLESS OTHERWISE SPECIFIED.  
 DIMENSIONS IN PARENTHESIS ARE IN FEET AND INCHES UNLESS OTHERWISE SPECIFIED.  
 DIMENSIONS IN PARENTHESIS ARE IN FEET AND INCHES UNLESS OTHERWISE SPECIFIED.  
 DIMENSIONS IN PARENTHESIS ARE IN FEET AND INCHES UNLESS OTHERWISE SPECIFIED.