



Pierce Saber Pumper
Town of Belvidere/Good Will Fire Co. 1
Job #32814

FEATURES & SPECIFICATIONS

- Pierce Saber 60" Chassis with a 10" Raised Roof
- Cummins L9 380hp 2017 EPA compliant Engine
- Allison EVS3000P Automatic Transmission
- Dana Front and Rear Axles
- Waterous CS 1500 GPM Single Stage Pump
- 750 Gallon Poly Water Tank
- Delivered in February 2019



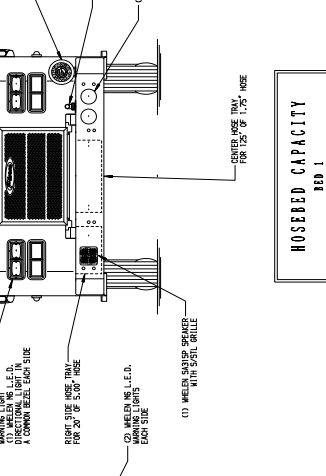
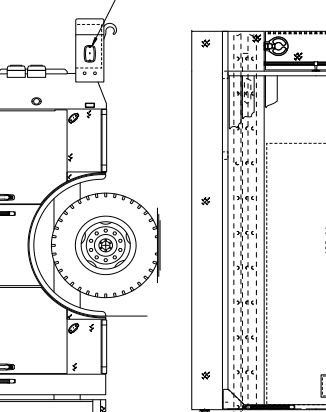
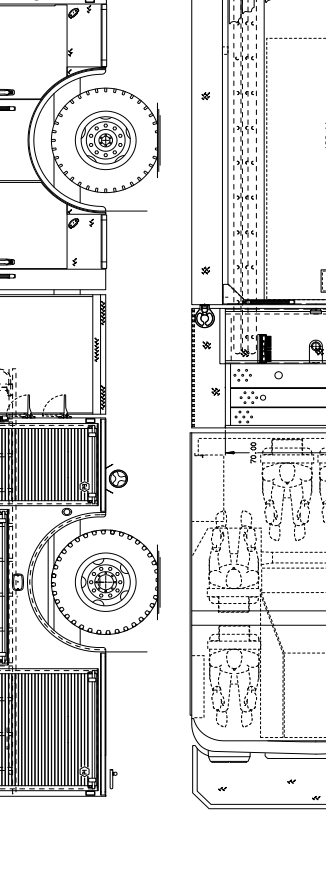
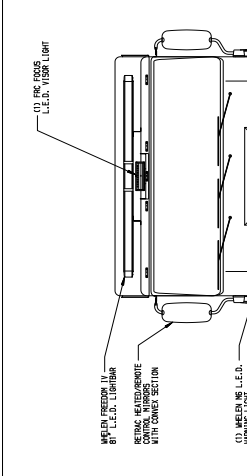
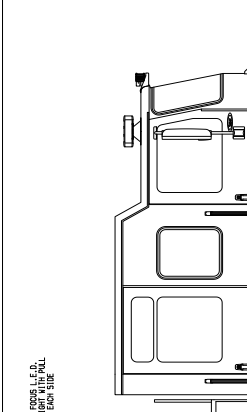
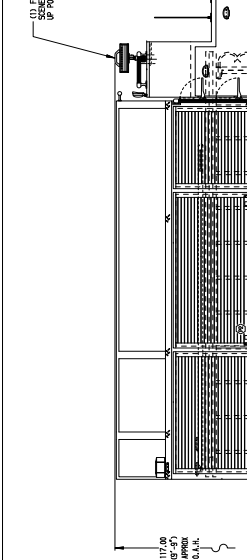
FIRE & SAFETY SERVICES, LTD.
South Plainfield, NJ
web: www.f-ss.com · phone: 800-400-8017

PUMPER
BODY
 Medium Aluminum 2nd Gen Pumper
CHASSIS
 Sabar FR Chassis

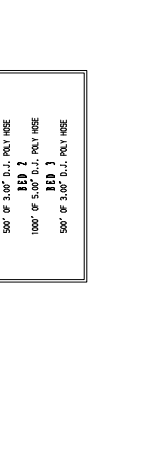
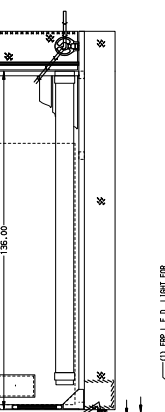
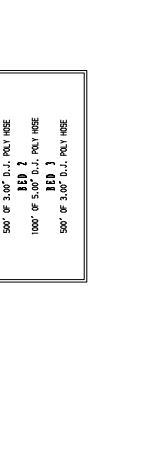
CHASSIS
 380 HP Cummins L9 Engine
TRANSMISSION
 Allison 5th Gen., 3000 EVS P
BUMPER
 27" Extended Painted Steel
CAB
 6010 Sabar FR Cab

WATER TANK
 750 Gallon Poly Motor Tank
COMP. PUMPER, REAR
 37.75" Roll-Up Rear Comp.
COMP. PUMPER, DRIVER SIDE
 152" Roll-Up Full Height Front & Rear
COMP. PUMPER PASS. SIDE
 152" Roll-Up Full Height Front & Rear FOLDER

FIRE SUPPRESSION
PUMPHOUSE
 48" Control Zone Side Mount
PUMP
 1250 GPM Metrosue GS
CROSSLAYS, 1.50"
 (2) 1.50" Standard Capacity
CROSSLAYS, 2.50"
 (1) 2.50" Standard Capacity
SPEEDLAYS
 Speedlays Not Required
GENERATOR
 Generator Not Required
Foam System
 Foam System Not Required
Foam Cell
 Foam Cell Not Required



HOSEBED CAPACITY
 BED 1
 500' OF 3.00" D.I.J. POLY HOSE
 1000' OF 3.00" D.I.J. POLY HOSE
 500' OF 3.00" D.I.J. POLY HOSE



MANUFACTURING INC.

Pierce Pumper Approval Drawing

Town of Belvidere

32814AD

CHASSIS DATA	TITLE	DATE
MAKE	Pierce	11.24
MODEL	FOR	22MAY18
REVISION	NO.	25MAY18
DATE	BY	DWG
DATE	BY	SUBER FRI

JOB NO.	32814
SCALE	DATE
11.24	22MAY18
DRAWN BY	CREATED BY
COL	KGO
CHECKED BY	SHEET NO.
25MAY18	1 OF 1

NOTE: DIMENSIONS SHOWN ARE APPROXIMATE AND ARE SUBJECT TO MINOR DEVIATIONS AS MAY OCCUR OR BE NECESSARY IN CONSTRUCTION. MINOR DETAILS NOT SHOWN.