



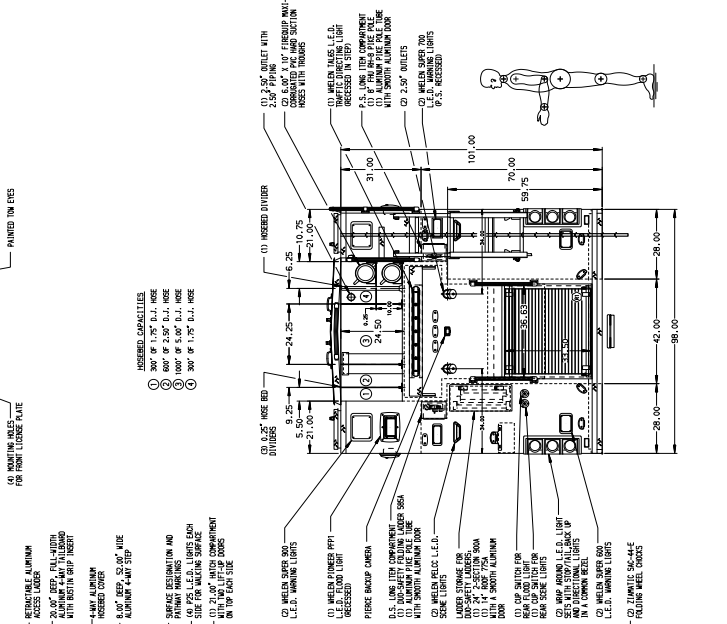
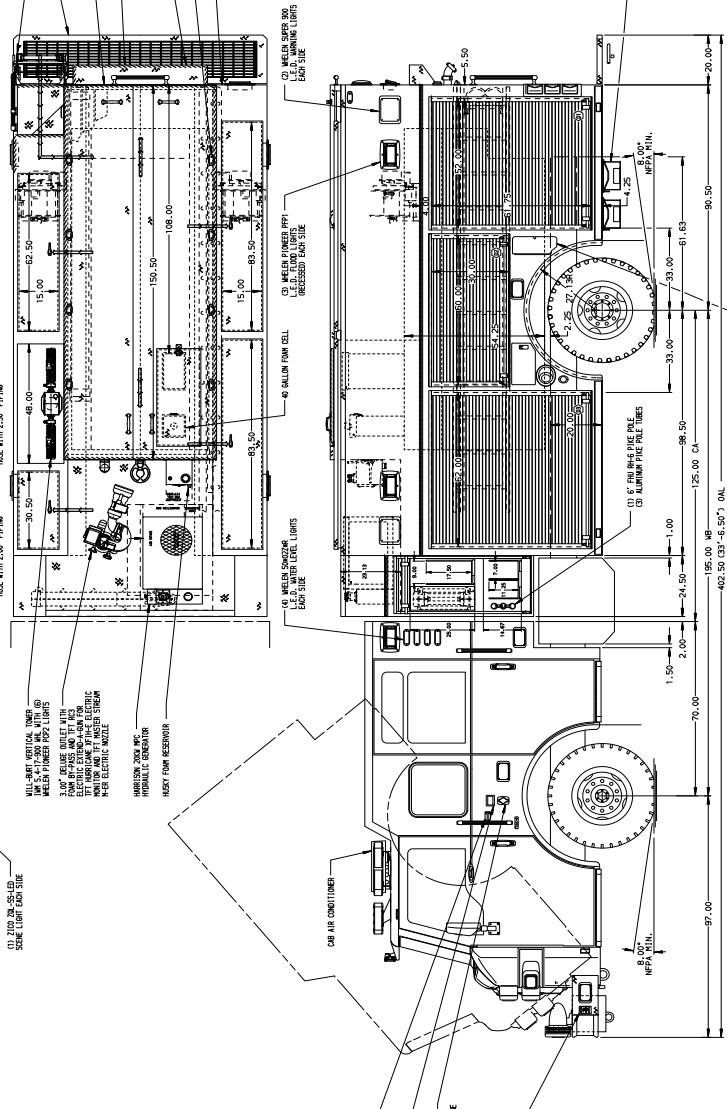
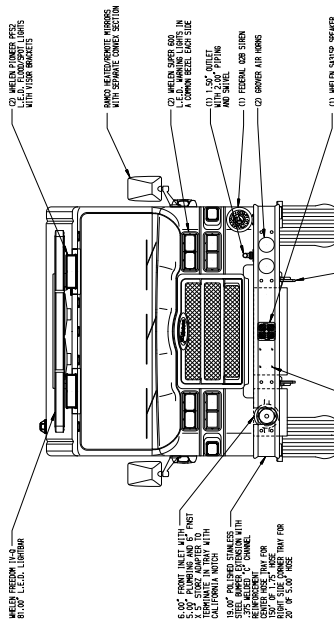
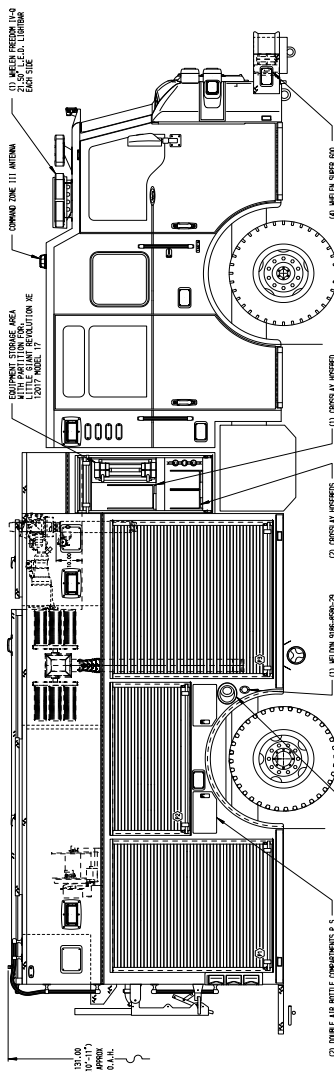
**Pierce Velocity FR PUC Pumper**  
Lower Twp. Fire Dist. 2/Town Bank Fire Co.  
Job #31178

**FEATURES & SPECIFICATIONS**

- Pierce Velocity FR 70" Chassis with a 10" Raised Roof
- Detroit Diesel DD13 505 hp 2016 EPA compliant Engine
- Allison EVS4000P Automatic Transmission
- Pierce PUC 1500 GPM Single Stage Pump
- TAK-4 Independent Front Suspension
- 1000 Gallon Poly Tank
- Husky 12 Foam System
- Harrison MPC 20kw Hydraulic Generator
- Delivered in January 2018



***FIRE & SAFETY SERVICES, LTD.***  
South Plainfield, NJ  
web: [www.f-ss.com](http://www.f-ss.com) · phone: 800-400-8017



- RESERVED CAPACITIES**
- ① 300" W 1.25" D.I. HOSE
  - ② 600" W 2.50" D.I. HOSE
  - ③ 1000" W 5.00" D.I. HOSE
  - ④ 300" W 1.25" D.I. HOSE

**Pierce** MANUFACTURING INC.

JOB NO.	31178
SCALE	1:24
DATE	
DRAWN BY	28APR17
ORDERED BY	28APR17
CHECKED BY	C5H
SHEET NO.	D
1 OF 2	

CHASSIS DATA	1500-D-1000P M40 GAL FOAM CELL, 189" RESCUE PUC
TITLE	(3) AXLES, LADDERS THRU BODY, DELUGE, GENERATOR
FOR	LOWER TOWNSHIP FIRE DISTRICT #2
VEHICLE	PIERCE
MODEL	
DATE	
VELOCITY	

DWG NO. 31178AD-SH1

**ALUMINUM BODY**

**SIDE ROLL AND FRONTAL IMPACT PROTECTION**

NOTE: 1. ALUMINUM DIMENSIONS SHOWN ARE APPROXIMATE AND ARE SUBJECT TO MINOR DEVIATIONS AS MAY OCCUR OR BE NECESSARY IN CONSTRUCTION. HINGR DETAILS NOT SHOWN.

2. DIMENSIONS SHOWN ARE APPROXIMATE AND ARE SUBJECT TO MINOR DEVIATIONS AS MAY OCCUR OR BE NECESSARY IN CONSTRUCTION.

3. ALL SHOWN DIMENSIONS ARE APPROXIMATE AND ARE SUBJECT TO MINOR DEVIATIONS AS MAY OCCUR OR BE NECESSARY IN CONSTRUCTION.

4. ALL SHOWN DIMENSIONS ARE APPROXIMATE AND ARE SUBJECT TO MINOR DEVIATIONS AS MAY OCCUR OR BE NECESSARY IN CONSTRUCTION.

5. ALL SHOWN DIMENSIONS ARE APPROXIMATE AND ARE SUBJECT TO MINOR DEVIATIONS AS MAY OCCUR OR BE NECESSARY IN CONSTRUCTION.