



Pierce Enforcer Pumper
City of Jersey City
Job #30309

FEATURES & SPECIFICATIONS

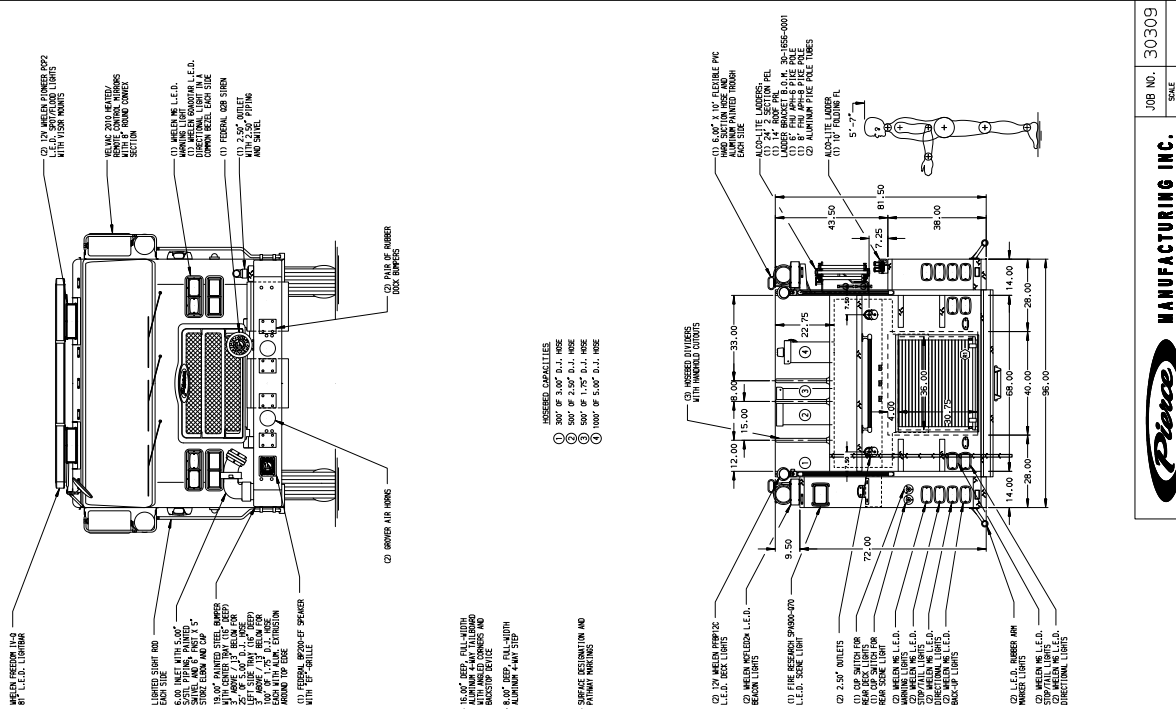
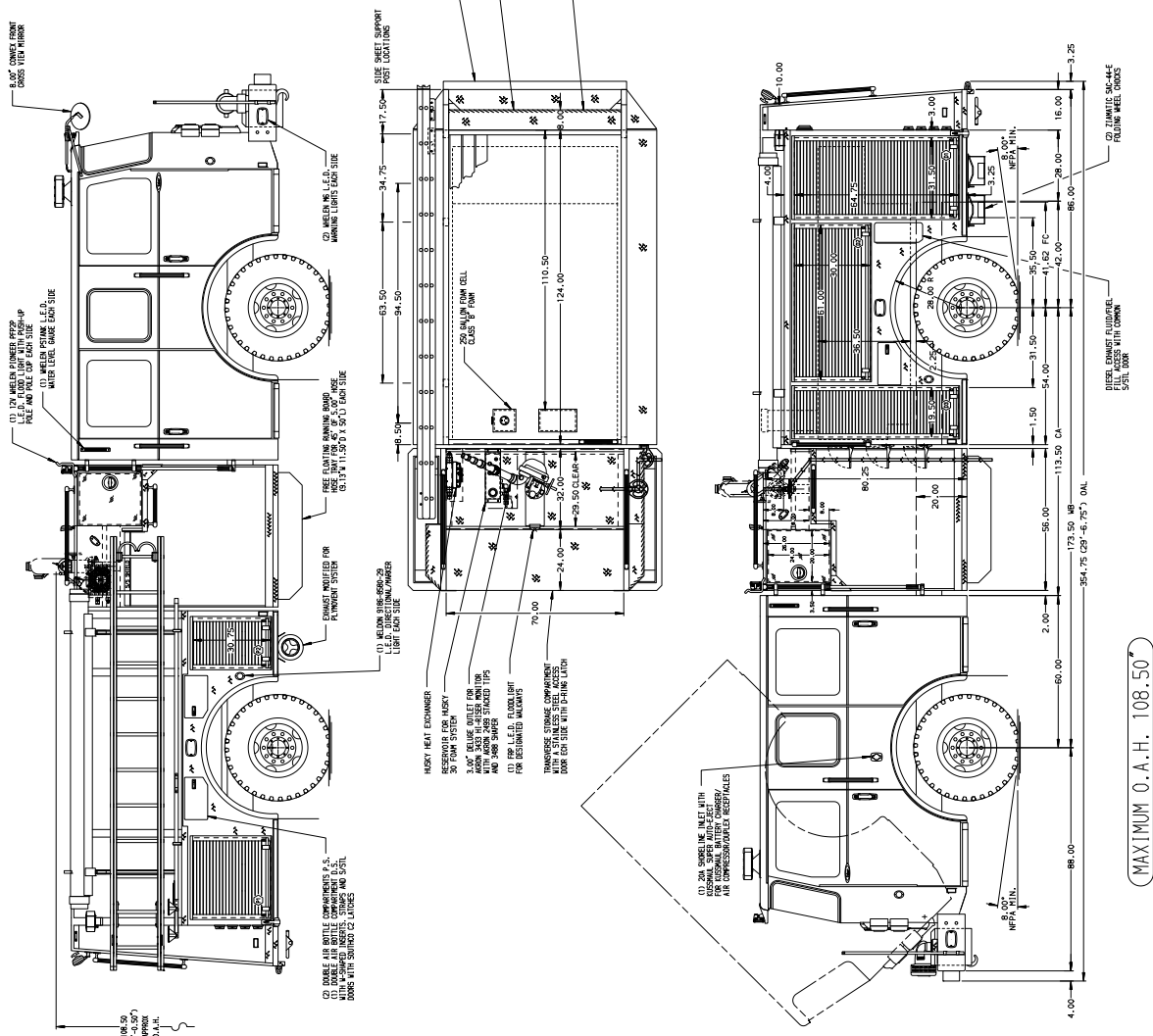
- Pierce Enforcer 60" Chassis with a Flat Roof
- Cummins ISL9 450 hp 2016 EPA compliant Engine
- Allison EVS3000P Automatic Transmission
- Hale QTWO 2000 GPM Two Stage Pump
- Husky 30 Single Agent Foam System
- Meritor Front and Rear Axles
- 500 Gallon Poly Tank
- Delivered in June 2017



FIRE & SAFETY SERVICES, LTD.

South Plainfield, NJ

web: www.f-ss.com · phone: 800-400-8017



- ASSEMBLY MATERIALS**
- (1) 500' OF 2.50\"/>
 - (2) 500' OF 1.75\"/>
 - (3) 1000' OF 5.00\"/>

30309	JOB NO.	30309
1:24	SCALE	1:24
13JUN16	DATE	13JUN16
CWH	DRAWN BY	NPA
CWH	DESIGNED BY	CWH
D	SHEET NO.	D
1 OF 1		1 OF 1
Pierce MANUFACTURING INC.		
2000-D-500P M/250 GAL FOAM CELL, 124" FH DS; LOW PS		
SIDE CONTROL, DELUGE, LADDERS ON SIDE, HUSKY 30		
CITY OF JERSEY CITY		
FOR JERSEY CITY, NEW JERSEY		
NO. 30309AD		

NOTE
 1. HOLE LINE SPECIFY HOLE FOR SWG SIZES
 2. BATTERY CHARGER INCL. WITH BATTERY LOCATED BEHIND DRIVER SEAT
 3. ALL DIMENSIONS UNLESS OTHERWISE SPECIFIED ARE IN INCHES
 4. DIMENSIONS IN PARENTHESIS ARE DIMENSIONS OF OTHER EQUIPMENT
 5. SOME PAINTED SURFACES MAY BE SUBJECT TO MINOR DEVIATIONS
 6. DIMENSIONS ARE TO CENTER UNLESS OTHERWISE SPECIFIED
 7. DIMENSIONS ARE TO FACE UNLESS OTHERWISE SPECIFIED
 8. ALL DIMENSIONS SHALL BE TO UNLESS OTHERWISE SPECIFIED
 9. ALL DIMENSIONS SHALL BE TO UNLESS OTHERWISE SPECIFIED
 10. ONE 1/4" 120V JERSEY RECEPTACLE BEHIND DRIVER'S SEAT IN IER CABINET
 MINOR DETAILS NOT SHOWN.

ALUMINUM BODY

MAXIMUM O.A.H. 108.50"

30309AD

MANUFACTURING INC.

2000-D-500P M/250 GAL FOAM CELL, 124" FH DS; LOW PS
 SIDE CONTROL, DELUGE, LADDERS ON SIDE, HUSKY 30
 CITY OF JERSEY CITY
 FOR JERSEY CITY, NEW JERSEY