



Pierce Arrow XT Pumper
Town of Secaucus
Job #29895

FEATURES & SPECIFICATIONS

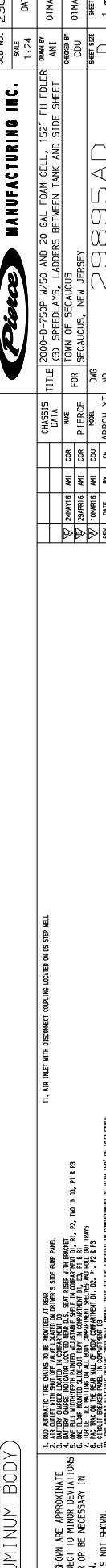
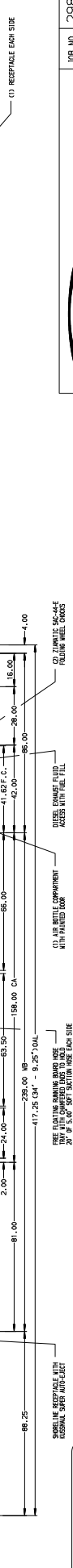
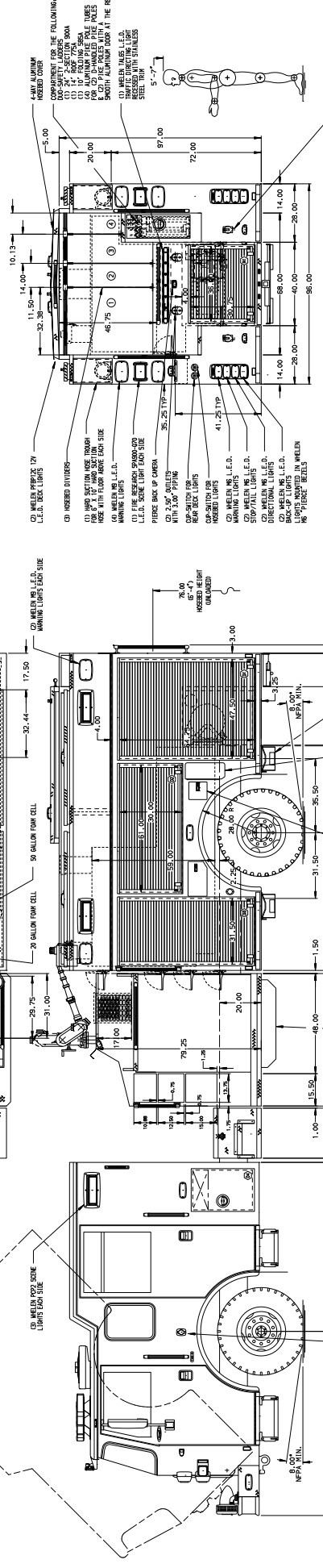
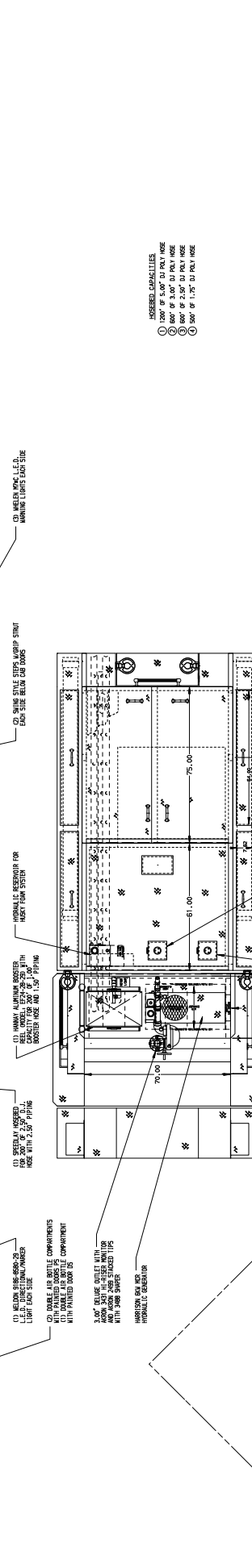
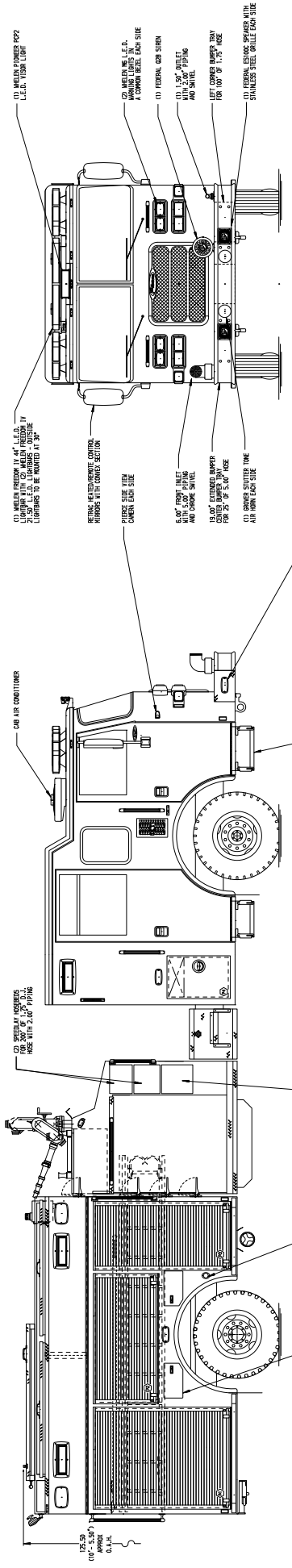
- Pierce Arrow XT 81" Chassis with a 10" Raised Roof
- Detroit Diesel DD13 505 hp 2016 EPA compliant Engine
- Allison EVS4000P Automatic Transmission
- Waterous CMU 2000 GPM Two Stage Pump
- Husky 12 Dual Agent Foam System
- TAK-4 Independent Front Suspension
- Harrison MCR 6kw Generator
- 750 Gallon Poly Tank
- Delivered in November 2016



FIRE & SAFETY SERVICES, LTD.

South Plainfield, NJ

web: www.f-ss.com · phone: 800-400-8017



Pierce MANUFACTURING INC.

JOB NO. 29895

SCALE 1:24

DATE 01MAR16

DRAWN BY AMI

CHECKED BY AMI

CREATED BY CDU

SHEET NO. 1 OF 1

CHASSIS DATA
 TITLE 2000-D-750P 1/50 AND 20 GAL FOAM CELL, 152" FH FOLDER
 FOR TONN OF SECALOUS
 DIM 2000-D-750P 1/50 FOR SECALOUS, NEW JERSEY
 DWG NO. 29895AD
 PART NO. 01MAR16

REV 1 DATE 01/27/15
 REV 2 DATE 01/27/15
 REV 3 DATE 01/27/15
 REV 4 DATE 01/27/15
 REV 5 DATE 01/27/15
 REV 6 DATE 01/27/15

REV 7 DATE 01/27/15
 REV 8 DATE 01/27/15
 REV 9 DATE 01/27/15
 REV 10 DATE 01/27/15

REV 11 DATE 01/27/15

REV 12 DATE 01/27/15

REV 13 DATE 01/27/15

REV 14 DATE 01/27/15

REV 15 DATE 01/27/15

ALUMINUM BODY

NOTE: 1. THE AUTOMATIC LINE CHAINS TO BE PROVIDED AT REAR
 2. BATTERY CHARGES TO BE PROVIDED IN COMPARTMENT AT REAR
 3. THE FULL WEIGHTS SHALL BE LISTED IN COMPARTMENT AT REAR
 4. THE FULL WEIGHTS SHALL BE LISTED IN COMPARTMENT AT REAR
 5. THE FULL WEIGHTS SHALL BE LISTED IN COMPARTMENT AT REAR
 6. THE FULL WEIGHTS SHALL BE LISTED IN COMPARTMENT AT REAR
 7. THE FULL WEIGHTS SHALL BE LISTED IN COMPARTMENT AT REAR
 8. THE FULL WEIGHTS SHALL BE LISTED IN COMPARTMENT AT REAR
 9. THE FULL WEIGHTS SHALL BE LISTED IN COMPARTMENT AT REAR
 10. THE FULL WEIGHTS SHALL BE LISTED IN COMPARTMENT AT REAR