



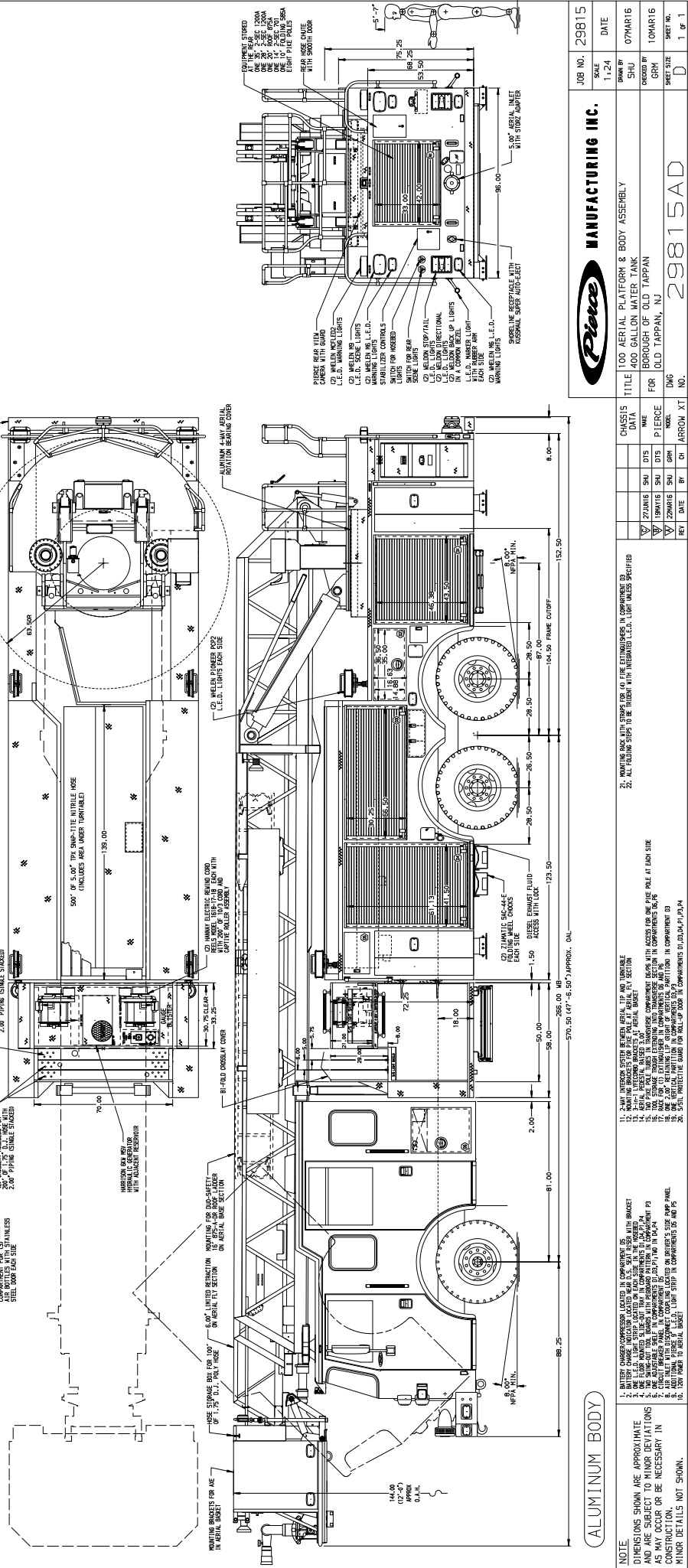
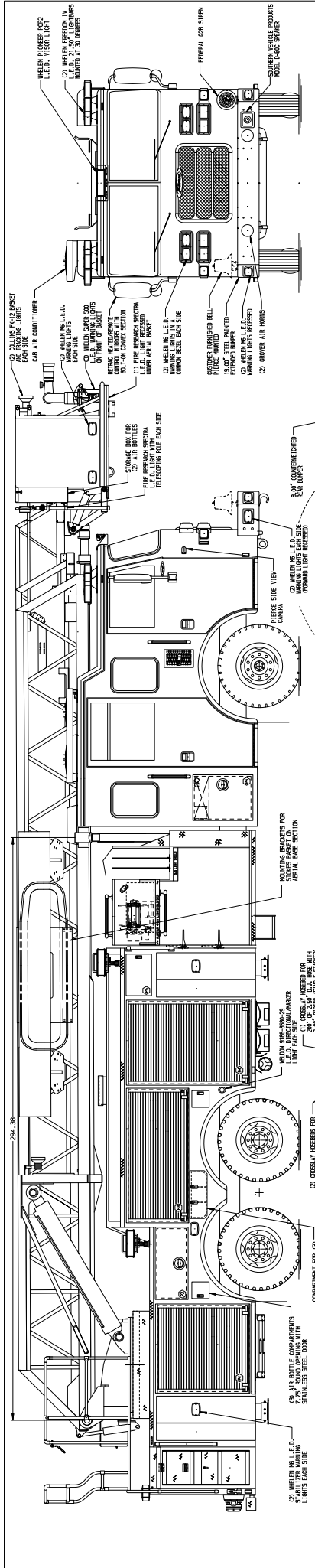
Pierce Arrow XT 100' Aerial Platform
Borough of Old Tappan
Job #29815

FEATURES & SPECIFICATIONS

- Pierce Arrow XT 81" Chassis with a 10" Notched Raised Roof
- Detroit Diesel DD13 505hp 2016 EPA compliant Engine
- Allison EVS4500P Automatic Transmission
- Waterous CSU 2000 GPM single stage pump
- 400 Gallon Water Tank
- Dana Front and Meritor Rear Axles
- Harrison MSV 6kw Generator
- Delivered in December 2016



FIRE & SAFETY SERVICES, LTD.
South Plainfield, NJ
web: www.f-ss.com · phone: 800-400-8017



MANUFACTURING INC.

JOB NO. 29815

SCALE 1:24

DATE

DRAWN BY SHU

CHECKED BY GRH

TITLE 100 AERIAL PLATFORM & BODY ASSEMBLY

400 GALLON WATER TANK

BOROUGH OF OLD TAPPAN

FOR OLD TAPPAN, NJ

DWG NO. 29815AD

SHEET NO. 1 OF 1

ALUMINUM BODY

1. BATTERY CHARGER COMPRESSOR LOCATED IN COMPARTMENT IS

2. ONE 1.75\"/>

3. ONE 1.75\"/>

4. ONE 1.75\"/>

5. ONE 1.75\"/>

6. ADDITIONAL FIVE 1.75\"/>

7. ONE 1\"/>

8. ADDITIONAL FIVE 1\"/>

9. ADDITIONAL FIVE 1\"/>

10. ONE 1\"/>

11. 2.00\"/>

12. 2.00\"/>

13. 2.00\"/>

14. 2.00\"/>

15. 2.00\"/>

16. 2.00\"/>

17. 2.00\"/>

18. 2.00\"/>

19. 2.00\"/>

20. 2.00\"/>

21. MOUNTING BRACKETS WITH STUMPS FOR 60 FIRE EXTINGUISHERS IN COMPARTMENT IS

22. ALL TUBING STOPS TO BE INSTALLED WITH INCLUSIVE U.C.A. LIGHT VALVES SPECIFIED

CHASSIS DATA

27 JUNIS SHU DTS

18 MARIS SHU DTS

22 MARIS SHU GRH

REC DATE BY CT ARRON XT