



Pierce Arrow XT Pumper  
Princeton, NJ  
Job #29580

FEATURES & SPECIFICATIONS

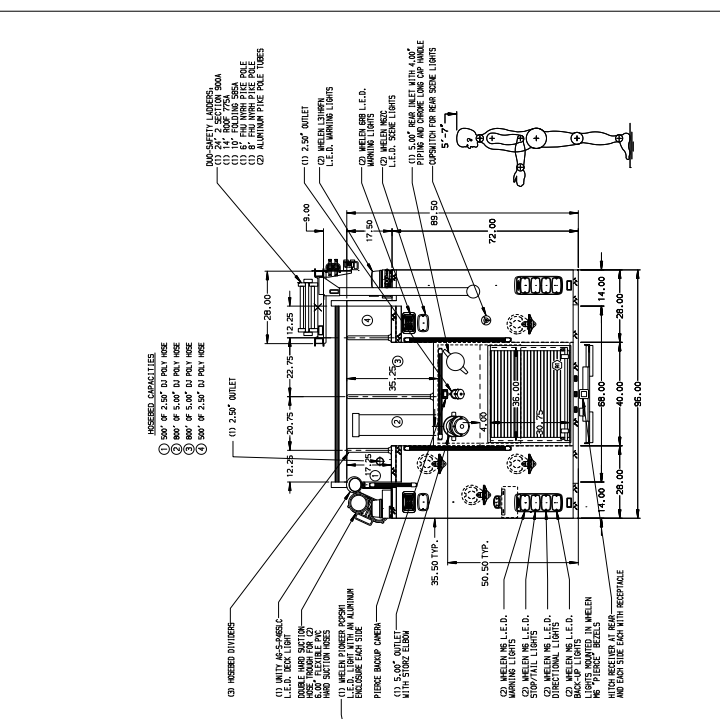
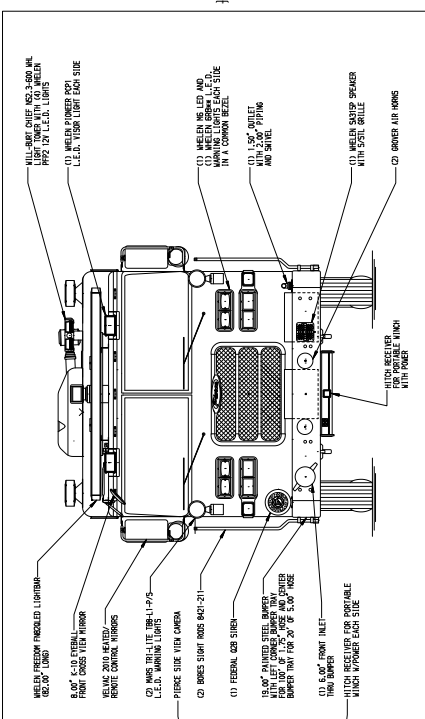
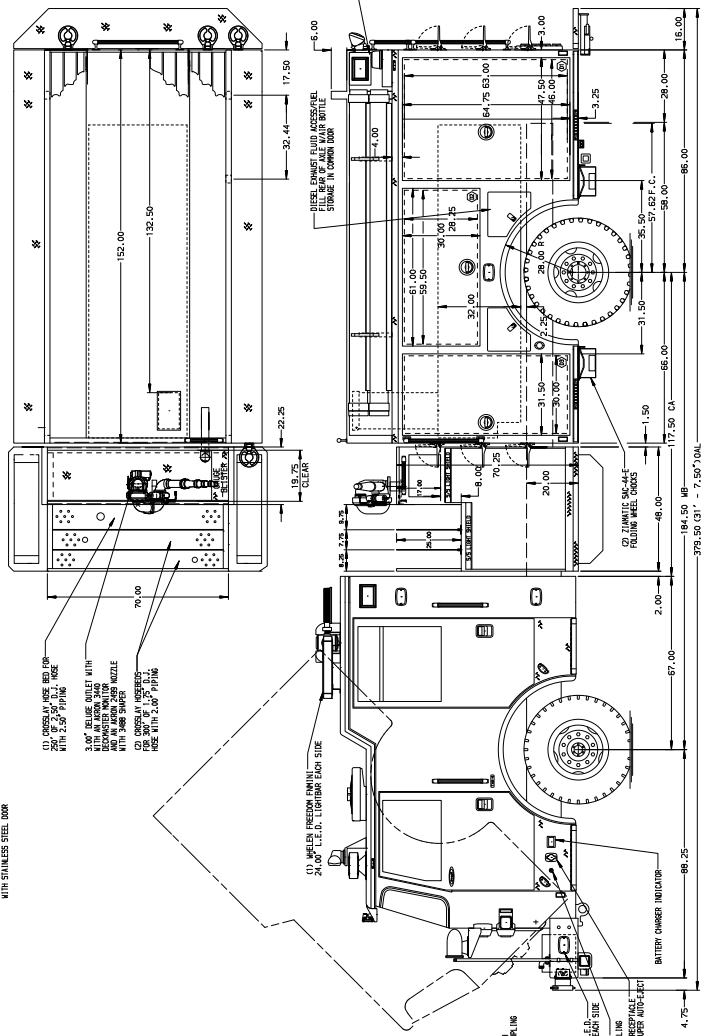
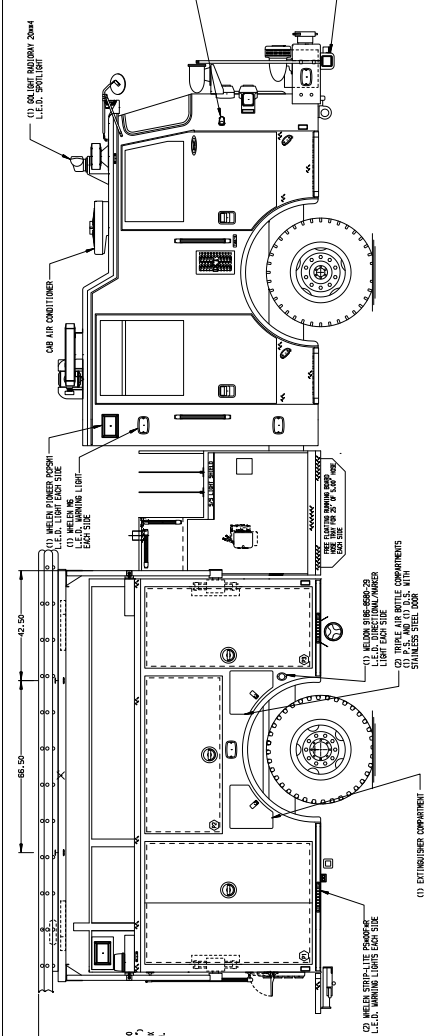
- Pierce Arrow XT 67" Chassis with a 10" Raised Roof
- Detroit Diesel DD13 450 hp 2013 EPA compliant Engine
- Allison EVS4000P Automatic Transmission
- Waterous CSU 2000 GPM Single Stage Pump
- TAK-4 Independent Front Suspension
- 500 Gallon Poly Tank
- Delivered in November 2016



***FIRE & SAFETY SERVICES, LTD.***

South Plainfield, NJ

web: [www.f-ss.com](http://www.f-ss.com) · phone: 800-400-8017



JOB NO. 29580		DATE	
SCALE	1:24	DRAWN BY	LST
TITLE		21DEC15	
2000-D-500 GAL. POLY, 152" FULL HEIGHT AND DEPTH		CREATED BY	
(3) X-LAYS, HYDRAULIC LADDER RACK, DELUGE		MGE	
BOROUGH OF PRINCETON FIRE DEPARTMENT		SHEET NO.	
FOR		21DEC15	
PRINCETON, NEW JERSEY		D	
DWG NO.		1 OF 1	
ARRON XT			

MANUFACTURING INC.		NO.	
29580AD			
TITLE		CHASSIS DATA	
(3) X-LAYS, HYDRAULIC LADDER RACK, DELUGE		2000-D-500 GAL. POLY, 152" FULL HEIGHT AND DEPTH	
FOR		BOROUGH OF PRINCETON FIRE DEPARTMENT	
PRINCETON, NEW JERSEY		DWG NO.	
ARRON XT			

NOTE:  
 1. BATTERY CHASSIS LOCATED IN B3  
 2. THIS INFO. IS SUBJECT TO CHANGE  
 3. DIMENSIONS SHOWN ARE APPROXIMATE  
 AND ARE SUBJECT TO MINOR DEVIATIONS  
 AS MAY OCCUR OR BE NECESSARY IN  
 CONSTRUCTION.  
 MINOR DETAILS NOT SHOWN.