



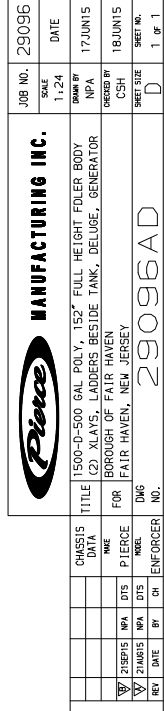
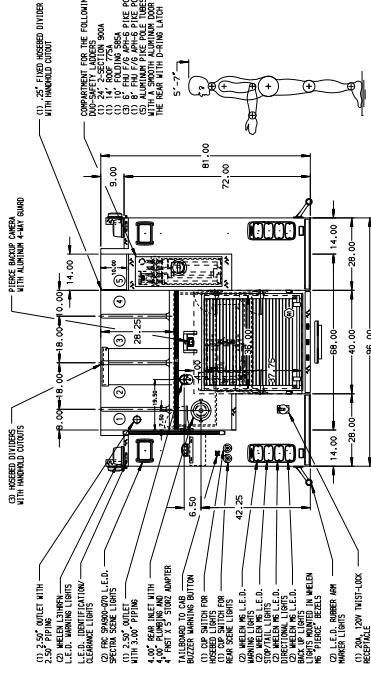
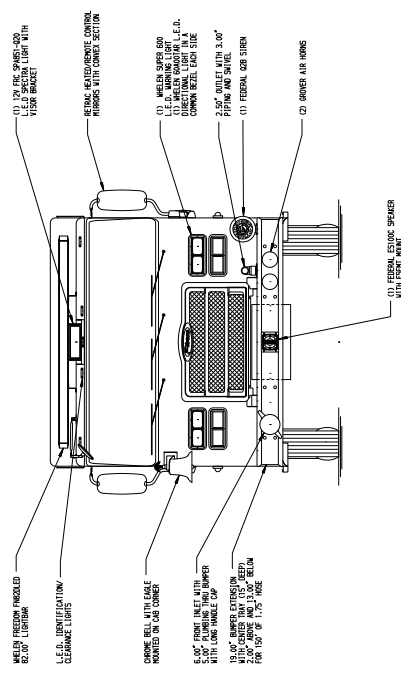
Pierce Enforcer Pumper  
Borough of Fair Haven  
Job #29096

FEATURES & SPECIFICATIONS

- Pierce Enforcer 70" Chassis with 10" Raised Roof
- Cummins ISL9 400 hp Engine
- Allison EVS3000 P Automatic Transmission
- Waterous CMU 1500 GPM Single Stage Pump
- 500 Gallon Poly Tank
- Delivered in March 2016



***FIRE & SAFETY SERVICES, LTD.***  
South Plainfield, NJ  
web: [www.f-ss.com](http://www.f-ss.com) · phone: 800-400-8017



ALUMINUM BODY

[illegible]