



Pierce Arrow XT Heavy Duty Non-Walkin Rescue
East Brunswick Fire District #3
Job #29082

FEATURES & SPECIFICATIONS

- Pierce Arrow XT 67" Chassis with 20" Raised Roof
- Cummins ISL9 400 hp Engine
- Allison EVS3000 P Automatic Transmission
- Meritor Front and Rear Axles
- Onan 35kW Generator
- Delivered in September 2016



FIRE & SAFETY SERVICES, LTD.

South Plainfield, NJ

web: www.f-ss.com · phone: 800-400-8017

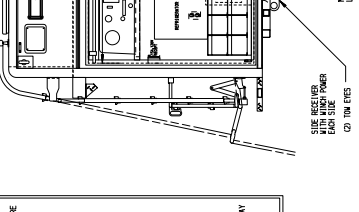
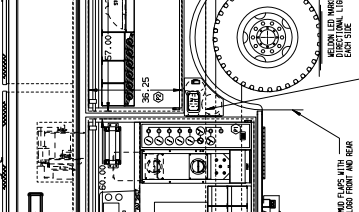
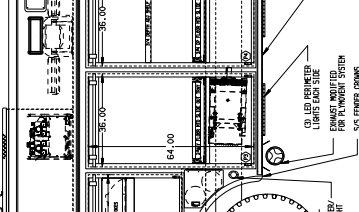
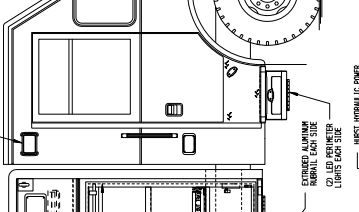
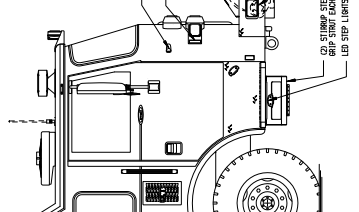
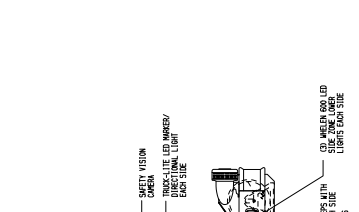
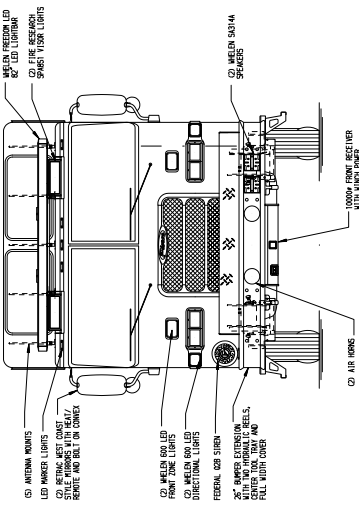
CHASSIS	HEAVY DUTY RESCUE
DATA	NON-WALKIN
MFG	FOR EAST BRUNSWICK FIRE DIST #3
PIERCE	CKK
MODEL	JOHN O'KEEFE
DWG NO.	29082AD
ANG720	

CLEAR HOOD WITH KEY	
APPROX. HOLE POS.	3-7/8"
APPROX. HOLE DIA.	3-1/2"
APPROX. HOLE CENTER TO CENTER	11-1/2"
APPROX. HOLE CENTER TO EDGE	1-1/2"
REV.	DATE
BY	CHK
DATE	
REV	DATE
BY	CHK
DATE	
REV	DATE
BY	CHK
DATE	
REV	DATE
BY	CHK
DATE	
REV	DATE
BY	CHK
DATE	

NOTE:
 DIMENSIONS SHOWN ARE APPROXIMATE AND ARE SUBJECT TO MINOR DEVIATIONS AS MAY OCCUR OR BE NECESSARY IN CONSTRUCTION.
 MINOR DETAILS NOT SHOWN.

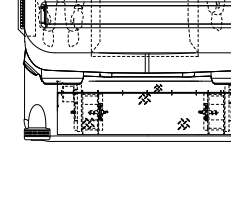
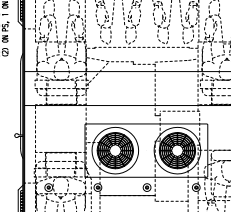
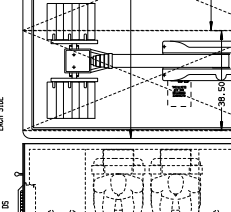
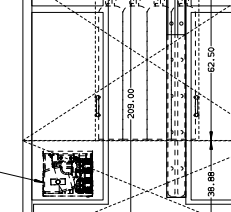
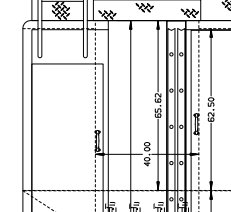
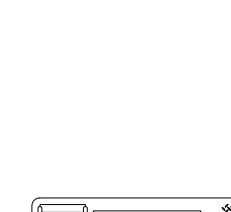
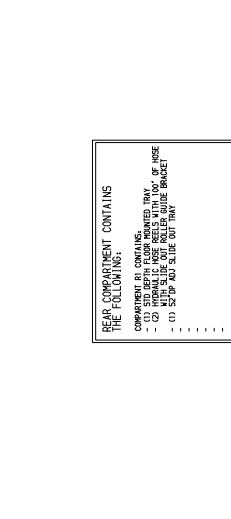
- DESIGN AUTOMATIC THE CHASSIS
- WOOD LED LIGHT STRIP ON FRONT BUMPERS
- WOOD LED LIGHT STRIP ON FRONT BUMPERS
- WOOD LED LIGHT STRIP ON FRONT BUMPERS
- WOOD LED LIGHT STRIP ON FRONT BUMPERS
- WOOD LED LIGHT STRIP ON FRONT BUMPERS
- WOOD LED LIGHT STRIP ON FRONT BUMPERS
- WOOD LED LIGHT STRIP ON FRONT BUMPERS
- WOOD LED LIGHT STRIP ON FRONT BUMPERS
- WOOD LED LIGHT STRIP ON FRONT BUMPERS

SIDE ROLL AND FRONTAL IMPACT PROTECTION



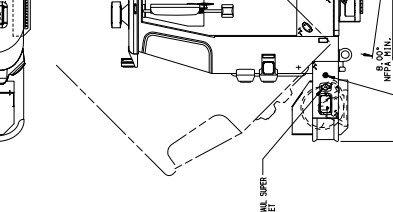
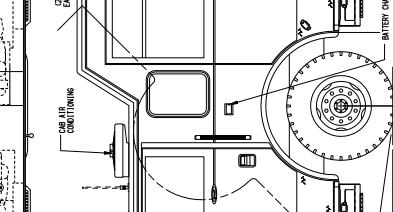
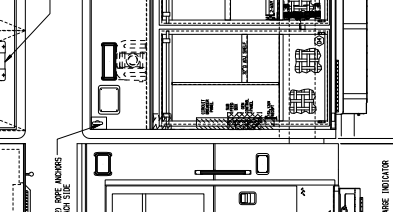
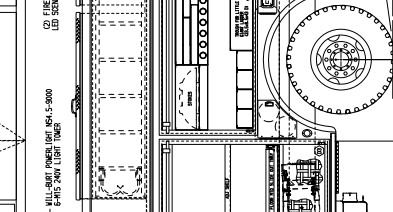
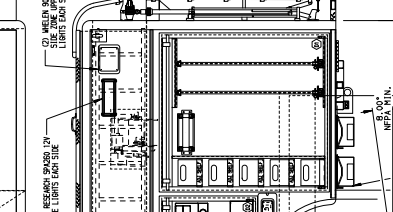
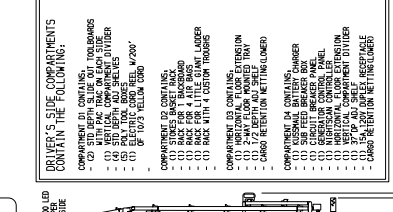
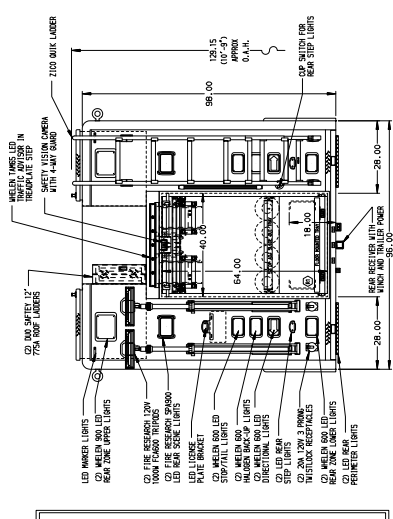
PASSENGER'S SIDE COMPARTMENTS CONTAIN THE FOLLOWING:

COMPARTMENT P1 CONTAINS:
 (1) SPACER/2 2" BATTLE TILL ENCLASURE
 (1) 2" BATTLE TILL ENCLASURE
 (1) 3" BATTLE TILL ENCLASURE
 (1) 4" BATTLE TILL ENCLASURE
 (1) 5" BATTLE TILL ENCLASURE
 (1) 6" BATTLE TILL ENCLASURE
 (1) 7" BATTLE TILL ENCLASURE
 (1) 8" BATTLE TILL ENCLASURE
 (1) 9" BATTLE TILL ENCLASURE
 (1) 10" BATTLE TILL ENCLASURE
 (1) 11" BATTLE TILL ENCLASURE
 (1) 12" BATTLE TILL ENCLASURE
 (1) 13" BATTLE TILL ENCLASURE
 (1) 14" BATTLE TILL ENCLASURE
 (1) 15" BATTLE TILL ENCLASURE
 (1) 16" BATTLE TILL ENCLASURE
 (1) 17" BATTLE TILL ENCLASURE
 (1) 18" BATTLE TILL ENCLASURE
 (1) 19" BATTLE TILL ENCLASURE
 (1) 20" BATTLE TILL ENCLASURE



REAR COMPARTMENT CONTAINS THE FOLLOWING:

COMPARTMENT R1 CONTAINS:
 (1) 2" BATTLE TILL ENCLASURE
 (1) 3" BATTLE TILL ENCLASURE
 (1) 4" BATTLE TILL ENCLASURE
 (1) 5" BATTLE TILL ENCLASURE
 (1) 6" BATTLE TILL ENCLASURE
 (1) 7" BATTLE TILL ENCLASURE
 (1) 8" BATTLE TILL ENCLASURE
 (1) 9" BATTLE TILL ENCLASURE
 (1) 10" BATTLE TILL ENCLASURE
 (1) 11" BATTLE TILL ENCLASURE
 (1) 12" BATTLE TILL ENCLASURE
 (1) 13" BATTLE TILL ENCLASURE
 (1) 14" BATTLE TILL ENCLASURE
 (1) 15" BATTLE TILL ENCLASURE
 (1) 16" BATTLE TILL ENCLASURE
 (1) 17" BATTLE TILL ENCLASURE
 (1) 18" BATTLE TILL ENCLASURE
 (1) 19" BATTLE TILL ENCLASURE
 (1) 20" BATTLE TILL ENCLASURE



DRIVER'S SIDE COMPARTMENTS CONTAIN THE FOLLOWING:

COMPARTMENT D1 CONTAINS:
 (1) SPACER/2 2" BATTLE TILL ENCLASURE
 (1) 2" BATTLE TILL ENCLASURE
 (1) 3" BATTLE TILL ENCLASURE
 (1) 4" BATTLE TILL ENCLASURE
 (1) 5" BATTLE TILL ENCLASURE
 (1) 6" BATTLE TILL ENCLASURE
 (1) 7" BATTLE TILL ENCLASURE
 (1) 8" BATTLE TILL ENCLASURE
 (1) 9" BATTLE TILL ENCLASURE
 (1) 10" BATTLE TILL ENCLASURE
 (1) 11" BATTLE TILL ENCLASURE
 (1) 12" BATTLE TILL ENCLASURE
 (1) 13" BATTLE TILL ENCLASURE
 (1) 14" BATTLE TILL ENCLASURE
 (1) 15" BATTLE TILL ENCLASURE
 (1) 16" BATTLE TILL ENCLASURE
 (1) 17" BATTLE TILL ENCLASURE
 (1) 18" BATTLE TILL ENCLASURE
 (1) 19" BATTLE TILL ENCLASURE
 (1) 20" BATTLE TILL ENCLASURE